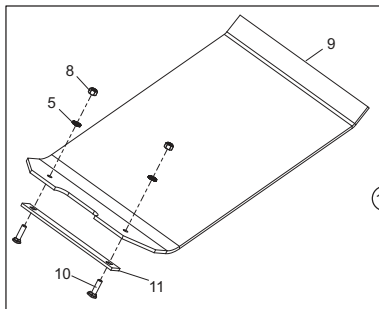
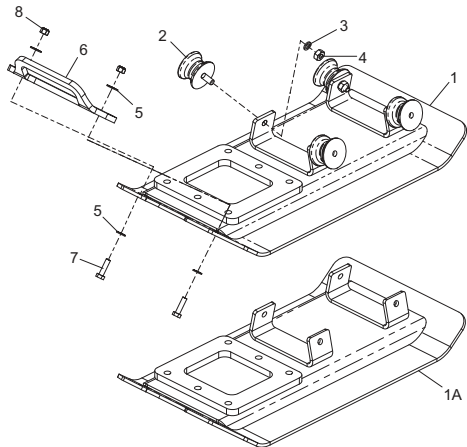
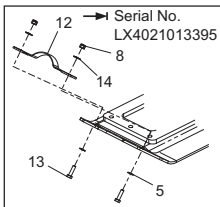


15

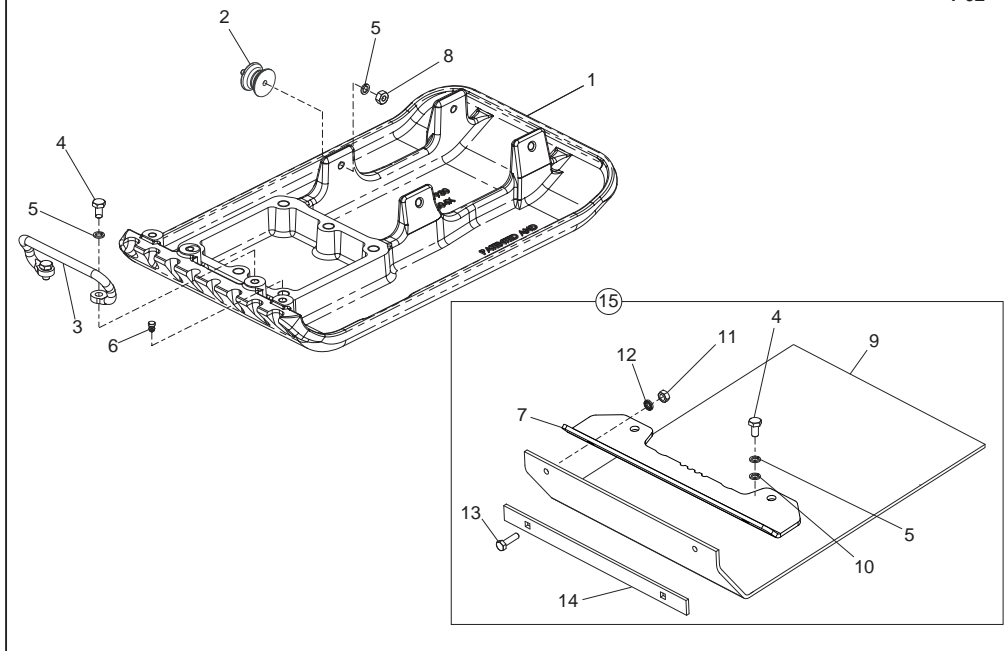
Baseplate Assembly, Plaque d'embase, Cto. Placa base, Conj. da Placa de Base

1	943/15800	Baseplate	Plaque d'embase	Placa de base	Placa de Base	PCLX 320	1
1	943/13700	Baseplate	Plaque d'embase	Placa de base	Placa de Base	PCLX 320S	1
1	943/15900	Baseplate	Plaque d'embase	Placa de base	Placa de Base	PCLX 400	1
1A	943/15800	Baseplate	Plaque d'embase	Placa de base	Placa de Base	PCLX 320 Asphalt	1
1A	943/15900	Baseplate	Plaque d'embase	Placa de base	Placa de Base	PCLX 400 Asphalt	1
2	21.0.292	Anti-Vibration Mount	Tampon antivibratoire	Montura antivibratoria	Bloco Anti-vibração		4
3	4/1003	Washer	Rondelle	Arandela	Anilha	M10	4
4	8/10003	Nut	Ecrou	Tuerca	Porca	M10	4
5	4/8006	Washer	Rondelle	Arandela	Anilha	M8	6
6	943/99938	Handle	Guidon	Manillar	Punho		1
7	7/8009	Screw	Vis	Tornillo	Parafuse	M8 x 30	2
8	8/8008	Nut	Ecrou	Tuerca	Porca	M8	4
9	943/99906	Paving Pad	Tampon de Pavage	Tampón de Pavimentación	Bloco de Pavimentação	PCLX 320	1
9	943/99905	Paving Pad	Tampon de Pavage	Tampón de Pavimentación	Bloco de Pavimentação	PCLX 400	1
10	00.0.862	Bolt	Boulon	Perno	Perno	M8 x 50	2
11	943/99907	Clamp Strip	Barrette de blocage	Barra de fijación	Tira de Grampeamento	PCLX 320	1
11	943/99908	Clamp Strip	Barrette de blocage	Barra de fijación	Tira de Grampeamento	PCLX 400	1
12	943/99928	Strap	Courroie	Correa	Cinta		1
13	7/8007	Screw	Vis	Tornillo	Parafuse	M8 x 35	2
14	05.3.062	Washer	Rondelle	Arandela	Anilha		2
15	OPP/01/DIO	Paving Pad	Tampon de Pavage	Tampón de Pavimentación	Bloco de Pavimentação	PCL / PCLX 320	1
15	OPP/25/DIO	Paving Pad	Tampon de Pavage	Tampón de Pavimentación	Bloco de Pavimentação	PCL / PCLX 320S	1
15	OPP/02/DIO	Paving Pad	Tampon de Pavage	Tampón de Pavimentación	Bloco de Pavimentação	PCL / PCLX 400	1



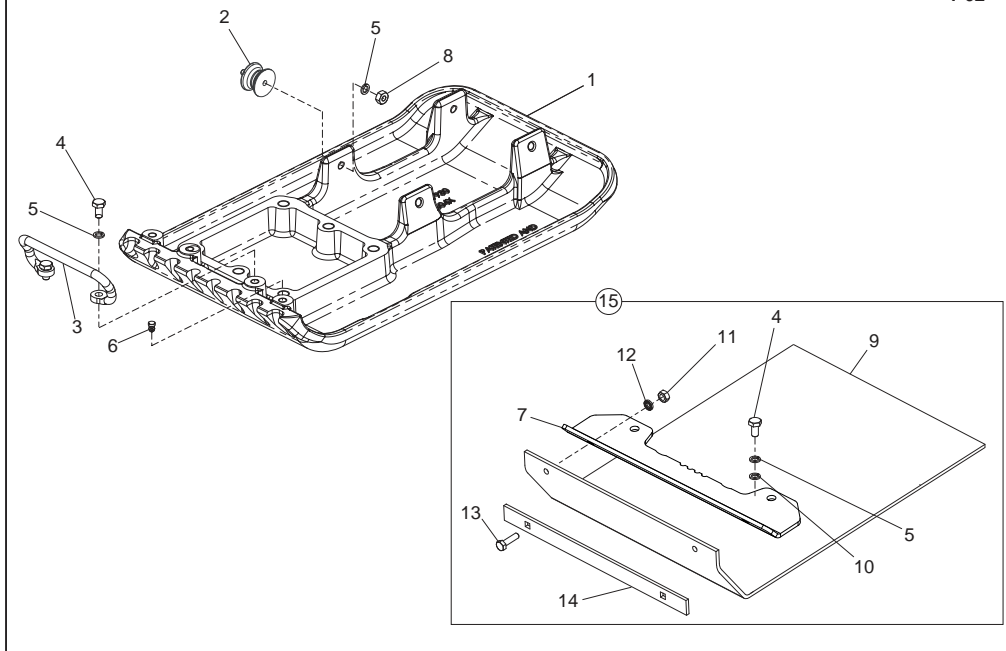
Vloerplaat, Rüttelplatten-Zsb., Bundplade, Gruppo piastra di base

1	943/15800	Vloerplaat	Rüttelplatten	Bundplade	Piastra di Base	PCLX 320	1
1	943/13700	Vloerplaat	Rüttelplatten	Bundplade	Piastra di Base	PCLX 320S	1
1	943/15900	Vloerplaat	Rüttelplatten	Bundplade	Piastra di Base	PCLX 400	1
1A	943/15800	Vloerplaat	Rüttelplatten	Bundplade	Piastra di Base	PCLX 320 Asphalt	1
1A	943/15900	Vloerplaat	Rüttelplatten	Bundplade	Piastra di Base	PCLX 400 Asphalt	1
2	21.0.292	Anti-trilbevestiging	Schwingungsdämpfer	Antivibrationsophæng	Supporto antivibrazioni		4
3	4/1003	Afdichting	Scheibe	Spændeskive	Rondella	M10	4
4	8/10003	Moer	Mutter	Møtrik	Dado	M10	4
5	4/8006	Afdichting	Scheibe	Spændeskive	Rondella	M8	6
6	943/99938	Handle	Guidon	Manillar	Punho		1
7	7/8009	Schroef	Schraube	Skrue	Vite	M8 x 30	2
8	8/8008	Moer	Mutter	Møtrik	Dado	M8	4
9	943/99906	Kunststof onderplaat	Blockplasterrüttler	Belægningsklods	Pavimentazione a Blocchi	PCLX 320	1
9	943/99905	Kunststof onderplaat	Blockplasterrüttler	Belægningsklods	Pavimentazione a Blocchi	PCLX 400	1
10	00.0.862	Bouten	Bolzen	Skruebolt	Bullone	M8 x 50	2
11	943/99907	Clamp Strip	Barrette de blocage	Barra de fijación	Tira de Grampeamento	PCLX 320	1
11	943/99908	Clamp Strip	Barrette de blocage	Barra de fijación	Tira de Grampeamento	PCLX 400	1
12	943/99928	De Riem	Strap	Remmen	Cinghia		1
13	7/8007	Schroef	Schraube	Skrue	Vite	M8 x 35	2
14	05.3.062	Afdichting	Scheibe	Spændeskive	Rondella		2
15	OPP/01/DIO	Kunststof onderplaat	Blockplasterrüttler	Belægningsklods	Pavimentazione a Blocchi	PCL / PCLX 320	1
15	OPP/25/DIO	Kunststof onderplaat	Blockplasterrüttler	Belægningsklods	Pavimentazione a Blocchi	PCL / PCLX 320S	1
15	OPP/02/DIO	Kunststof onderplaat	Blockplasterrüttler	Belægningsklods	Pavimentazione a Blocchi	PCL / PCLX 400	1



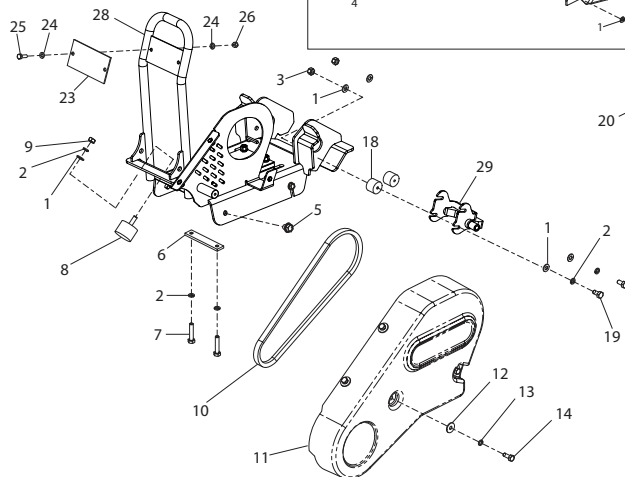
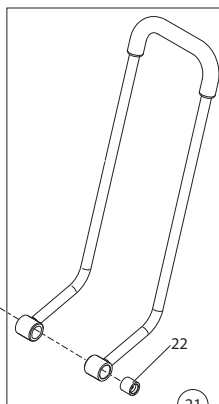
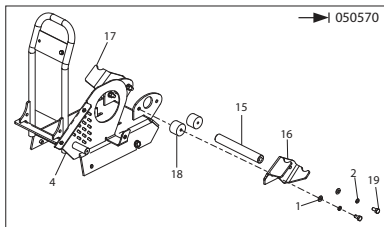
**Cast Baseplate Assembly, Elements du patin moulé,
Montaje de plancha base de fundición, Conjunto da placa base fundida**

1	943/99930	Baseplate	Plaqué d'embase	Placa de base	Placa de Base	PCLX 320	1
1	943/99932	Baseplate	Plaqué d'embase	Placa de base	Placa de Base	PCLX 400	1
2	21.0.292	Anti-Vibration Mount	Tampon antivibratoire	Montura antivibratoria	Bloco Anti-vibração	UK	4
2A	21.0.298	Anti-Vibration Mount	Tampon antivibratoire	Montura antivibratoria	Bloco Anti-vibração	Export	4
3	151/99915	Handle	Guidon	Manillar	Punho		1
4	7/10004	Screw	Vis	Tornillo	Parafuse	M10 x 20	4
5	4/1003	Washer	Rondelle	Arandela	Anilha	M10	4
6	3/4037	Plug	Bougie	Tapón	Bujão		2
7	943/15400	Bracket	Patte de Montage	Escuadra	Suporte	PCLX 320 / 320S	1
7A	943/15500	Bracket	Patte de Montage	Escuadra	Suporte	PCLX400	1
8	8/10003	Nut	Ecrou	Tuerca	Porca	M10	4
9	943/99906	Paving Pad	Tampon de Pavage	Tampón de Pavimentación	Bloco de Pavimentação	PCLX 320 / 320S	1
9A	943/99905	Paving Pad	Tampon de Pavage	Tampón de Pavimentación	Bloco de Pavimentação	PCLX 400	1
10	4/1005	Washer	Rondelle	Arandela	Anilha	M10	2
11	8/8008	Nut	Ecrou	Tuerca	Porca	M8	2
12	4/8006	Washer	Rondelle	Arandela	Anilha	M8	2
13	00.0.860	Screw	Vis	Tornillo	Parafuse	M8 x 30	2
14	943/99907	Clamp Strip	Barrette de blocage	Barra de fijación	Tira de Grampeamento	PCLX 320 / 320S	1
14A	943/99908	Clamp Strip	Barrette de blocage	Barra de fijación	Tira de Grampeamento	PCLX 400	1
15	OPP/01/DIO	Paving Pad	Tampon de Pavage	Tampón de Pavimentación	Bloco de Pavimentação	PCL / PCLX 320	1
15A	OPP/02/DIO	Paving Pad	Tampon de Pavage	Tampón de Pavimentación	Bloco de Pavimentação	PCL / PCLX 400	1



**Gegoten grondplaatassemblage, Gussplatte Zsb.,
Støbt fundament, Assemblaggio della forma della piastra di base**

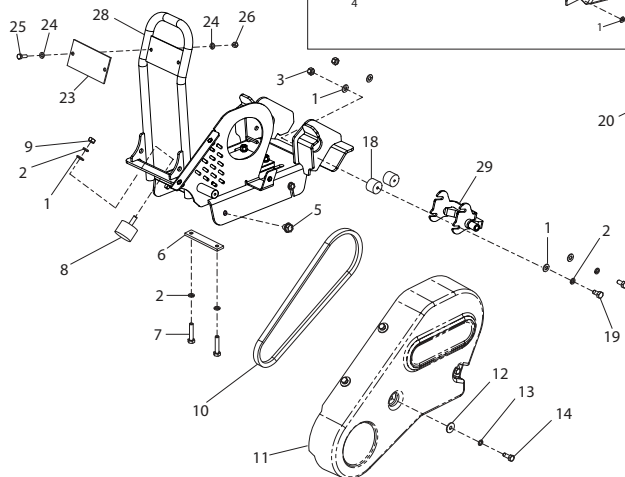
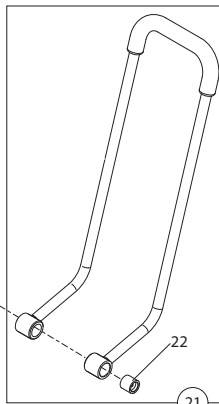
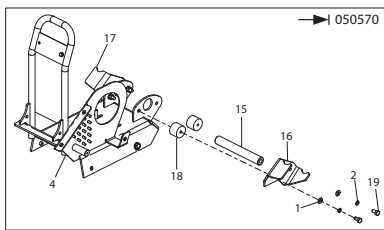
1	943/99930	Vloerplaat	Rüttelplatten	Bundplade	Piastra di Base	PCLX 320	1
1	943/99932	Vloerplaat	Rüttelplatten	Bundplade	Piastra di Base	PCLX 400	1
2	21.0.292	Anti-trilbevestiging	Schwingungsdämpfer	Antivibrationsophæng	Supporto antivibrazioni	UK	4
2	21.0.298	Anti-trilbevestiging	Schwingungsdämpfer	Antivibrationsophæng	Supporto antivibrazioni	Export	4
3	151/99915	Hendel	Griff	Håndtag	Impugnatura	1
4	7/10004	Schroef	Schraube	Skruer	Vite	M10 x 20	4
5	4/1003	Afdichtring	Scheibe	Spændeskive	Rondella	M10	4
6	3/4037	Plug	Verschlusschraube	Prop	Candela	2
7	943/15400	Steun	Halterung	Beslag	Staffa	PCLX 320 / 320S	1
7	943/15500	Steun	Halterung	Beslag	Staffa	PCLX400	1
8	8/10003	Moer	Mutter	Møtrik	Dado	M10	4
9	943/99906	Kunststof onderplaat	Blockplasterrüttler	Belægningklods	Pavimentazione a Blocchi	PCLX 320 / 320S	1
9	943/99905	Kunststof onderplaat	Blockplasterrüttler	Belægningklods	Pavimentazione a Blocchi	PCLX 400	1
10	4/1005	Afdichtring	Scheibe	Spændeskive	Rondella	M10	2
11	8/8008	Moer	Mutter	Møtrik	Dado	M8	2
12	4/8006	Afdichtring	Scheibe	Spændeskive	Rondella	M8	2
13	00.0.860	Schroef	Schraube	Skruer	Vite	M8 x 30	2
14	943/99907	Klemstrook	Sicherungsschleiste	Klemmestrimmel	Fascetta di Bloccaggio	PCLX 320 / 320S	1
14	943/99908	Klemstrook	Sicherungsschleiste	Klemmestrimmel	Fascetta di Bloccaggio	PCLX 400	1
15	OPP/01/DIO	Kunststof onderplaat	Blockplasterrüttler	Belægningklods	Pavimentazione a Blocchi	PCL / PCLX 320	1
15	OPP/02/DIO	Kunststof onderplaat	Blockplasterrüttler	Belægningklods	Pavimentazione a Blocchi	PCL / PCLX 400	1



**Bedplate and Front Cover (UK), Plaque d'assise et Capot Avant (UK),
Bancada y Cubierta delantera (UK), Placa de Apoio e Tampa Frontal (UK)**

101216

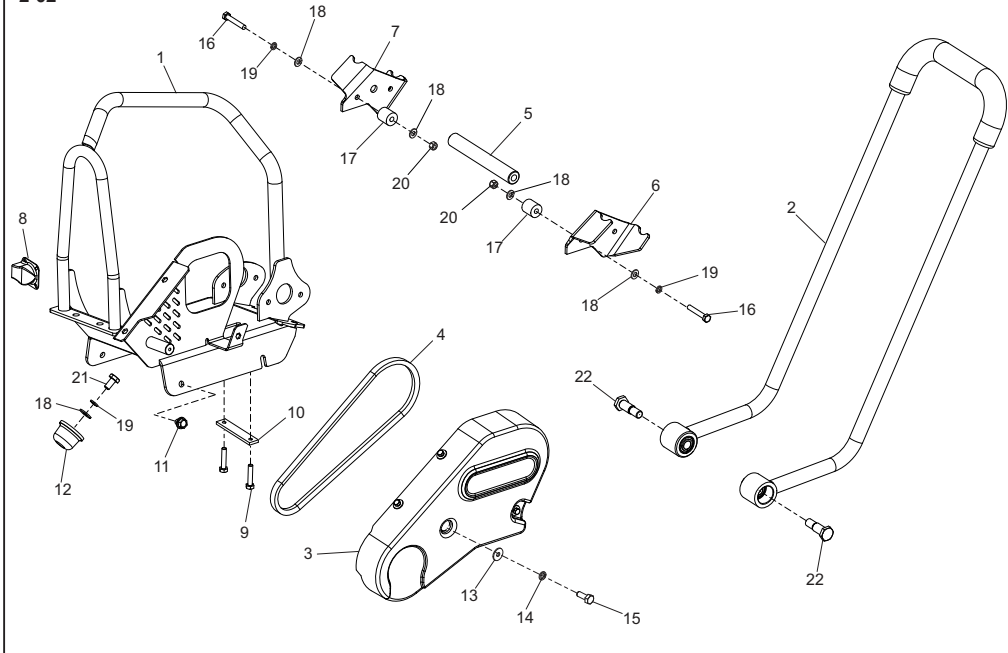
1	4/8003.....Washer	Rondelle	Arandela	Anilha	M8	6
2	4/8006.....Washer	Rondelle	Arandela	Anilha	M8	6
3	8/8008.....Nut	Ecrou	Tuerca	Porca	M8	4
4	27.....Bedplate	Plaque d'assise	Bancada	Placa de Apoio		1
5	7/10025.....Screw	Vis	Tornillo	Parafuse	M10 x 12	4
6	151.0.161.....Engine Clamp	Plaque de Serrage de Motor	Placa - Fijación motor	Placa de Base		1
7	7/8047.....Screw	Vis	Tornillo	Parafuse	M8 x 40	2
8	21/0162.....Anti-Vibration Mount	Tampon antivibratoire	Montura antivibratoria	Bloco Anti-vibração	M8 x 60	1
9	8/8001.....Nut	Ecrou	Tuerca	Porca	M8	1
10	21/0158.....Belt	Courroie	Correa	Cinta		1
11	943/99917S.....Belt Guard - Orange	Capot de courroie - Orange	Protector de la correa - Naranja	Guarda da Cinta - Laranja		1
11	943/99917B.....Belt Guard - Blue	Capot de courroie - Bleu	Protector de la correa - Azul	Guarda da Cinta - Azul		1
11	943/99917G.....Belt Guard - Green	Capot de courroie - Vert	Protector de la correa - Verde	Guarda da Cinta - Verde		1
11	943/99917R.....Belt Guard - Red	Capot de courroie - Rouge	Protector de la correa - Roja	Guarda da Cinta - Vermelho		1
11	943/99917Y.....Belt Guard - Yellow	Capot de courroie - Jaune	Protector de la correa - Amarillo	Guarda da Cinta - Amarelo		1
11	943/99917W.....Belt Guard - White	Capot de courroie - Blanc	Protector de la correa - Blanco	Guarda da Cinta - Branco		1
12	05.3.066.....Washer	Rondelle	Arandela	Anilha	1/4" x 3/4"	4
13	4/6005.....Washer	Rondelle	Arandela	Anilha	M6	4
14	02.0.012.....Screw	Vis	Tornillo	Parafuse	M6 x 16	4
15	943/99918.....Strut	Béquille	Puntal	Apoio	M6	1
16	943/14500.....Plate Kit	Ensemble de Plaque	Conjunto de Placa	Conjunto da Placa		1
17	943/14500.....Plate Kit	Ensemble de Plaque	Conjunto de Placa	Conjunto da Placa		1
18	21/0157.....Anti-Vibration Mount	Tampon antivibratoire	Montura antivibratoria	Bloco Anti-vibração		4
19	7/8008.....Screw	Vis	Tornillo	Parafuse	M8 x 16	4
20	151.0.019.....Bolt	Boulon	Perno	Perno	M8	1
21	943/10400SF.....Handle & Bush - Orange	Guidon & Douille - Orange	Manillar & Buje - Naranja	Punho & Bucha - Laranja		1
21	943/10400BF.....Handle & Bush - Blue	Guidon & Douille - Bleu	Manillar & Buje - Azul	Punho & Bucha - Azul		1
21	943/10400GF.....Handle & Bush - Green	Guidon & Douille - Vert	Manillar & Buje - Verde	Punho & Bucha - Verde		1
21	943/10400RF.....Handle & Bush - Red	Guidon & Douille - Rouge	Manillar & Buje - Roja	Punho & Bucha - Vermelho		1
21	943/10400YF.....Handle & Bush - Yellow	Guidon & Douille - Jaune	Manillar & Buje - Amarillo	Punho & Bucha - Amarelo		1
21	943/10400WF.....Handle & Bush - White	Guidon & Douille - Blanc	Manillar & Buje - Blanco	Punho & Bucha - Branco		1
22	21.0.187.....Bush	Douille	Bucha	Bucha		1
23	943/99919.....Plate	Plaque	Placa	Placa	Hewden	1
23	943/99920.....Plate	Plaque	Placa	Placa	Travis Perkins	1
23	943/99936.....Plate	Plaque	Placa	Placa	Hirebase	1
24	4/6001.....Washer	Rondelle	Arandela	Anilha	M6	4
25	02.0.014.....Screw	Vis	Tornillo	Parafuse	M6 x 20	2
26	8/6007.....Nut	Ecrou	Tuerca	Porca	M6	2
27	943/15200.....Bedplate Kit	Ensemble Plaque d'assise	Conjunto de bancada	Conjunto da Placa de Apoio		1
28	943/15100.....Bedplate	Plaque d'assise	Bancada	Placa de Apoio		1
29	943/15300.....Bracket	Patte de Montage	Escuadra	Suporte		1



**Grondplaat en Voordeksel (UK), Sohlplatte und Frontabdeckung (UK),
Fundamentplade en Forreste kappe (UK), Piastra di Base e Copertura anteriore (UK)**

➔ 101216

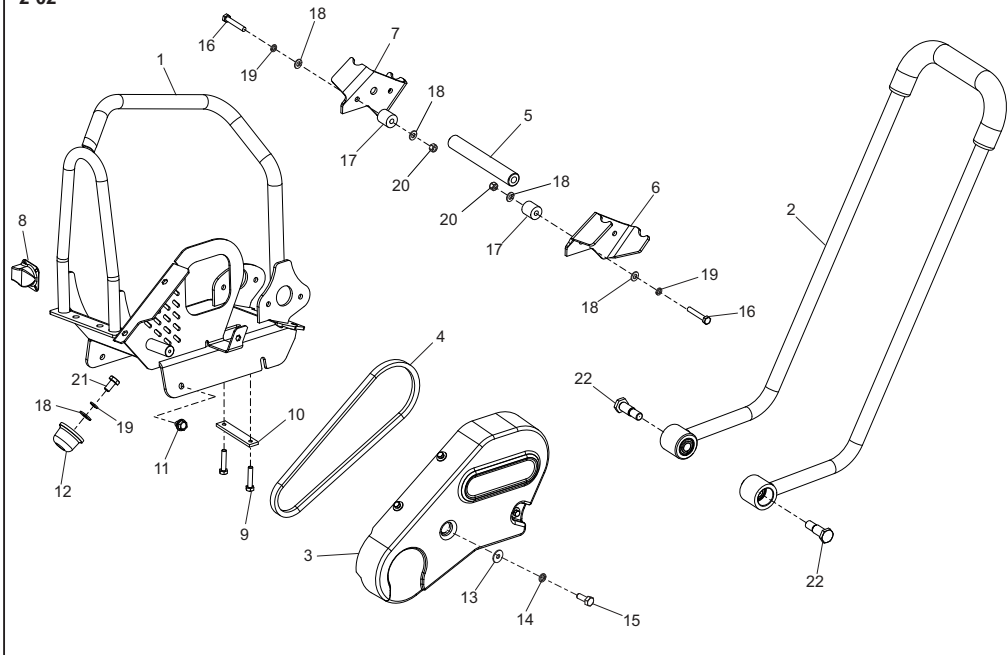
1	4/8003	Afdichtring	Scheibe	Spændeskive	Rondella	M8	6
2	4/8006	Afdichtring	Scheibe	Spændeskive	Rondella	M8	6
3	8/8008	Moer	Mutter	Møtrik	Dado	M8	4
4	☞ 27	Grondplaat	Sohlplatte	Fundamentplade	Piastra di Base		1
5	7/10025	Schroef	Schraube	Skruve	Vite	M10 x 12	4
6	151.0.161	Plaat - Motorklem	Halteplatte - Motor	Plade - Motorklamp	Piastra - Morsetto motore		1
7	7/8047	Schroef	Schraube	Skruve	Vite	M8 x 40	2
8	21/0162	Anti-tribvestiging	Schwingungsdämpfer	Antivibrationsophæng	Supporto antivibrazioni	M8 x 60	1
9	8/8001	Moer	Mutter	Møtrik	Dado	M8	1
10	21/0158	Riem	Riemen	Remmen	Cinghia		1
11	943/99917S	Riemschermkap - Oranje	Riemenabdeckung - Orange	Remskærm - Orange	Protezione Cinghia - Arancione		1
11	943/99917B	Riemschermkap - Blauw	Riemenabdeckung - Blau	Remskærm - Blå	Protezione Cinghia - Blu		1
11	943/99917G	Riemschermkap - Groen	Riemenabdeckung - Grün	Remskærm - Grøn	Protezione Cinghia - verde		1
11	943/99917R	Riemschermkap - Rood	Riemenabdeckung - Rot	Remskærm - Rød	Protezione Cinghia - Rosso		1
11	943/99917Y	Riemschermkap - Geel	Riemenabdeckung - Gelb	Remskærm - Gul	Protezione Cinghia - Giallo		1
11	943/99917W	Riemschermkap - Wit	Riemenabdeckung - Weiß	Remskærm - Hvid	Protezione Cinghia - Bianco		1
12	05.3.066	Afdichtring	Scheibe	Spændeskive	Rondella	1/4" x 3/4"	4
13	4/6005	Afdichtring	Scheibe	Spændeskive	Rondella	M6	4
14	02.0.012	Schroef	Schraube	Skruve	Vite	M6 x 16	4
15	943/99918	Steu	Strebe	Sprosse	Montante	M6	1
16	943/14500	Plaat	Platte-zsb	Plade	Gruppo Piastra		1
17	943/14500	Plaat	Platte-zsb	Plade	Gruppo Piastra		1
18	21/0157	Anti-tribvestiging	Schwingungsdämpfer	Antivibrationsophæng	Supporto antivibrazioni		4
19	7/8008	Schroef	Schraube	Skruve	Vite	M8 x 16	4
20	151.0.019	Bouten	Bolzen	Skrebolt	Bullone	M8	1
21	943/10400SF	Hendel & Bus - Oranje	Griff & Buchse - Orange	Håndtag & Bøsning - Orange	Impugnatura & Boccola - Arancione		1
21	943/10400BF	Hendel & Bus - Blauw	Griff & Buchse - Blau	Håndtag & Bøsning - Blå	Impugnatura & Boccola - Blu		1
21	943/10400GAF	Hendel & Bus - Groen	Griff & Buchse - Grün	Håndtag & Bøsning - Grøn	Impugnatura & Boccola - Verde		1
21	943/10400RF	Hendel & Bus - Rood	Griff & Buchse - Rot	Håndtag & Bøsning - Rød	Impugnatura & Boccola - Rosso		1
21	943/10400YF	Hendel & Bus - Geel	Griff & Buchse - Gelb	Håndtag & Bøsning - Gul	Impugnatura & Boccola - Giallo		1
21	943/10400WF	Hendel & Bus - Wit	Griff & Buchse - Weiß	Håndtag & Bøsning - Hvid	Impugnatura & Boccola - Bianco		1
22	21.0.187	Bus	Buchse	Bøsning	Boccola		1
23	943/99919	Plaat	Platte	Pade	Piastra	Hewden	1
23	943/99920	Plaat	Platte	Pade	Piastra	Travis Perkins	1
23	943/99936	Plaat	Platte	Pade	Piastra	Hirebase	1
24	4/6001	Afdichtring	Scheibe	Spændeskive	Rondella	M6	4
25	02.0.014	Schroef	Schraube	Skruve	Vite	M6 x 20	2
26	8/6007	Moer	Mutter	Møtrik	Dado	M6	2
27	943/15200	Grondplaat	Sohlplatten-Zsb	Fundamentplademontage	Gruppo piastra di base		1
28	943/15100	Grondplaat	Sohlplatte	Fundamentplade	Piastra di Base		1
29	943/15300	Steu	Halterung	Beslag	Staffa		1



**Bedplate and Front Cover (UK), Plaque d'assise et Capot Avant (UK),
Bancada y Cubierta delantera (UK), Placa de Apoyo e Tampa Frontal (UK)**

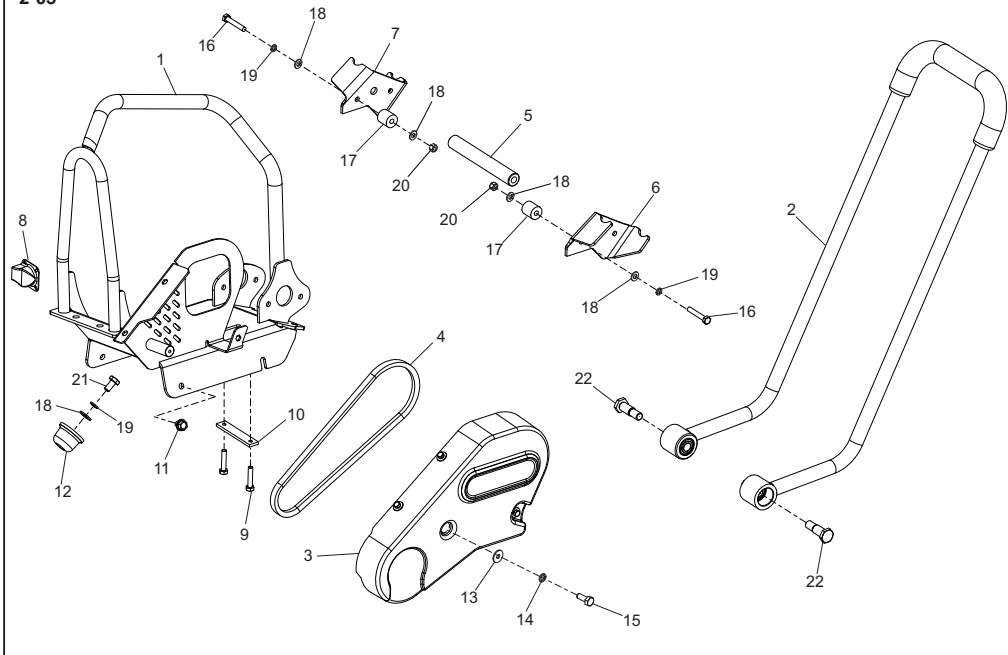
101217

1	943/14800	Bedplate	Plaque d'assise	Bancada	Placa de Apoyo	1
2	943/10400SF	Handle & Bush - Orange	Guidon & Douille - Orange	Manillar & Buje - Naranja	Punho & Bucha - Laranja	1
2	943/10400BF	Handle & Bush - Blue	Guidon & Douille - Bleu	Manillar & Buje - Azul	Punho & Bucha - Azul	1
2	943/10400GAF	Handle & Bush - Green	Guidon & Douille - Vert	Manillar & Buje - Verde	Punho & Bucha - Verde	1
2	943/10400RF	Handle & Bush - Red	Guidon & Douille - Rouge	Manillar & Buje - Roja	Punho & Bucha - Vermelho	1
2	943/10400YF	Handle & Bush - Yellow	Guidon & Douille - Jaune	Manillar & Buje - Amarillo	Punho & Bucha - Amarelo	1
2	943/10400WF	Handle & Bush - White	Guidon & Douille - Blanc	Manillar & Buje - Blanco	Punho & Bucha - Branco	1
3	943/99917S	Belt Guard - Orange	Capot de courroie - Orange	Protector de la correa - Naranja	Guarda da Cinta - Laranja	1
3	943/99917B	Belt Guard - Blue	Capot de courroie - Bleu	Protector de la correa - Azul	Guarda da Cinta - Azul	1
3	943/99917G	Belt Guard - Green	Capot de courroie - Vert	Protector de la correa - Verde	Guarda da Cinta - Verde	1
3	943/99917R	Belt Guard - Red	Capot de courroie - Rouge	Protector de la correa - Roja	Guarda da Cinta - Vermelho	1
3	943/99917Y	Belt Guard - Yellow	Capot de courroie - Jaune	Protector de la correa - Amarillo	Guarda da Cinta - Amarelo	1
3	943/99917W	Belt Guard - White	Capot de courroie - Blanc	Protector de la correa - Blanco	Guarda da Cinta - Branco	1
4	21/0271	Belt	Courroie	Correa	Cinta	1
5	943/99918	Strut	Bequille	Puntal	Apoio	M6
6	943/14500	Plate Kit	Ensemble de Plaque	Placa de Placa	Conjunto da Placa	1
7	943/14500	Plate Kit	Ensemble de Plaque	Conjunto de Placa	Conjunto da Placa	1
8	21/0270	Exhaust Deflector				1
9	7/8047	Screw	Vis	Tornillo	Parafuse	M8 x 40
10	151.0.161	Engine Clamp	Plaque de Serrage de Motor	Placa - Fijación motor	Placa de Base	1
11	7/10025	Screw	Vis	Tornillo	Parafuse	M10 x 12
12	05.3.066	Buffer	Butoir	Parachocs	Amortecedor	1
13	05.3.066	Washer	Rondelle	Arandela	Anilha	1/4" x 3/4"
14	4/6005	Washer	Rondelle	Arandela	Anilha	M6
15	02.0.012	Screw	Vis	Tornillo	Parafuse	M6 x 16
16	9/8014	Bolt	Boulon	Perno	Perno	M6
17	943/99933	Boss	Bossage	Resalle	Cubo	2
18	4/8006	Washer	Rondelle	Arandela	Anilha	M8
19	4/8003	Washer	Rondelle	Arandela	Anilha	M8
20	8/8008	Nut	Ecrou	Tuerca	Porca	M8
21	7/8011	Screw	Vis	Tornillo	Parafuse	M6 x 16
22	151.0.019	Bolt	Boulon	Perno	Perno	M8



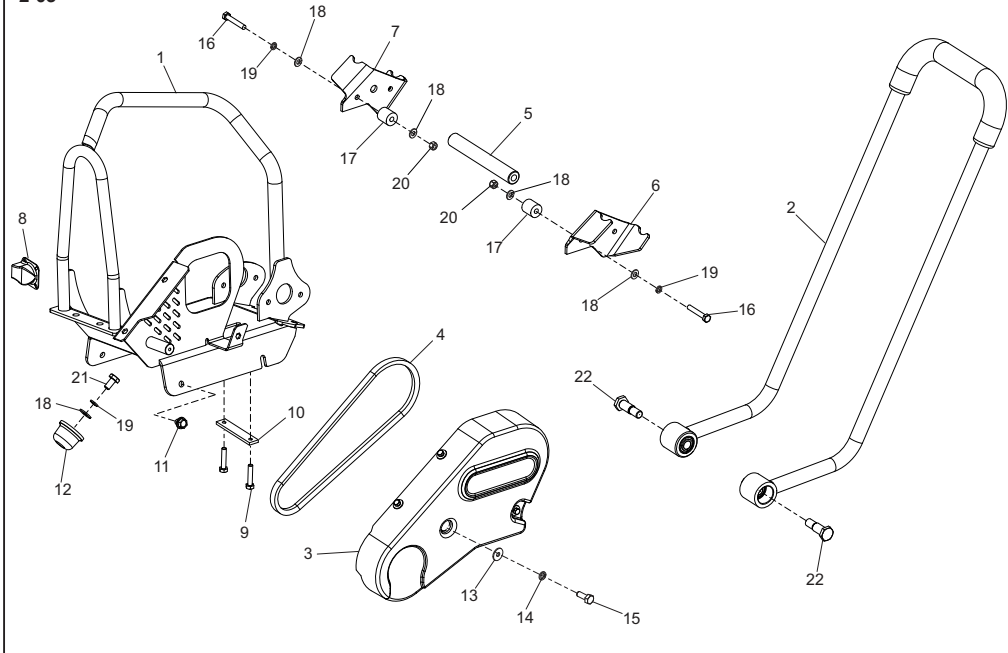
**Grondplaat en Voordeksel (UK), Sohlplatte und Frontabdeckung (UK),
Fundamentplade en Forreste kappe (UK), Piastra di Base e Copertura anteriore (UK)**

1	943/14800GrondplaatSohlplatteFundamentpladePiastra di Base1
2	943/10400SFHendel & Bus - OranjeGriff & Buchse - OrangeHåndtag & Bøsning - OrangeImpugnatura & Boccola - Arancione1
2	943/10400BFHendel & Bus - BlauwGriff & Buchse - BlauHåndtag & Bøsning - BlåImpugnatura & Boccola - Blu1
2	943/10400GAFHendel & Bus - GroenGriff & Buchse - GrünHåndtag & Bøsning - GrønImpugnatura & Boccola - Verde1
2	943/10400RFHendel & Bus - RoodGriff & Buchse - RotHåndtag & Bøsning - RødImpugnatura & Boccola - Rosso1
2	943/10400YFHendel & Bus - GeelGriff & Buchse - GelbHåndtag & Bøsning - GulImpugnatura & Boccola - Giallo1
2	943/10400WFHendel & Bus - WitGriff & Buchse - WeißHåndtag & Bøsning - HvidImpugnatura & Boccola - Bianco1
3	943/99917SRiemschermkap - OranjeRiemenabdeckung - OrangeRemskærm - OrangeProtezione Cinghia - Arancione1
3	943/99917BRiemschermkap - BlauwRiemenabdeckung - BlauRemskærm - BlåProtezione Cinghia - Blu1
3	943/99917GRiemschermkap - GroenRiemenabdeckung - GrünRemskærm - GrønProtezione Cinghia - verde1
3	943/99917RRiemschermkap - RoodRiemenabdeckung - RotRemskærm - RødProtezione Cinghia - Rosso1
3	943/99917YRiemschermkap - GeelRiemenabdeckung - GelbRemskærm - GulProtezione Cinghia - Giallo1
3	943/99917WRiemschermkap - WitRiemenabdeckung - WeißRemskærm - HvidProtezione Cinghia - Bianco1
4	21/0271RiemRiemenRemmenCinghia1
5	943/99918SteunStrebeSprosseMontanteM6
6	943/14500PlaatPlatte-zsbPladeGruppo Piastra1
7	943/14500PlaatPlatte-zsbPladeGruppo Piastra1
8	21/0270Exhaust DeflectorSchroefSkruViteM8 x 40
9	7/8047SchroefSchraubeSkruViteM8 x 40
10	151.0.161Plaat - Motor клемHalteplatte - MotorPlade - MotorklampPiastra - Morsetto motore1
11	7/10025SchroefSchraubeSkruViteM10 x 12
12	05.3.066BufferPufferKofangerRespingente1
13	05.3.066AfdichtringScheibeSpændeskiveRondella1/4" x 3/4"
14	4/6005AfdichtringScheibeSpændeskiveRondella1
15	02.0.012SchroefSchraubeSkruViteM6 x 16
16	9/8014BoutenBolzenSkruboltBulloneM6
17	943/99933NaafKnaufStudsBorchia2
18	4/8006AfdichtringScheibeSpændeskiveRondellaM8
19	4/8003AfdichtringScheibeSpændeskiveRondellaM8
20	8/8008MoerMutterMetrikDadoM8
21	7/8011SchroefSchraubeSkruViteM6 x 16
22	151.0.019BoutenBolzenSkruboltBulloneM8



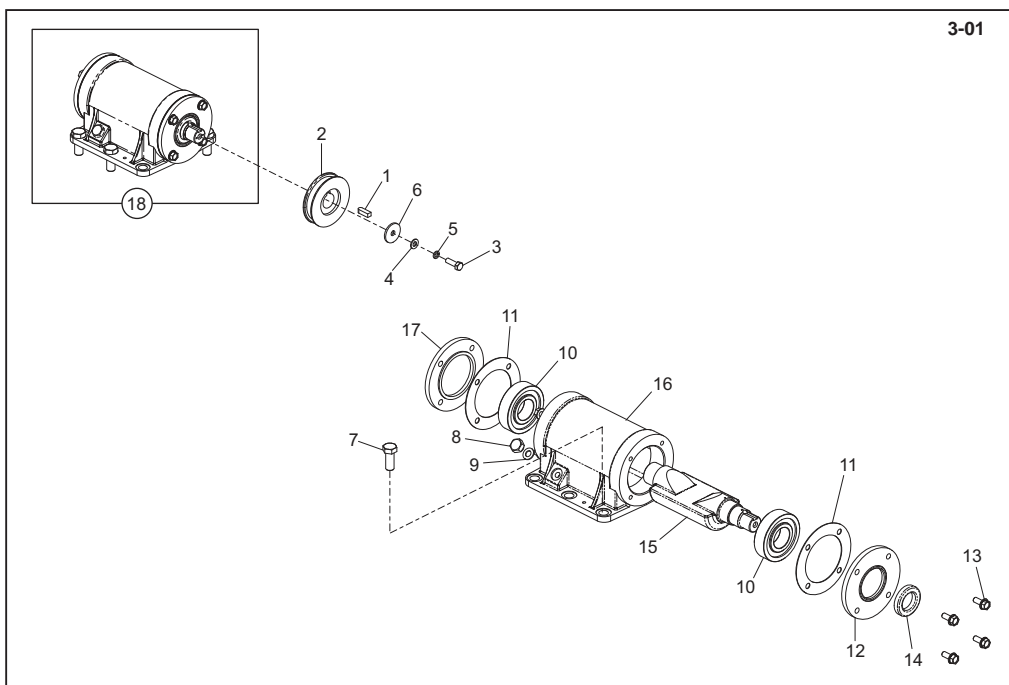
**Bedplate and Front Cover (Export), Plaque d'assise et Capot Avant (Export),
Bancada y Cubierta delantera (Export), Placa de Apoio e Tampa Frontal (Export)**

1	943/14800 Bedplate Plaque d'assise Bancada Placa de Apoio 1
2	943/10400SF Handle & Bush - Orange Guidon & Douille - Orange Manillar & Buje - Naranja Punho & Bucha - Laranja 1
2	943/10400BF Handle & Bush - Blue Guidon & Douille - Bleu Manillar & Buje - Azul Punho & Bucha - Azul 1
2	943/10400GAF Handle & Bush - Green Guidon & Douille - Vert Manillar & Buje - Verde Punho & Bucha - Verde 1
2	943/10400RF Handle & Bush - Red Guidon & Douille - Rouge Manillar & Buje - Roja Punho & Bucha - Vermelho 1
2	943/10400YF Handle & Bush - Yellow Guidon & Douille - Jaune Manillar & Buje - Amarillo Punho & Bucha - Amarelo 1
2	943/10400WF Handle & Bush - White Guidon & Douille - Blanc Manillar & Buje - Blanco Punho & Bucha - Branco 1
3	943/99917S Belt Guard - Orange Capot de courroie - Orange Protector de la correa - Naranja Guarda da Cinta - Laranja 1
3	943/99917B Belt Guard - Blue Capot de courroie - Bleu Protector de la correa - Azul Guarda da Cinta - Azul 1
3	943/99917G Belt Guard - Green Capot de courroie - Vert Protector de la correa - Verde Guarda da Cinta - Verde 1
3	943/99917R Belt Guard - Red Capot de courroie - Rouge Protector de la correa - Roja Guarda da Cinta - Vermelho 1
3	943/99917Y Belt Guard - Yellow Capot de courroie - Jaune Protector de la correa - Amarillo Guarda da Cinta - Amarelo 1
3	943/99917W Belt Guard - White Capot de courroie - Blanc Protector de la correa - Blanco Guarda da Cinta - Branco 1
4	21/0271 Belt Courroie Correa Cinta 1
5	943/99918 Strut Bequille Puntal Apoio M6
6	943/14500 Plate Kit Ensemble de Plaque Conjunto de Placa Conjunto da Placa 1
7	943/14500 Plate Kit Ensemble de Plaque Conjunto de Placa Conjunto da Placa 1
8	21/0270 Exhaust Deflector 1
9	7/8047 Screw Vis Tornillo Parafuse M8 x 40
10	151.0.161 Engine Clamp Plaque de Serrage de Motor Placa - Fijación motor Placa de Base 1
11	7/10025 Screw Vis Tornillo Parafuse M10 x 12
12	05.3.066 Buffer Butoir Parachocs Amortecedor 1
13	05.3.066 Washer Rondelle Arandela Anilha 1/4" x 3/4"
14	4/6005 Washer Rondelle Arandela Anilha M6
15	02.0.012 Screw Vis Tornillo Parafuse M6 x 16
16	9/8014 Bolt Boulon Perno Perno M6
17	943/99933 Boss Bossage Resalte Cubo 2
18	4/8006 Washer Rondelle Arandela Anilha M8
19	4/8003 Washer Rondelle Arandela Anilha M8
20	8/8008 Nut Ecrou Tuerca Porca M8
21	7/8011 Screw Vis Tornillo Parafuse M6 x 16
22	151.0.019 Bolt Boulon Perno Perno M8



**Grondplaat en Voordeksel (Export), Sohlplatte und Frontabdeckung (Export),
Fundamentplade en Forreste kappe (Export), Piastra di Base e Copertura anteriore (Export)** **2-03**

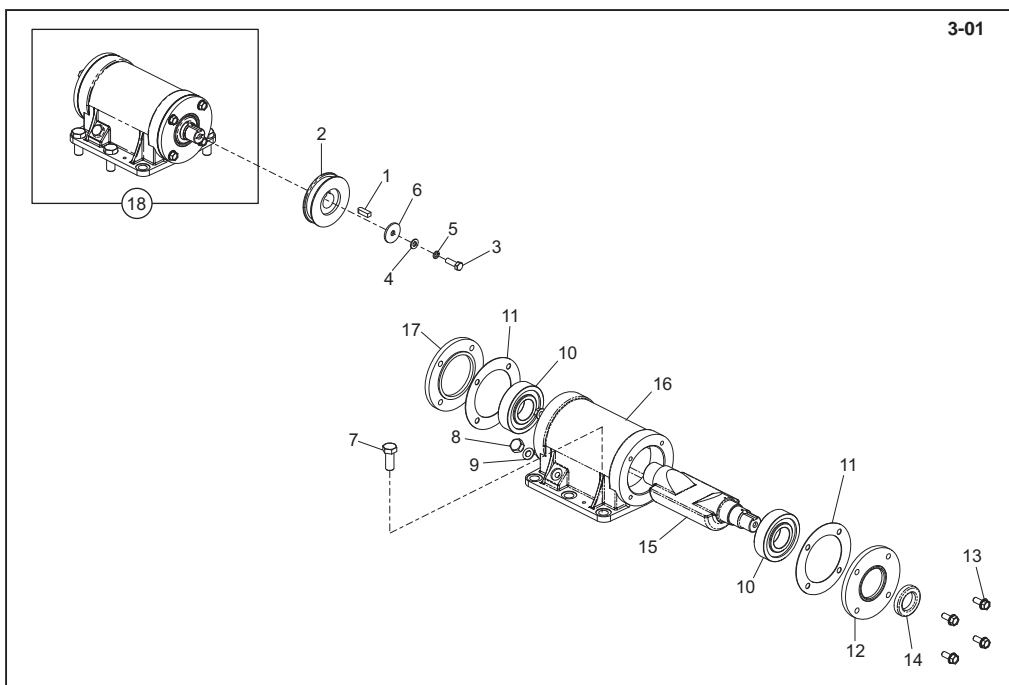
1	943/14800.....	Grondplaat.....	Sohlplatte.....	Fundamentplade.....	Piastra di Base.....	1
2	943/10400SF.....	Hendel & Bus - Oranje.....	Griff & Buchse - Orange.....	Håndtag & Bøsning - Orange.....	Impugnatura & Boccola - Arancione.....	1
2	943/10400BF.....	Hendel & Bus - Blauw.....	Griff & Buchse - Blau.....	Håndtag & Bøsning - Blå.....	Impugnatura & Boccola - Blu.....	1
2	943/10400GAF.....	Hendel & Bus - Groen.....	Griff & Buchse - Grün.....	Håndtag & Bøsning - Grøn.....	Impugnatura & Boccola - Verde.....	1
2	943/10400RF.....	Hendel & Bus - Rood.....	Griff & Buchse - Rot.....	Håndtag & Bøsning - Rød.....	Impugnatura & Boccola - Rosso.....	1
2	943/10400YF.....	Hendel & Bus - Geel.....	Griff & Buchse - Gelb.....	Håndtag & Bøsning - Gul.....	Impugnatura & Boccola - Giallo.....	1
2	943/10400WF.....	Hendel & Bus - Wit.....	Griff & Buchse - Weiß.....	Håndtag & Bøsning - Hvid.....	Impugnatura & Boccola - Bianco.....	1
3	943/99917S.....	Riemschermkap - Oranje.....	Riemenabdeckung - Orange.....	Remskærm - Orange.....	Protezione Cinghia - Arancione.....	1
3	943/99917B.....	Riemschermkap - Blauw.....	Riemenabdeckung - Blau.....	Remskærm - Blå.....	Protezione Cinghia - Blu.....	1
3	943/99917G.....	Riemschermkap - Groen.....	Riemenabdeckung - Grün.....	Remskærm - Grøn.....	Protezione Cinghia - verde.....	1
3	943/99917R.....	Riemschermkap - Rood.....	Riemenabdeckung - Rot.....	Remskærm - Rød.....	Protezione Cinghia - Rosso.....	1
3	943/99917Y.....	Riemschermkap - Geel.....	Riemenabdeckung - Gelb.....	Remskærm - Gul.....	Protezione Cinghia - Giallo.....	1
3	943/99917W.....	Riemschermkap - Wit.....	Riemenabdeckung - Weiß.....	Remskærm - Hvid.....	Protezione Cinghia - Bianco.....	1
4	21/0271.....	Riem.....	Riemen.....	Remmen.....	Cinghia.....	1
5	943/99918.....	Steun.....	Strebe.....	Sprosse.....	Montante.....	M6.....
6	943/14500.....	Plaat.....	Platte-zsb.....	Plade.....	Gruppo Piastra.....	1
7	943/14500.....	Plaat.....	Platte-zsb.....	Plade.....	Gruppo Piastra.....	1
8	21/0270.....	Exhaust Deflector.....	Schraube.....	Skruer.....	Vite.....	M8 x 40.....
9	7/8047.....	Schroef.....	Schraube.....	Skruer.....	Vite.....	M8 x 12.....
10	151.0.161.....	Plaat - Motorblok.....	Halteplatte - Motor.....	Plade - Motorblok.....	Piastra - Morsetto motore.....	1
11	7/10025.....	Schroef.....	Schraube.....	Skruer.....	Vite.....	M10 x 12.....
12	05.3.066.....	Buffer.....	Buffer.....	Kofanger.....	Respingente.....	1
13	05.3.066.....	Afdichtring.....	Scheibe.....	Spændeskive.....	Rondella.....	1/4" x 3/4".....
14	4/6005.....	Afdichtring.....	Scheibe.....	Spændeskive.....	Rondella.....	1
15	02.0.012.....	Schroef.....	Schraube.....	Skruer.....	Vite.....	M6 x 16.....
16	9/8014.....	Bouten.....	Bolzen.....	Skruer.....	Bullone.....	M6.....
17	943/99933.....	Naaf.....	Knauf.....	Studs.....	Borchia.....	2
18	4/8006.....	Afdichtring.....	Scheibe.....	Spændeskive.....	Rondella.....	M8.....
19	4/8003.....	Afdichtring.....	Scheibe.....	Spændeskive.....	Rondella.....	M8.....
20	8/8008.....	Moer.....	Mutter.....	Metrik.....	Dado.....	M8.....
21	7/8011.....	Schroef.....	Schraube.....	Skruer.....	Vite.....	M6 x 16.....
22	151.0.019.....	Bouten.....	Bolzen.....	Skruer.....	Bullone.....	M8.....


Vibrator Unit , Unité de vibration, Unidade Vibradora, Unidade do Vibrador

3-01

1	06.3.014.....Key	Clavette	Chaveta	Chaveta	8 x 7 x 25	1	
2	151.0.221.....Pulley.....	Poele	Polea	Polia.....	1	
3	7/8012.....Bolt	Boulon	Perno	Perno	M8 x 25	1	
4	4/8006.....Washer	Rondelle	Arandela	Anilha.....	M8.....	1	
5	4/8003.....Washer	Rondelle	Arandela	Anilha.....	M8.....	1	
6	77.0.142.....Washer	Rondelle	Arandela	Anilha.....	1	
7	07.9.062.....Screw	Vis	Tornillo	Parafuse	(F)*.....	6	
7	7/14011	Vis	Tornillo	Parafuse	(C)*.....	6	
8	MS12	Bung	Obturateur	Tapón	1/4".....	1	
9	15.0.102.....Washer	Rondelle	Arandela	Anilha.....	1	
10	12.1.057.....Bearing	Roulement	Coinjete	Rolamanto	2	
11	943/99904	Gasket	Joint.....	Junta	Gaxeta	2	
12	77.0.015.....End Cover.....	Carter d'extrémité.....	Tapa de fondo	Tampa de extremidade.....	1	
13	7/8037	Screw	Vis	Tornillo	Parafuse	M8 x 20.....	4
14	15.0.196.....Oil Seal	Joint d'étanchéité à l'huile	Obturador aceite	Vedação de Óleo.....	1	
15	943/99921	Vibrator Shaft.....	Axe	Eje	Veio	(F)*.....	1
15	942/99907	Vibrator Shaft.....	Axe	Eje	Veio	(C)*.....	1
16	77.0.013.....Housing	Carter de boîte de vitesses	Envoltura de la transmisión	Estojo da caixa de engrenagens	1	
17	77.0.016.....End Cover.....	Carter d'extrémité.....	Tapa de fondo	Tampa de extremidade.....	1	
18	PCLX/VIB-01	Vibrator Assembly	Ensemble vibreur	Conjunto de vibrador	Conjunto do Vibrador	(F)*.....	1
19	PCCX/VIB-02	Vibrator Assembly	Ensemble vibreur	Conjunto de vibrador	Conjunto do Vibrador	(C)*.....	1

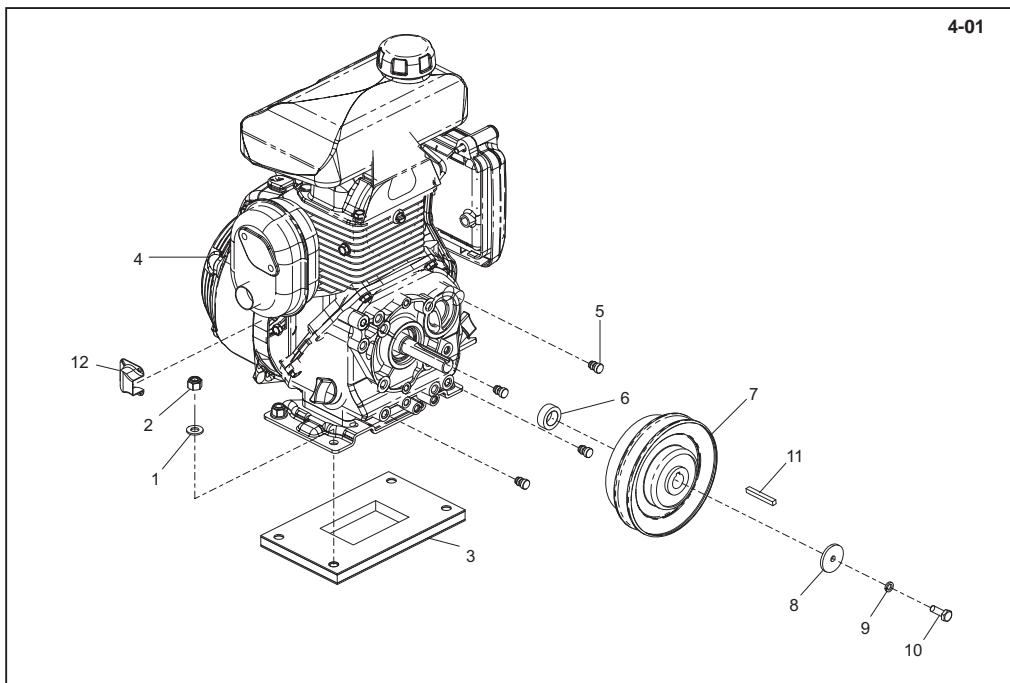
(F) =Fabricated Baseplate..... Elements du patin façonné..... Plancha base de soldadura..... Placa base maquinada
 (C) =Cast Baseplate..... Elements du patin moulé..... Plancha base de fundición..... Placa base fundida


Verwijder de plug en de afdichting, Rüttelteil, Vibratorenhed, Gruppo Vibratore

3-01

1	06.3.014.....	Spie.....	Kell.....	Feder.....	Chiave.....	8 x 7 x 25.....	1
2	151.0.221.....	Poelie.....	Riemenscheibe.....	Remskive.....	Puleggia.....	1
3	7/8012.....	Bouten.....	Bolzen.....	Skruebolt.....	Bullone.....	M8 x 25.....	1
4	4/8006.....	Afdichting.....	Scheibe.....	Spændeskive.....	Cuscinetto.....	M8.....	1
5	4/8003.....	Afdichting.....	Scheibe.....	Spændeskive.....	Cuscinetto.....	M8.....	1
6	77.0.142.....	Afdichting.....	Scheibe.....	Spændeskive.....	Cuscinetto.....	M8.....	1
7	07.9.062.....	Schroef.....	Schraube.....	Skrue.....	Vite.....	(F)*.....	6
7	7/14011.....	Schroef.....	Schraube.....	Skrue.....	Vite.....	(C)*.....	6
8	MS12.....	Plug.....	Verschlusschraube.....	Prop.....	Candela.....	1/4".....	1
9	15.0.102.....	Afdichting.....	Scheibe.....	Spændeskive.....	Cuscinetto.....	1
10	12.1.057.....	Lager.....	Lager.....	Lejje.....	Rolamento.....	2
11	943-99904.....	Tætningsring.....	Flachdichtung.....	Pakking.....	Gaurnizione.....	2
12	77.0.015.....	Eindæksel.....	Endschild.....	Endedæksel.....	Coperchio Estremità.....	1
13	7/8037.....	Schroef.....	Schraube.....	Skrue.....	Vite.....	M8 x 20.....	4
14	15.0.196.....	Oliefafdichting.....	Oldichtung.....	Oliepakning.....	Paralolio.....	1
15	943/99921.....	As.....	Welle.....	Aksel.....	Albero.....	(F)*.....	1
15	942/99907.....	As.....	Welle.....	Aksel.....	Albero.....	(C)*.....	1
16	77.0.013.....	Versnellingsbakhuis.....	Getriebekasten.....	Gearkassehus.....	Involucro scatola ingranaggi.....	1
17	77.0.016.....	Eindæksel.....	Endschild.....	Endedæksel.....	Coperchio Estremità.....	1
18	PCLX/VIB-01.....	Trielement.....	Rüttelwerk.....	Vibratorenhed.....	Gruppo vibratore.....	(F)*.....	1
19	PCX/VIB-02.....	Trielement.....	Rüttelwerk.....	Vibratorenhed.....	Gruppo vibratore.....	(C)*.....	1

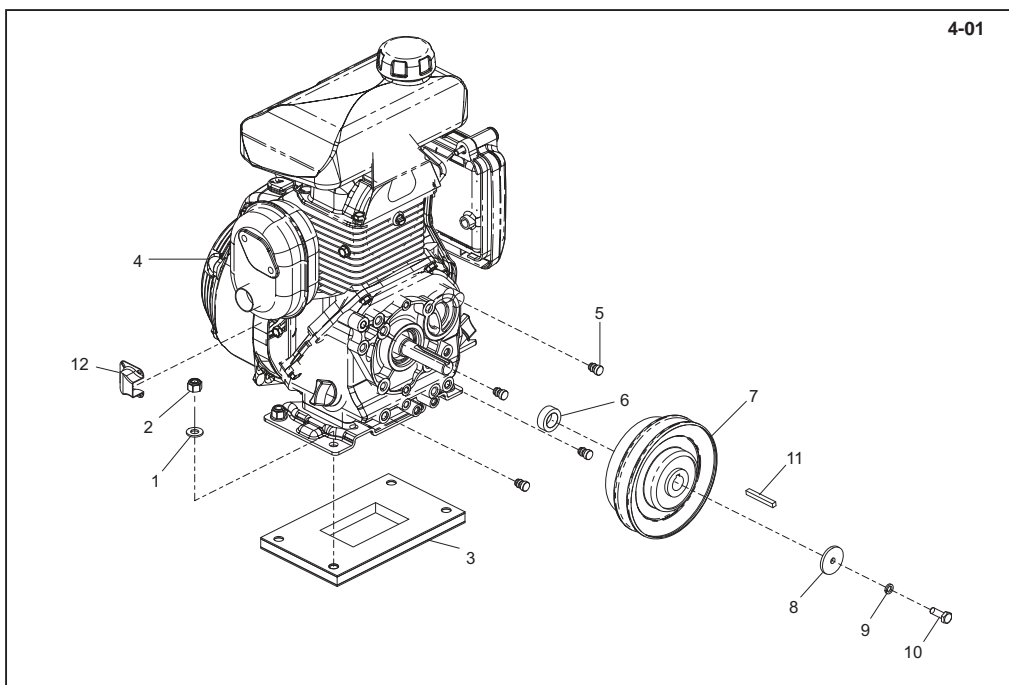
(F) =Vervaardigde grondplaat Stahlplatte..... Metallfundament..... Piastra di base fabricata
 (C) =Gegoten grondplaat..... Gussplatte..... Støbt fundament..... Forma della piastra di base



**Engine and Drive Kit, Moteur et Kit d'entraînement,
Motor y Kit Transmision, Motor e Kit de Transmissão**

4-01

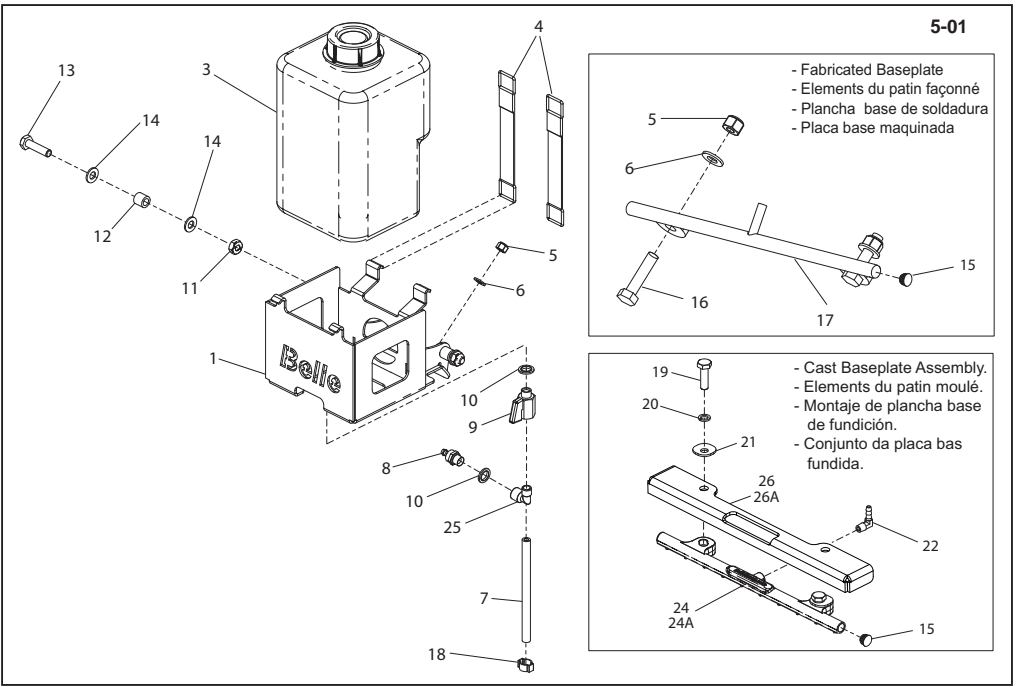
1	4/8006WasherRondelleArandelaAnilhaM84
2	8/8008NutEcrouTuercaPorcaM84
3	151.0.236Pad - Anti VibrationTampon AntivibratoireTampón AntivibratorioBlocco AntivibraçãoUK1
3	151/99956PlatePlaquePlacaPlacaExport1
4	20/0065EngineMoteurMotorMotorHonda GX1001
5	3/4037PlugBougieTapónBujão4
6	943/99916SpacerEntretoiseEspaciadorEspaçador1
7	21/0161ClutchEmbrayageEmbragueEmbraiagem1
8	4/6015WasherRondelleArandelaAnilha30 x 6.2 x 31
9	4/6011WasherRondelleArandelaAnilha1/4"1
10	7/6050ScrewVisTornilloParafuso1
11	06.8.001KeyClavetteChavetaChave1
12	21/0236Guard PlatePlaque de ProtectionPlaca de defensaPlaca de Guarda1



**Motor en Aandrijfset, Motor und antriebsbausatz,
Motor og Gearkit, Motore e Kit trasmissione**

4-01

1	4/8006Afdichtring.....	Scheibe.....	Spændeskive.....	Cuscinetto.....	M8.....	4
2	8/8008Moer.....	Mutter.....	Møtrik.....	Dado.....	M8.....	4
3	151.0.236Onderplaat - Antitrilstuk.....	Dämpfungsbeilage.....	Klods - Antivibration.....	Tampone - Antivibrazione.....	UK.....	1
3	151/99956Plaat.....	Platte.....	Plade.....	Piastra.....	Export.....	1
4	20/0065Motor.....	Motor.....	Motor.....	Motore.....	Honda GX100.....	1
5	3/4037Plug.....	Verslusschraube.....	Prop.....	Candela.....		4
6	943/99916Afstandsstuk.....	Distanzstück.....	Afstandsstykke.....	Distanziale.....		1
7	21/0161Kuppling.....	Koppeling.....	Kobling.....	Frizione.....		1
8	4/6015Afdichtring.....	Scheibe.....	Spændeskive.....	Cuscinetto.....	30 x 6.2 x 3	1
9	4/6011Afdichtring.....	Scheibe.....	Spændeskive.....	Cuscinetto.....	1/4"	1
10	7/6050Screw.....	Vis.....	Tornillo.....	Parafuso.....		1
11	06.8.001Spie.....	Keil.....	Kile.....	Chiave.....		1
12	21/0236Bescheringsplaat.....	Schutzplatte.....	Skærmplade.....	Piastra di protezione.....		1



- Fabricated Baseplate
- Elements du patin façonné
- Plancha base de soldadura
- Placa base maquinada

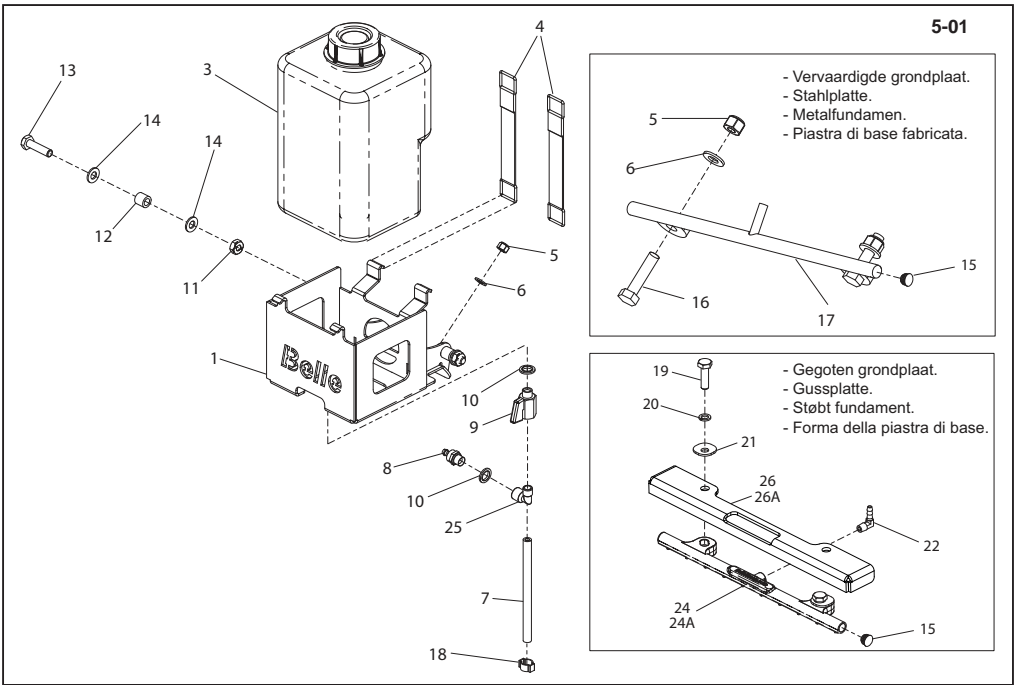
- Cast Baseplate Assembly.
- Elements du patin moulé.
- Montaje de plancha base de fundición.
- Conjunto da placa bas fundida.

**Water Bottle Kit (UK), Bouteille d'eau montée à l'avant (UK),
Depósito de agua de montaje frontal (UK), Garrafa de Água Instalada na Parte Dianteira (UK)**

► I 099491

1	943/14000.....Bracket	Patte de montage	Escuadra	Suporte	M8.....	1
3	943/99937.....Tank	Réservoir	Tanque	Depósito	M8.....	1
4	943/99931.....Strap	Courroie.....	Correa	Cinta	M8.....	2
5	8/8008.....Nut	Ecrou	Tuerca	Porca	M8.....	3
6	4/8006.....Washer	Rondelle	Arandela	Anilha	M8.....	3
7	14.0.840.....Hose	Tuyau	Manguera	Tubagem.....		1
8	14.0.619.....Fitting	Fixation	Accesorio	Encaixe		1
9	15.9.025.....Valve.....	Soupape	Válvula	Válvula		1
10	15.0.102.....Washer	Rondelle	Arandela	Anilha		2
11	8/10001.....Nut	Ecrou	Tuerca	Porca	M10.....	1
12	943/99929.....Spacer	Entretoise	Espaciador	Espaçador		1
13	7/10009.....Screw.....	Vis.....	Tornillo	Parafuso	M10 x 40.....	1
14	4/1005.....Washer	Rondelle	Arandela	Anilha		2
15	3/4040.....Plug	Bougelle	Tapón	Bujão		2
16	7/8007.....Screw.....	Vis.....	Tornillo	Parafuso	M8 x 35	2
17	943/14100.....Water Spray Bar.....	Barre d'arrosage.....	Barra rociado agua.....	Barra de Aspersão de Água	PCLX 320 / 320S.....	1
17A	943/14400.....Water Spray Bar.....	Barre d'arrosage.....	Barra rociado agua.....	Barra de Aspersão de Água	PCLX 400	1
18	15.0.063.....Clip	Collier	Presilla	Grampo		1
19	7/10003.....Screw.....	Vis.....	Tornillo	Parafuso	M10 x 35.....	2
20	4/1003.....Washer	Rondelle	Arandela	Anilha	M10.....	2
21	151/99941.....Plate	Plaque	Placa	Placa	► 075701.....	2
22	6/0215.....Elbow.....	Coude	Codo	Canto	1/8"	1
24	151/99938.....Water Spray	Soudé d'eau Pulvérisée	Soldaro Rociador De Agua	Soldado Dovaporizador De Água	PCLX 320S.....	1
24A	151/99939.....Water Spray	Soudé d'eau Pulvérisée	Soldaro Rociador De Agua	Soldado Dovaporizador De Água	PCLX 400	1
25	15.9.026.....Elbow.....	Coude	Codo	Canto	1/4" (C)	1
26	943/99952.....Guard.....	Capot	Protector	Guarda	► 075702 (320).....	1
26A	943/99953.....Guard.....	Capot.....	Protector	Guarda	► 075702 (400).....	1

(F) =Fabricated Baseplate.....Elements du patin façonné..... Plancha base de soldadura..... Placa base maquinada
(C) =Cast Baseplate.....Elements du patin moulé..... Plancha base de fundición..... Placa base fundida



- Vervaardigde grondplaat.
- Stahlplatte.
- Metaalfundamen.
- Piastra di base fabricata.

- Gegoten grondplaat.
- Gussplatte.
- Støbt fundament.
- Forma della piastra di base.

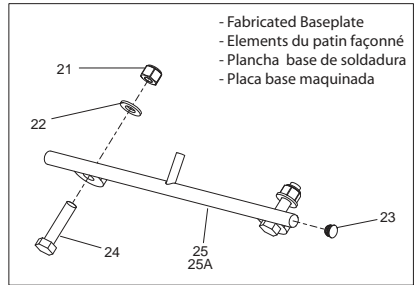
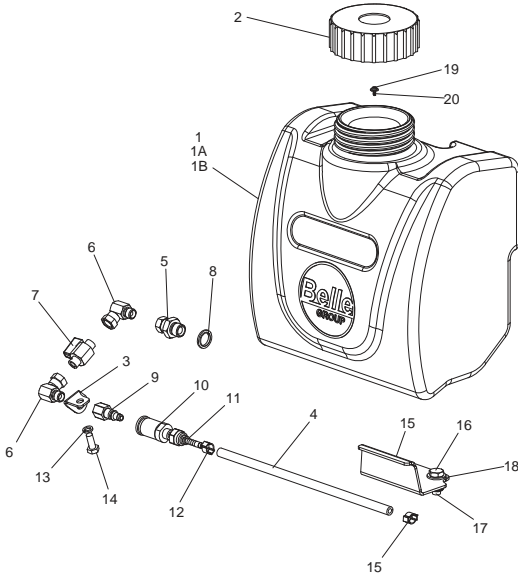
**Waterinstallatie (UK), Wasserstrahlsystem (UK),
Vandsprøjtesystem (UK), Sistema di spruzzo dell'acqua (UK)**

► I 099491

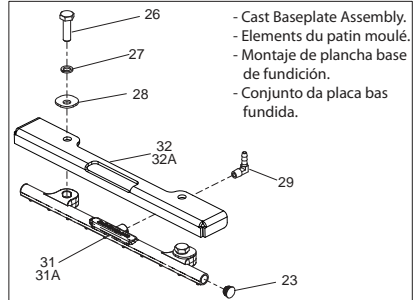
1	943/14000SteunHalteringBeslagStaffaM81
3	943/99937TankTankTankSerbatoioM81
4	943/99931De RiemStrapRemmenCinghiaM82
5	8/8008MoerMutterMetrikDadoM83
6	4/8006AfdichtringScheibeSlangeFlessibileM83
7	14.0.840SlangSchlauchMangueraTubagemM81
8	14.0.619FittingArmatuurFissoAccessorioM81
9	15.9.025VentielVentilVentilValvolaM81
10	15.0.102AfdichtringScheibeSpændeskiveCuscinettoM82
11	8/10001MoerMutterMetrikDadoM101
12	943/99929AfstandsstukDistanzstückAfstandsstykkeDistanzialeM81
13	7/10009SchroefSchraubeSkruueViteM10 x 401
14	4/1005AfdichtringScheibeSpændeskiveCuscinettoM82
15	3/4040PlugVerschlusschraubePropCandelaM8 x 352
16	7/8007SchroefSchraubeSkruueViteM8 x 352
17	943/14100Water Spray BarBarre d'arrosageBarra rociado aguaBarra de Aspersão de ÁguaPCLX 320 / 320S1
17A	943/14400Water Spray BarBarre d'arrosageBarra rociado aguaBarra de Aspersão de ÁguaPCLX 4001
18	15.0.063KlemClipKlemmeFermaglio1/8"1
19	7/10003SchroefSchraubeSkruueViteM10 x 352
20	4/1003AfdichtringScheibeSpændeskiveCuscinettoM102
21	151/99941PlaatPlatteBladePiastra► 0757012
22	6/0215ElleboogstukKrümmerVinkelstykkeGomito1/8"1
24	151/99938Watersproeier GelastSprühwasser SchweißvorrichtungSprinkler, Svejset EnhedDiffusore AcquaPCLX320S1
24A	151/99939Watersproeier GelastSprühwasser SchweißvorrichtungSprinkler, Svejset EnhedDiffusore AcquaPCLX 4001
25	15.9.026ElbowCoudeCodoCanto1/4" (C)1
26	943/99952BeschermkapAbdeckungSkærm - OrangeProtezione► 075702 (320)1
26A	943/99953BeschermkapAbdeckungSkærm - OrangeProtezione► 075702 (400)1

(F) =Vervaardigde grondplaat .StahlplatteMetaalfundament Piastra di base fabricata
(C) =Gegoten grondplaat.....GussplatteStøbt fundament Forma della piastra di base

5-02



- Fabricated Baseplate
- Elements du patin façonné
- Plancha base de soldadura
- Placa base maquinada

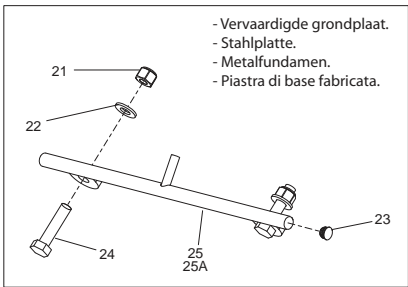
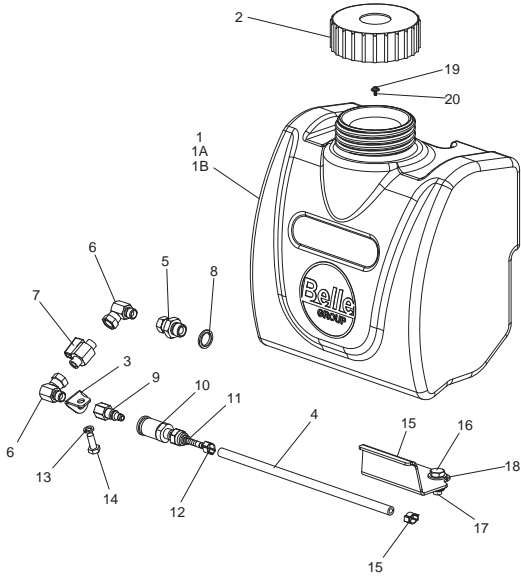


- Cast Baseplate Assembly.
- Elements du patin moulé.
- Montage de plancha base de fundición.
- Conjunto da placa bas fundida.

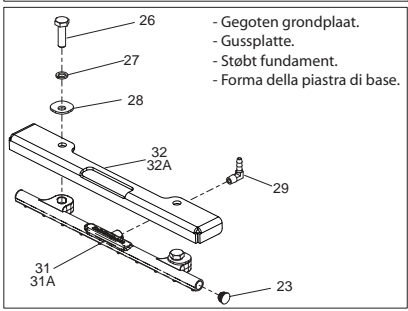
**Water Bottle Kit (UK), Bouteille d'eau montée à l'avant (UK),
Depósito de agua de montaje frontal (UK), Garrafa de Água Instalada na Parte Dianteira (UK)**

5-02

1	943/99946STank - Orange	Réservoir - OrangeTanque - NaranjaDepósito - Laranja1
1A	943/99946RTank - Red	Réservoir - RougeTanque - RojaDepósito - Vermelho1
1B	943/99946YTank - Yellow	Réservoir - JauneTanque - AmarillaDepósito - Amarelo1
2	72/0028Cap	CapuchonCasqueteTampa1
3	960/99903Bracket	Patte de MontageEscuadraSuporte1
4	960/99904Hose	TuyauMangueraTubagem1
5	6/0146Adapter	AdapteurAdapaterAdaptador1
6	6/0193Elbow	CoudeCodoCanto1
7	6/0199Ball Valve	RobinetVálvula esféricaVálvula de Esferas1
8	5/0007Washer	RondelleArandelaAnilha1
9	14.0.591Nipple	GraisseurTetónBocal1
10	14.0.590Coupling	CouplageAcoplamientoAcoplamento1
11	6/0201Adapter	AdapteurAdapaterAdaptador1
12	15.0.063Clip	CollierPresillaGrampo2
13	4/8003Washer	RondelleArandelaAnilhaM8
14	4/1005Washer	RondelleArandelaAnilha1
15	960/99905Bracket	Patte de MontageEscuadraSuporte1
16	7/10005Screw	VisTornilloParafusoM10 x 25
17	8/10006Nut	EcrouTuercaPorcaM10
18	4/1004Washer	RondelleArandelaAnilhaM10
19	21.0.140Screw	VisTornilloParafusoM6 x 14
20	4/5002Washer	RondelleArandelaAnilhaM5
21	8/8008Nut	EcrouTuercaPorcaM8
22	4/8006Washer	RondelleArandelaAnilhaM8
23	3/4040Plug	BougieTapónBujão2
24	7/8007Screw	VisTornilloParafusoM8 x 35
25	943/14100Water Spray Bar	Barre d'arrosageBarra rociado aguaBarra de Aspersão de ÁguaPCLX 320 / 320S
25A	943/14400Water Spray Bar	Barre d'arrosageBarra rociado aguaBarra de Aspersão de ÁguaPCLX 400
26	7/10003Screw	VisTornilloParafusoM10 x 35
27	4/1003Washer	RondelleArandelaAnilhaM10
28	151/99941Plate	PlaquePlacaPlacaM10
29	6/0215Elbow	CoudeCodoCanto1/8"
31	151/99938Water Spray	Soudé d'eau PulvériséeSoldaro Rociador De AguaSoldado Dovaporizador De AguaPCLX 320 / 320S
31A	151/99939Water Spray	Soudé d'eau PulvériséeSoldaro Rociador De AguaSoldado Dovaporizador De AguaPCLX 400
32	943/99952Guard	CapotProtectorGuarda075702
32A	943/99953Guard	CapotProtectorGuarda075702



- Vervaardigde grondplaat.
- Stahlplatte.
- Metafundamen.
- Piastra di base fabricata.

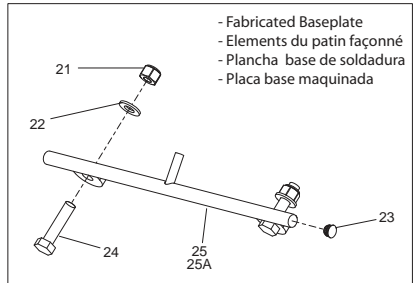
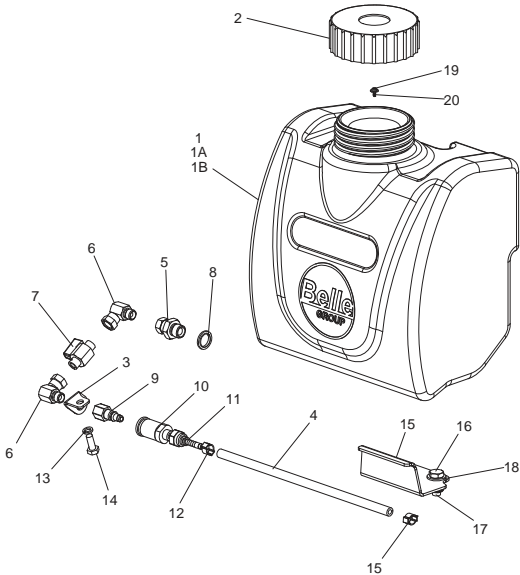


- Gegoten grondplaat.
- Gussplatte.
- Støbt fundament.
- Forma della piastra di base.

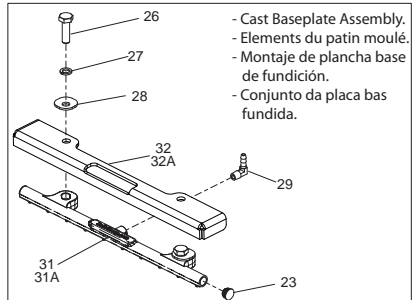
Water Bottle Kit (UK), Bouteille d'eau montée à l'avant (UK), Depósito de agua de montaje frontal (UK), Garrafa de Água Instalada na Parte Dianteira (UK) 5-02

1	943/99946S	Tank - Orange	Réservoir - Orange	Tanque - Naranja	Depósito - Laranja	1
1	943/99946R	Tank - Red	Réservoir - Rouge	Tanque - Roja	Depósito - Vermelho	1
1	943/99946Y	Tank - Yellow	Réservoir - Jaune	Tanque - Amarilla	Depósito - Amarelo	1
2	72/0028	Kap	Kappe	Hætte	Cappuccio	1
3	960/99903	Steun	Halterung	Bestlag	Staffa	1
4	960/99904	Slang	Schlauchstück	Slange	Flessibile	1
5	6/0146	Adapter	Adapter	Adapter	Adattatore	1
6	6/0193	Elleboogstuk	Krümmer	Vinkelstykke	Gomito	2
7	6/0199	Kugelkep	Kugelventil	Kugleventil	Valvola a sfera	1
8	5/0007	Afdichtring	Scheibe	Spændeskive	Rondella	1
9	14.0.591	Nippel	Nippel	Nippel	Nipplo	1
10	14.0.590	Koppeling	Kupplungsstück	Muffe	Manicotto di giunzione	1
11	6/0201	Adapter	Adapter	Adapter	Adattatore	1
12	15.0.063	Klem	Clip	Klemme	Fermaglio	2
13	4/8003	Afdichtring	Scheibe	Spændeskive	Rondella	M8 1
14	4/1005	Afdichtring	Scheibe	Spændeskive	Rondella	1
15	960/99905	Steun	Halterung	Bestlag	Staffa	1
16	7/10005	Schroef	Schraube	Skrue	Vite	M10 x 25 2
17	8/10006	Moer	Mutter	Møtrik	Dado	M10 2
18	4/1004	Afdichtring	Scheibe	Spændeskive	Rondella	M10 2
19	21.0.140	Schroef	Schraube	Skrue	Vite	M6 x 14 1
20	4/5002	Afdichtring	Scheibe	Spændeskive	Rondella	M5 1
21	8/8008	Moer	Mutter	Møtrik	Dado	M8 2
22	4/8006	Afdichtring	Scheibe	Spændeskive	Rondella	M8 2
23	3/4040	Plug	Verschlusschraube	Prop	Candela	2
24	7/8007	Schroef	Schraube	Skrue	Vite	M8 x 35 2
25	943/14100	Watersproeier Gelast	Sprühwasser Schweißvorrichtung	Sprinkler, Svejset Enhed	Diffusore Acqua	PCLX 320 / 320S 1
25A	943/14400	Watersproeier Gelast	Sprühwasser Schweißvorrichtung	Sprinkler, Svejset Enhed	Diffusore Acqua	PCLX 400 1
26	7/10003	Schroef	Schraube	Skrue	Vite	M10 x 35 2
27	4/1003	Afdichtring	Scheibe	Spændeskive	Rondella	M8 2
28	151/99941	Plaat	Platte	Blade	Piastra	→ 075701 2
29	6/0215	Elleboogstuk	Krümmer	Vinkelstykke	Gomito	1/8 1
31	151/99938	Watersproeier Gelast	Sprühwasser Schweißvorrichtung	Sprinkler, Svejset Enhed	Diffusore Acqua	PCLX 320 / 320S 1
31A	151/99939	Watersproeier Gelast	Sprühwasser Schweißvorrichtung	Sprinkler, Svejset Enhed	Diffusore Acqua	PCLX 400 1
32	943/99952	Beschermkap	Abdeckung	Skærm - Orange	Protezione	→ 075702 1
32A	943/99953	Beschermkap	Abdeckung	Skærm - Orange	Protezione	→ 075702 1

5-03



- Fabricated Baseplate
- Elements du patin façonné
- Plancha base de soldadura
- Placa base maquinada

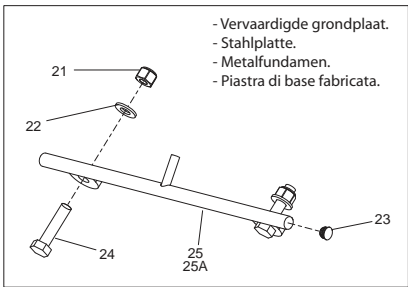
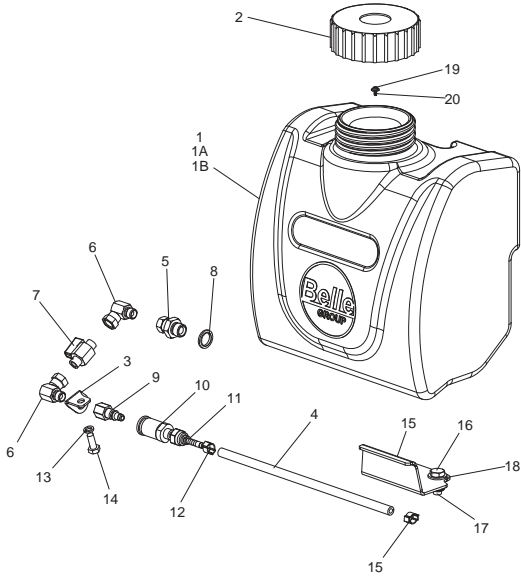


- Cast Baseplate Assembly.
- Elements du patin moulé.
- Montaje de plancha base de fundición.
- Conjunto da placa bas fundida.

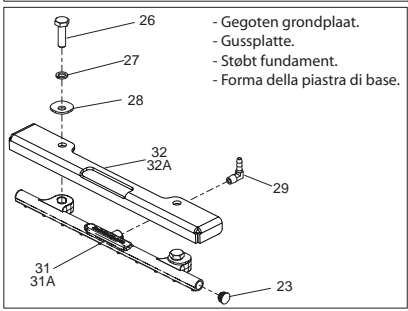
**Water Bottle Kit (Export), Bouteille d'eau montée à l'avant (Export),
Depósito de agua de montaje frontal (Export), Garrafa de Água Instalada na Parte Dianteira (Export)**

5-03

1	943/99946STank - Orange	Réservoir - OrangeTanque - NaranjaDepósito - Laranja1
1A	943/99946RTank - Red	Réservoir - RougeTanque - RojaDepósito - Vermelho1
1B	943/99946YTank - Yellow	Réservoir - JauneTanque - AmarillaDepósito - Amarelo1
2	72/0028Cap	CapuchonCasqueteTampa1
3	960/99903Bracket	Patte de MontageEcuadraSuporte1
4	960/99904Hose	TuyauMangueraTubagem1
5	6/0146Adapter	AdapteurAdapaterAdaptador1
6	6/0193Elbow	CoudeCodoCanto1
7	6/0199Ball Valve	RobinetVálvula esféricaVálvula de Esferas1
8	5/0007Washer	RondelleArandelaAnilha1
9	14.0.591Nipple	GraisseurTetónBocal1
10	14.0.590Coupling	CouplageAcoplamientoAcoplamento1
11	6/0201Adapter	AdapteurAdapaterAdaptador1
12	15.0.063Clip	CollierPresillaGrampo2
13	4/8003Washer	RondelleArandelaAnilhaM8
14	4/1005Washer	RondelleArandelaAnilha1
15	960/99905Bracket	Patte de MontageEcuadraSuporte1
16	7/10005Screw	VisTornilloParafusoM10 x 25
17	8/10006Nut	EcrouTuercaPorcaM10
18	4/1004Washer	RondelleArandelaAnilhaM10
19	21.0.140Screw	VisTornilloParafusoM6 x 14
20	4/5002Washer	RondelleArandelaAnilhaM5
21	8/8008Nut	EcrouTuercaPorcaM8
22	4/8006Washer	RondelleArandelaAnilhaM8
23	3/4040Plug	BougieTapónBujão2
24	7/8007Screw	VisTornilloParafusoM8 x 35
25	943/14100Water Spray Bar	Barre d'arrosageBarra rociado aguaBarra de Aspersão de ÁguaPCLX 320 / 320S
25A	943/14400Water Spray Bar	Barre d'arrosageBarra rociado aguaBarra de Aspersão de ÁguaPCLX 400
26	7/10003Screw	VisTornilloParafusoM10 x 35
27	4/1003Washer	RondelleArandelaAnilhaM10
28	151/99941Plate	PlaquePlacaPlacaM10
29	6/0215Elbow	CoudeCodoCanto1/8"
31	151/99938Water Spray	Soudé d'eau PulvériséeSoldaro Rociador De AguaSoldado Dovaporizador De ÁguaPCLX 320 / 320S
31A	151/99939Water Spray	Soudé d'eau PulvériséeSoldaro Rociador De AguaSoldado Dovaporizador De ÁguaPCLX 400
32	943/99952Guard	CapotProtectorGuarda075702
32A	943/99953Guard	CapotProtectorGuarda075702



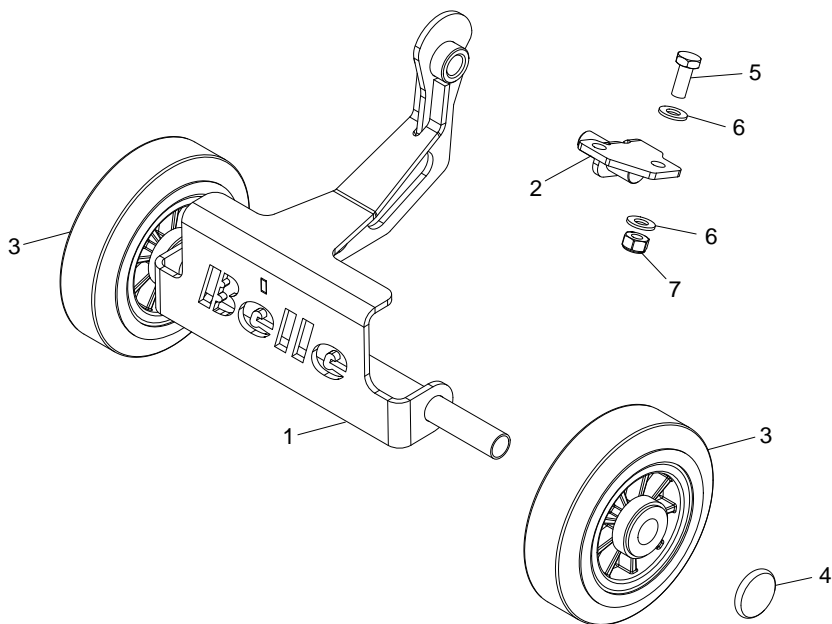
- Vervaardigde grondplaat.
- Stahlplatte.
- Metafundamen.
- Piastra di base fabricata.



- Gegoten grondplaat.
- Gussplatte.
- Støbt fundament.
- Forma della piastra di base.

Water Bottle Kit (Export), Bouteille d'eau montée à l'avant (Export), Depósito de agua de montaje frontal (Export), Garrafa de Água Instalada na Parte Dianteira (Export) 5-03

1	943/99946S	Tank - Orange	Réservoir - Orange	Tanque - Naranja	Depósito - Laranja	1
1	943/99946R	Tank - Red	Réservoir - Rouge	Tanque - Roja	Depósito - Vermelho	1
1	943/99946Y	Tank - Yellow	Réservoir - Jaune	Tanque - Amarilla	Depósito - Amarelo	1
2	72/0028	Kap	Kappe	Hætte	Cappuccio	1
3	960/99903	Steun	Halterung	Bestag	Staffa	1
4	960/99904	Slang	Schlauchstück	Slange	Flessibile	1
5	6/0146	Adapter	Adapter	Adapter	Adattatore	1
6	6/0193	Elleboogstuk	Krümmer	Vinkelstykke	Gomito	2
7	6/0199	Kugelkep	Kugelventil	Kugelventil	Valvola a sfera	1
8	5/0007	Afdichtring	Scheibe	Spændeskive	Rondella	1
9	14.0.591	Nippel	Nippel	Nippel	Nipplo	1
10	14.0.590	Koppeling	Kupplungsstück	Muffe	Manicotto di giunzione	1
11	6/0201	Adapter	Adapter	Adapter	Adattatore	1
12	15.0.063	Klem	Clip	Klemme	Fermaglio	2
13	4/8003	Afdichtring	Scheibe	Spændeskive	Rondella	M8 1
14	4/1005	Afdichtring	Scheibe	Spændeskive	Rondella	1
15	960/99905	Steun	Halterung	Bestag	Staffa	1
16	7/10005	Schroef	Schraube	Vite		M10 x 25 2
17	8/10006	Moer	Mutter	Møtrik	Dado	M10 2
18	4/1004	Afdichtring	Scheibe	Spændeskive	Rondella	M10 2
19	21.0.140	Schroef	Schraube	Skruue	Vite	M6 x 14 1
20	4/5002	Afdichtring	Scheibe	Spændeskive	Rondella	M5 1
21	8/8008	Moer	Mutter	Møtrik	Dado	M8 2
22	4/8006	Afdichtring	Scheibe	Spændeskive	Rondella	M8 2
23	3/4040	Plug	Verschlusschraube	Prop	Candela	2
24	7/8007	Schroef	Schraube	Skruue	Vite	M8 x 35 2
25	943/14100	Watersproeier Gelast	Sprühwasser Schweißvorrichtung	Sprinkler, Svejset Enhed	Diffusore Acqua	PCLX 320 / 320S 1
25A	943/14400	Watersproeier Gelast	Sprühwasser Schweißvorrichtung	Sprinkler, Svejset Enhed	Diffusore Acqua	PCLX 400 1
26	7/10003	Schroef	Schraube	Skruue	Vite	M10 x 35 2
27	4/1003	Afdichtring	Scheibe	Spændeskive	Rondella	M8 2
28	151/99941	Plaat	Platte	Blade	Piastra	→ 075701 2
29	6/0215	Elleboogstuk	Krümmer	Vinkelstykke	Gomito	1/8" 1
31	151/99938	Watersproeier Gelast	Sprühwasser Schweißvorrichtung	Sprinkler, Svejset Enhed	Diffusore Acqua	PCLX 320 / 320S 1
31A	151/99939	Watersproeier Gelast	Sprühwasser Schweißvorrichtung	Sprinkler, Svejset Enhed	Diffusore Acqua	PCLX 400 1
32	943/99952	Beschermpap	Abdeckung	Skærm - Orange	Protezione	→ 075702 1
32A	943/99953	Beschermpap	Abdeckung	Skærm - Orange	Protezione	→ 075702 1

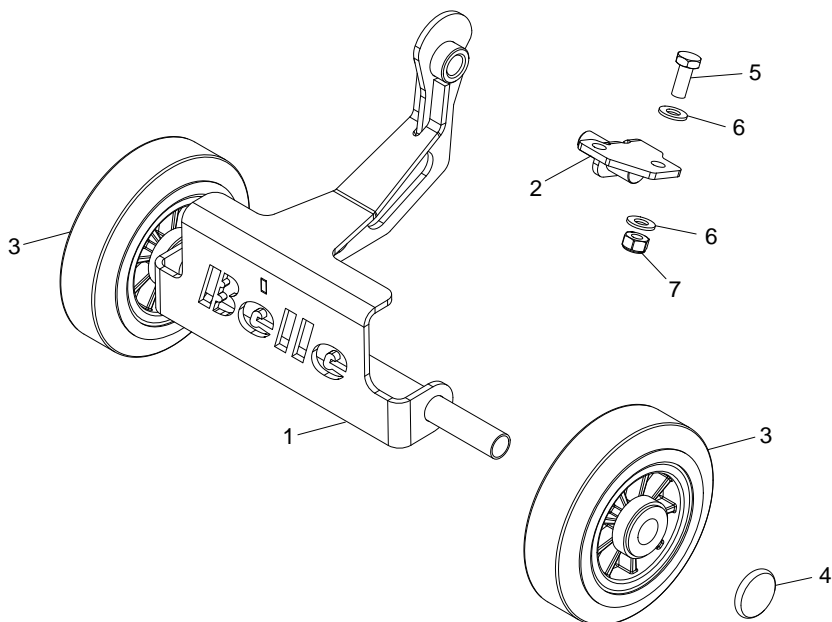


**Transporter Attachments, Fixation de transporteur,
Conexión para transportador, Conexión para transportador**

6-01

► 050570

1	943/16000 Transporter Weldment Assemblage Soude Cjto. Transportador Soldado Soldadura Do Transportador 1
		 De Transporteur			
2	943/14700 Bracket Patte de Montage Escuadra Suporte 1
3	19.0.603 Wheel Roue Rueda Roda 2
4	00011 Clip Collier Presilla Grampo 2
5	7/10005 Screw Vis Tornillo Parafuse M10 x 25
6	4/1005 Washer Rondelle Arandela Anilha M10
7	8/10006 Nut Ecrou Tuerca Porca M10

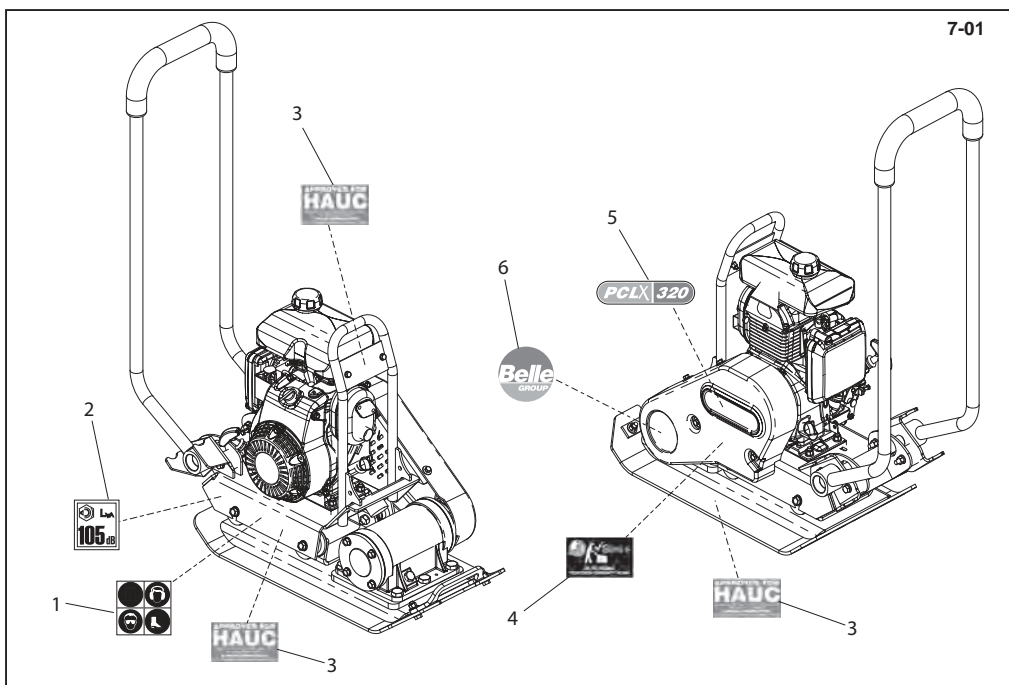


**Transporthulpstuk, Transportvorrichtungs-Halterungen,
Transportørudstyr, Trasportatore**

6-01

► 050570

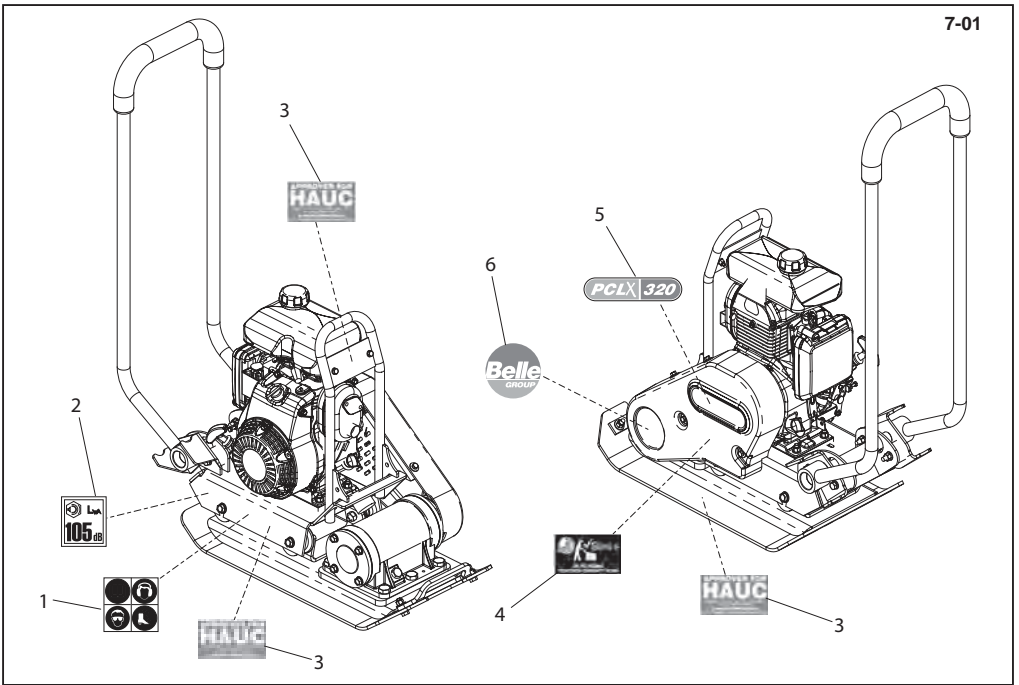
1	943/16000.....	Transportframe	Transportvorrichtung,	Transportørsvejsning	Saldatura Del Trasportatore	1	
2	943/14700.....	Steun	Schweißansatz	Beslag	Staffe	1	
3	19.0.603.....	Wiel	Rad	Hjul	Ruota	2	
4	00011.....	Klem	Clip	Klemme	Fermaglio	2	
5	7/10005.....	Schroef	Schraube	Skruer	Vite	M10 x 25	2
6	4/1005.....	Afdichtring	Scheibe	Spændeskive	Cuscinetto	M10	4
7	8/10006.....	Moer	Mutter	Møtrik	Dado	M10	2



Decals, Autocollant, Rótulo, Decalque

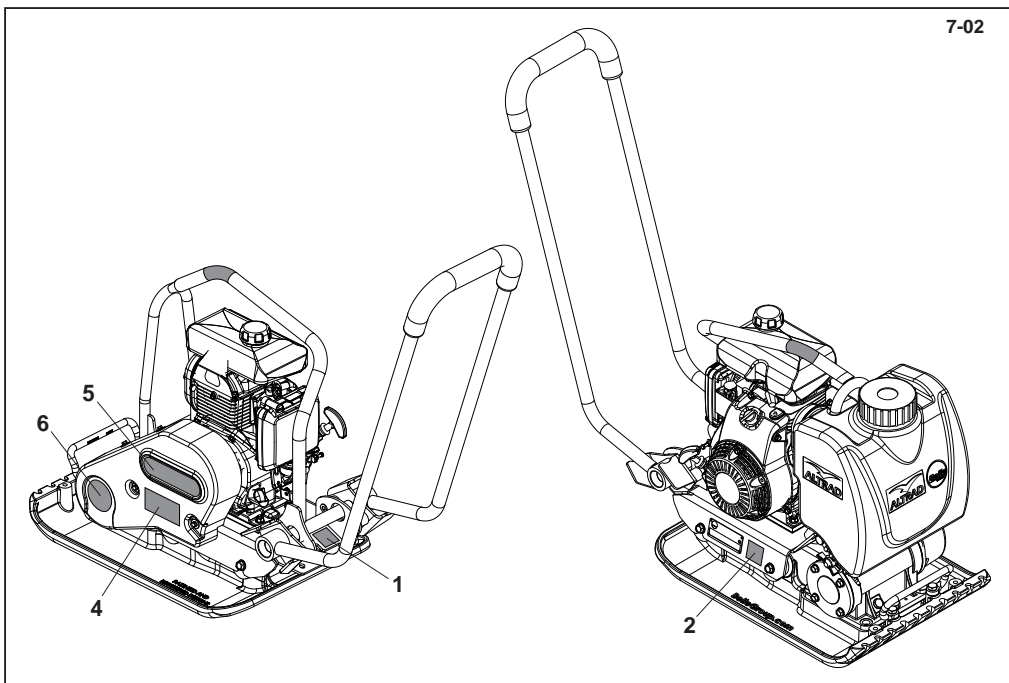
7-01

1	19.0.373 Decal Autocollant Rótulo Decalque	1
2	800/99942 Decal - Noise Autocollant - Bruits Rótulo - Ruidos Decalque - Ruído	1
3	800/99954 Decal Autocollant Rótulo Decalque HAUC	x
4	800/99959 Decal Autocollant Rótulo Decalque 8 Hrs +	1
5	800/99957 Decal Autocollant Rótulo Decalque PCLX 320	1
5	800/99958 Decal Autocollant Rótulo Decalque PCLX 400	1
6	800/00300 Decal Autocollant Rótulo Decalque Belle	1



Label, Abziehbild, Skilt, Decalcomania

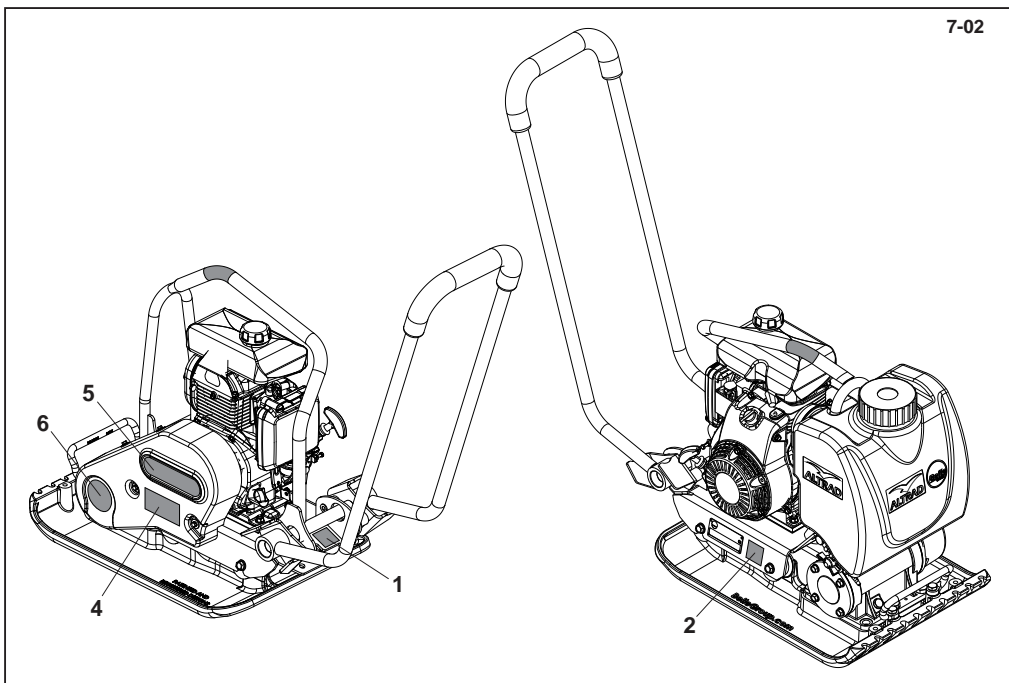
1	19.0.373	Label	Abziehbild	Skilt	Decalcomania	1
2	800/99942	Label - Guluid	Abziehbild - Geräuschpegelschild	Skilt - Skilt Støj	Decalcomania - Sulla rumorosità	1
3	800/99954	Label	Abziehbild	Skilt	Decalcomania - HAUC	x
4	800/99959	Label	Abziehbild	Skilt	Decalcomania - 8 Hrs +	1
5	800/99957	Label	Abziehbild	Skilt	Decalcomania - PCLX 320	1
5	800/99958	Label	Abziehbild	Skilt	Decalcomania - PCLX 400	1
6	800/00300	Label	Abziehbild	Skilt	Decalcomania - Belle	1



Decals, Autocollant, Rótulo, Decalque

7-02

1	19.0.373 Decal Autocollant Rótulo Decalque 1
2	800/99942 Decal - Noise Autocollant - Bruits Rótulo - Ruidos Decalque - Ruído 1
4	800/99959 Decal Autocollant Rótulo Decalque 8 Hrs + 1
5	800/99957 Decal Autocollant Rótulo Decalque PCLX 320 1
5	800/99958 Decal Autocollant Rótulo Decalque PCLX 400 1
6	800/00300 Decal Autocollant Rótulo Decalque Belle 1



Label, Abziehbild, Skilt, Decalcomania

7-02

1	19.0.373	Label	Abziehbild	Skilt	Decalcomania	1
2	800/99942	Label - Guluid	Abziehbild - Geräuschpegelschild	Skilt - Skilt Støj	Decalcomania - Sulla rumorosità	1
4	800/99959	Label	Abziehbild	Skilt	Decalcomania - 8 Hrs +	1
5	800/99957	Label	Abziehbild	Skilt	Decalcomania - PCLX 320	1
5	800/99958	Label	Abziehbild	Skilt	Decalcomania - PCLX 400	1
6	800/00300	Label	Abziehbild	Skilt	Decalcomania - Belle	1