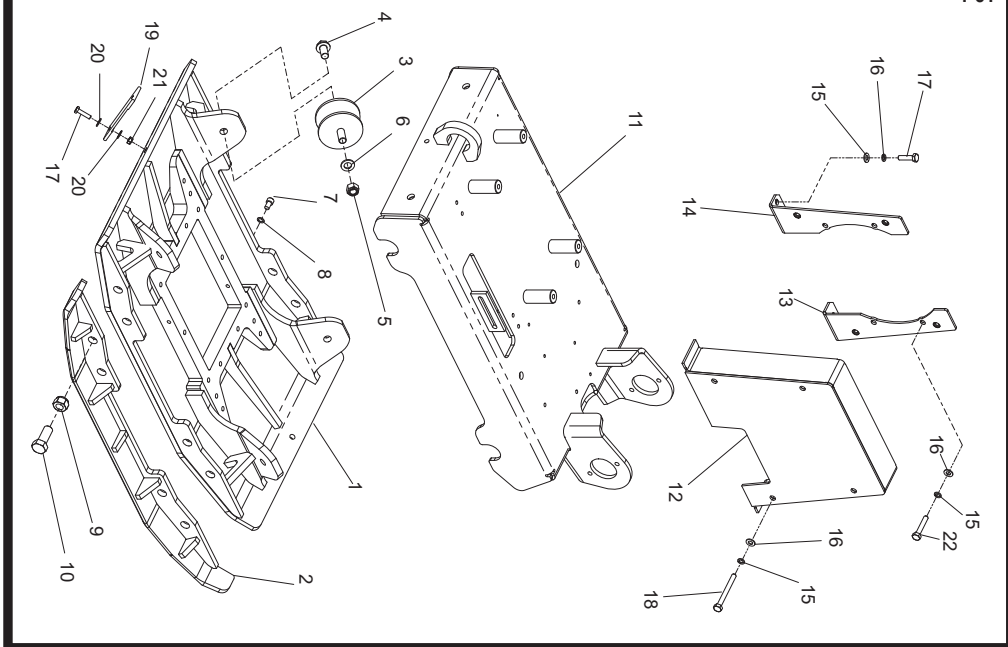


**Baseplate Assembly, Plaque d'embase,
Cto. Placa base, Conj. da Placa de Base**

→ 11/06/2007

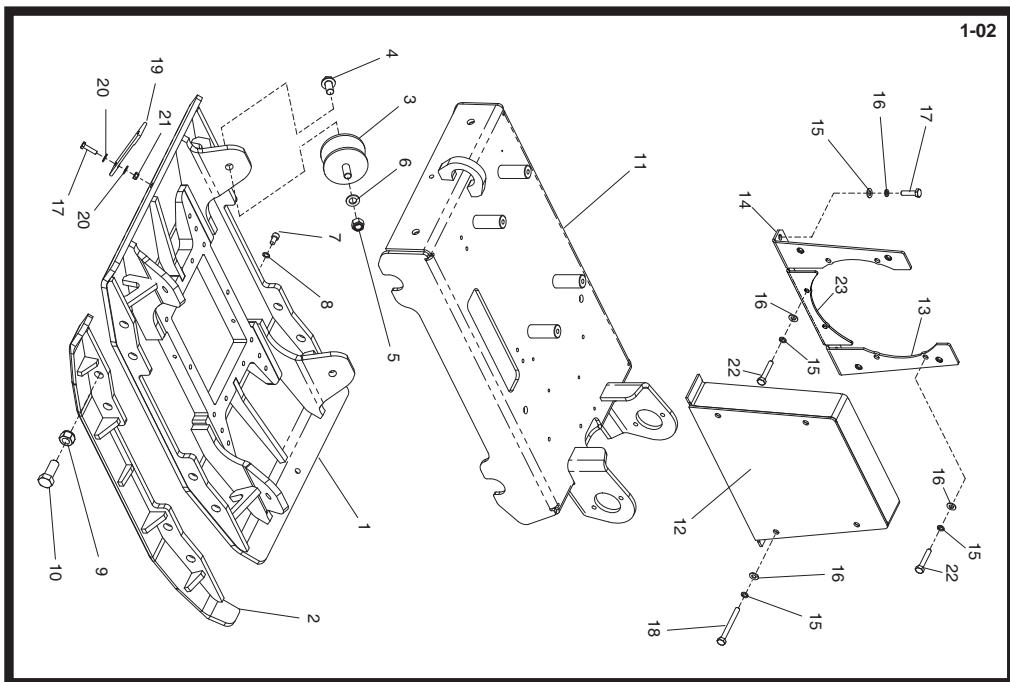
1	161/06200BaseplatePlaque d'embasePlaca de basePlaca de Base	→ 0221071
1	161/11000BaseplatePlaque d'embasePlaca de basePlaca de Base	→ 0221081
2	161/06300Baseplate - ExtensionPlaque d'embase - ExtensionPlaca de base - ExtensionPlaca de base - Extensão75mm	2
2	161/06500Baseplate - ExtensionPlaque d'embase - ExtensionPlaca de base - ExtensionPlaca de base - Extensão125mm	2
3	21/0139Anti-Vibration MountTampon antivibratoireMontura antivibratoriaBloco Anti-vibração4
4	9/16008BoltBoulonPernoPernoM16 x 30	4
5	8/16005NutEcrrouTuercaPorcaM16	4
6	4/1601WasherRondelleArandelaAnilhaM16	4
7	7/10018ScrewVisTornilloParafusoM10 x 16	1
8	4/1008WasherRondelleArandelaAnilhaM10	1
9	8/20003NutEcrrouTuercaPorcaM20	8
10	9/20002ScrewVisTornilloParafusoM20 x 50	8
11	161/04600BedplatePlaque d'assisePlaca de basePlaca de Apoio1
12	161/05500Belt GuardCapot de courroieProtector de la correaGuarda da Cinta1
13	161/25500Bracket - RightVis - DroitTornillo - DerechaParafuso - Lado Direito1
14	161/25500Bracket - LeftVis - GaucheTornillo - IzquierdaParafuso - Lado Esquerdo1
15	4/1003WasherRondelleArandelaAnilhaM10	12
16	4/1005WasherRondelleArandelaAnilhaM10	12
17	7/10009ScrewVisTornilloParafusoM10 x 40	5
18	00.0.043BoltBoulonPernoPernoM10 x 100	4
19	161/99595HandlePoigneeManillarPunho1
20	4/1004WasherRondelleArandelaAnilhaM10	8
21	8/10006NutEcrrouTuercaPorcaM10	4
22	7/10005ScrewVisTornilloParafusoM10 x 25	4



**Vloerplaat, Rüttelplatten -Zsb.,
Bundplade, Gruppo Piastra di Base**

→ 11/06/2007

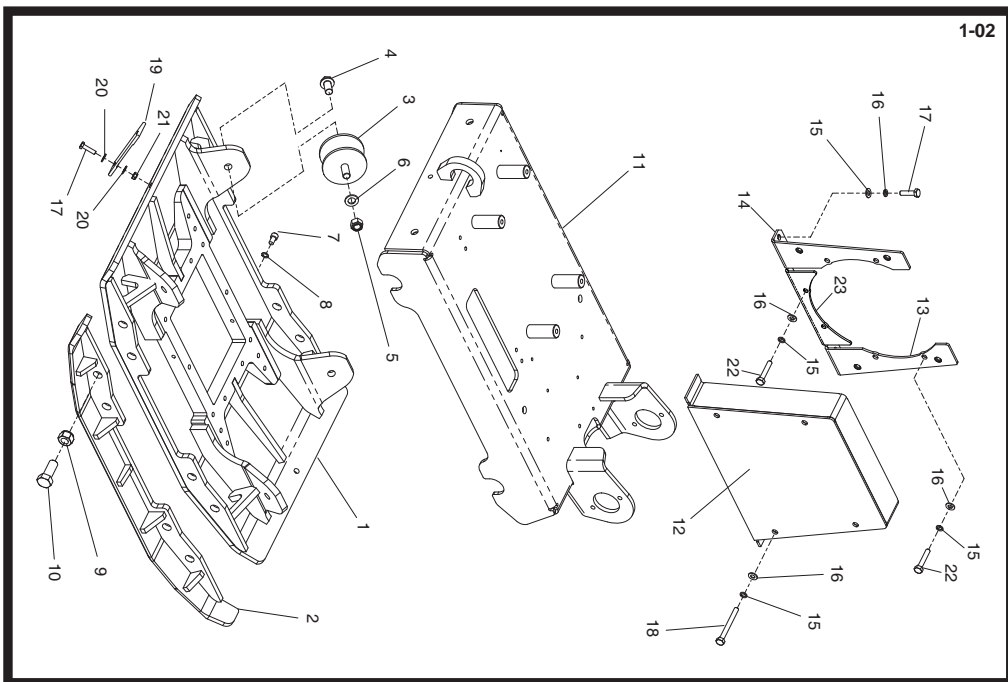
1	161/06200VloerplaatRüttelplatten	Bundplade	Piastra di Base	→ 0221071
1	161/11000VloerplaatRüttelplatten	Bundplade	Piastra di Base	→ 0221081
2	161/06300Bundplade - Tiltagende	Grundplatte - Verlängerung	Vloerplaat - Achtervoegsel	Piastra base - Estensione	75mm2
2	161/06500Bundplade - Tiltagende	Grundplatte - Verlängerung	Vloerplaat - Achtervoegsel	Piastra base - Estensione	125mm2
3	21/0139Anti-tribvestigingSchwingungsdämpfer	Antivibrationsophæng	Supporto antivibrazioni	4
4	9/16008BoutBolzen	Skru	Bullone	M16 x 304
5	8/16005MoerMutter	Motrik	Dado	M164
6	4/1601AfdichtringScheibe	Spændeskive	Rondella	M164
7	7/10018SchroefSchraube	Skru	Vite	M10 x 161
8	4/1008AfdichtringScheibe	Spændeskive	Rondella	M101
9	8/20003MoerMutter	Motrik	Dado	M208
10	9/20002SchroefSchraube	Skru	Vite	M20 x 508
11	161/04600GrundplaatSohlplatte	Fundamentplade	Piastra di base	1
12	161/05500RiembeschermkapTreibriemen-Schutzabdeckung	Rembeskyttelse	Protezione della cinghia	1
13	161/25500Steun - RechtsHalterung - Rechts	Beslag - Højre	Staffa - Lato destro	1
14	161/25500Steun - LinksHalterung - Links	Beslag - Venstre	Staffa - Lato sinistro	1
15	4/1003AfdichtringScheibe	Spændeskive	Rondella	M1012
16	4/1005AfdichtringScheibe	Spændeskive	Rondella	M1012
17	7/10009SchroefSchraube	Skru	Vite	M10 x 405
18	00.0.043BoutBolzen	Skru	Bullone	M10 x 1004
19	161/99595HendelGriff	Håndtagsenhed	Impugnatura	1
20	4/1004AfdichtringScheibe	Spændeskive	Rondella	M108
21	8/10006MoerMutter	Motrik	Dado	M104
22	7/10005SchroefSchraube	Skru	Vite	M10 x 254



**Baseplate Assembly, Plaque d'embase,
Cto. Placa base, Conj. da Placa de Base**

→ 11/06/2007 → 31/12/2008

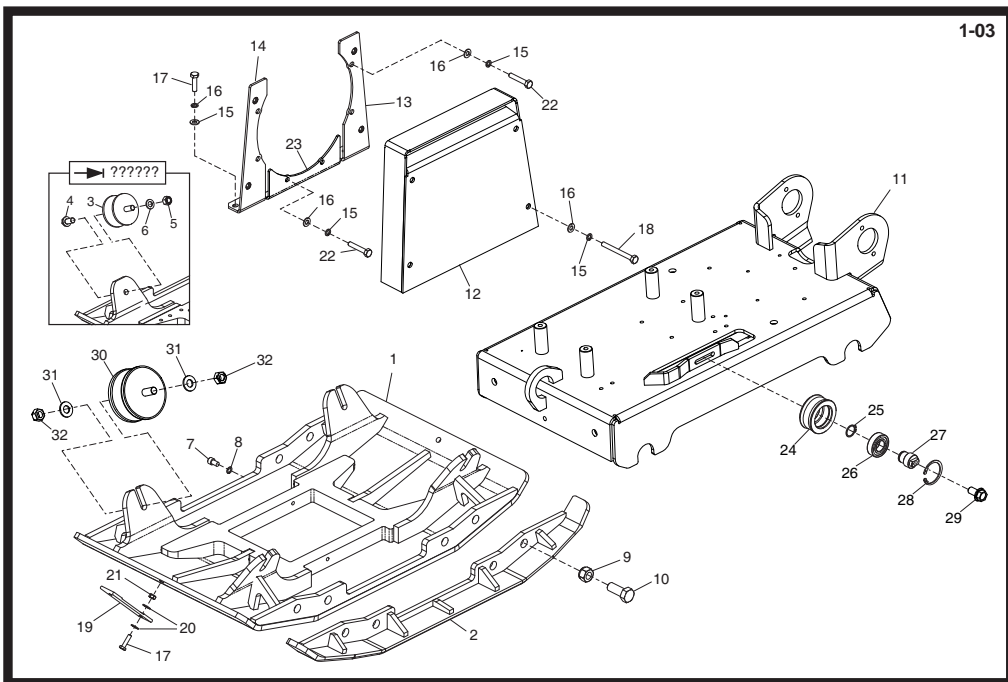
1	161/11000BaseplatePlaque d'embasePlaca de basePlaca de Base1
2	161/06300Baseplate - ExtensionPlaque d'embase - ExtensionPlaca de base - ExtensiónPlaca de base - Extensão75mm
2	161/06500Baseplate - ExtensionPlaque d'embase - ExtensionPlaca de base - ExtensiónPlaca de base - Extensão125mm
3	21/0139Anti-Vibration MountTampon antivibratoireMontura antivibratoriaBloco Anti-vibração4
4	9/16008BoltBoulonPernoPernoM16 x 30
5	8/16005NutEcrrouTuercaPorcaM16
6	4/1601WasherRondelleArandelaAnilhaM16
7	7/10018ScrewVisTornilloParafusoM10 x 16
8	4/1008WasherRondelleArandelaAnilhaM10
9	8/20003NutEcrrouTuercaPorcaM20
1	0 9/20002ScrewVisTornilloParafusoM20 x 50
11	161/23000BedplatePlaque d'assisePlaca de basePlaca de Apoio1
12	161/18000Belt GuardCapot de courroieProtector de la correaGuarda da Cinta1
13	161/25500Bracket - RightVis - DroitTornillo - DerechaParafuso - Lado Direito1
14	161/25500Bracket - LeftVis - GaucheTornillo - IzquierdaParafuso - Lado Esquerdo1
15	4/1003WasherRondelleArandelaAnilhaM10
16	4/1005WasherRondelleArandelaAnilhaM10
17	7/10009ScrewVisTornilloParafusoM10 x 40
18	00.0.043BoltBoulonPernoPernoM10 x 100
19	161/99595HandlePoigneeManillarPunho1
20	4/1004WasherRondelleArandelaAnilhaM10
21	8/10006NutEcrrouTuercaPorcaM10
22	7/10005ScrewVisTornilloParafusoM10 x 25
23	161/25500PlatePlaquePlacaPlaca1



**Vloerplaat, Rüttelplatten -Zsb.,
Bundplade, Gruppo Piastra di Base**

→ 11/06/2007 → 31/12/2008

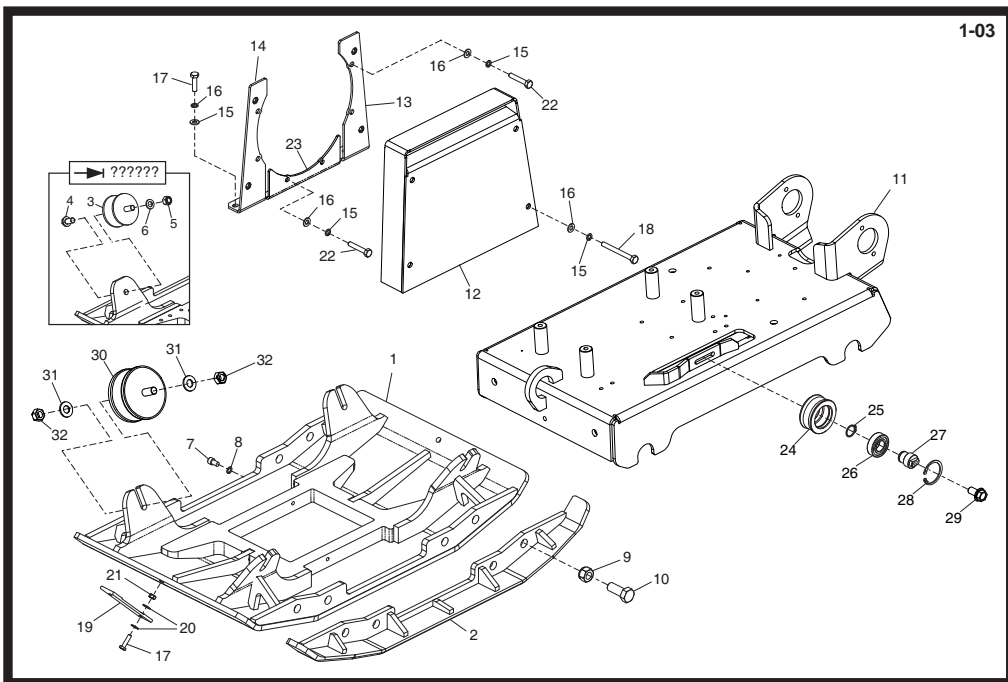
1	161/11000VloerplaatRüttelplatten	Bundplade	Piastra di Base1
2	161/06300Bundplade - Tiltagende	Grundplatte - Verlängerung	Vloerplaat - Achtervoegsel	Piastra base - Estensione	75mm
2	161/06500Bundplade - Tiltagende	Grundplatte - Verlängerung	Vloerplaat - Achtervoegsel	Piastra base - Estensione	125mm
3	21/0139Anti-trilbevestiging	Schwingungsdämpfer	Antivibrationsophæng	Supporto antivibrazioni4
4	9/16008Bout	Bolzen	Skruer	Bullone	M16 x 30
5	8/16005Moer	Mutter	Møtrik	Dado	M16
6	4/1601Afdichtring	Scheibe	Spændeskive	Rondella	M16
7	7/10018Schroef	Schraube	Skruer	Vite	M10 x 16
8	4/1008Afdichtring	Scheibe	Spændeskive	Rondella	M10
9	8/20003Moer	Mutter	Møtrik	Dado	M20
10	9/20002Schroef	Schraube	Skruer	Vite	M20 x 50
11	161/23000Grondplaat	Sohlplatte	Fundamentplade	Piastra di base1
12	161/18000Riembeschermkap	Treibriemen-Schutzabdeckung	Rembeskyttelse	Protezione della cinghia1
13	161/25500Steun - Rechts	Halterung - Rechts	Beslag - Højre	Staffa - Lato destro1
14	161/25500Steun - Links	Halterung - Links	Beslag - Venstre	Staffa - Lato sinistro1
15	4/1003Afdichtring	Scheibe	Spændeskive	Rondella	M10
16	4/1005Afdichtring	Scheibe	Spændeskive	Rondella	M10
17	7/10009Schroef	Schraube	Skruer	Vite	M10 x 40
18	00.0.043Bout	Bolzen	Skruer	Bullone	M10 x 100
19	161/99595Hendel	Griff	Håndtagsenhed	Impugnatura1
20	4/1004Afdichtring	Scheibe	Spændeskive	Rondella	M10
21	8/10006Moer	Mutter	Møtrik	Dado	M10
22	7/10005Schroef	Schraube	Skruer	Vite	M10 x 25
23	161/25500Plaat	Platte	Plade	Piastra1



**Baseplate Assembly, Plaque d'embase,
Cto. Placa base, Conj. da Placa de Base**

► 01/01/2009

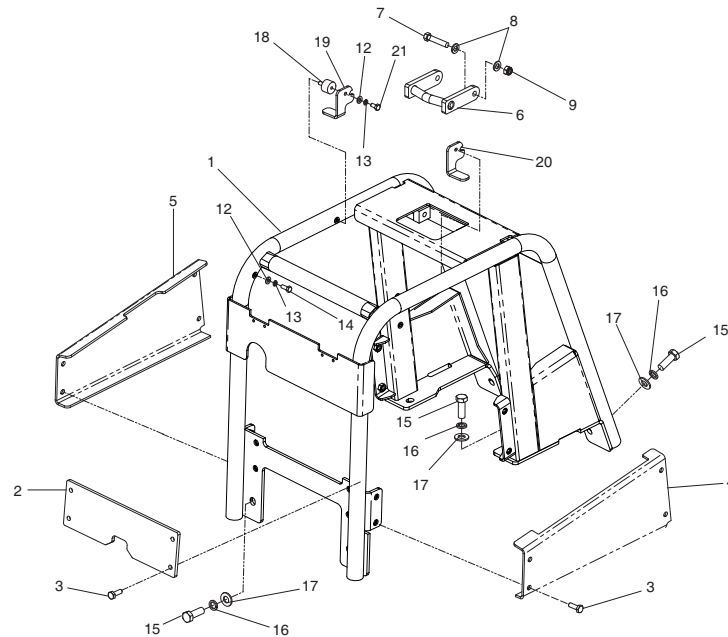
1	161/11000BaseplatePlaque d'embasePlaca de basePlaca de Base1
2	161/06300Baseplate - ExtensionPlaque d'embase - ExtensionPlaca de base - ExtensãoPlaca de base - Extensão..... 75mm2
2	161/06500Baseplate - ExtensionPlaque d'embase - ExtensionPlaca de base - ExtensãoPlaca de base - Extensão..... 125mm2
3	21/0139Anti-Vibration MountTampon antivibratoireMontura antivibratoriaBloco Anti-vibração4
4	9/16008BoltBoulonPernoPerno M16 x 304
5	8/16005NutEcrouTuercaPorca M164
6	4/1601WasherRondelleArandelaAnilha M164
7	7/10018ScrewVisTornilloParafuso M10 x 161
8	4/1008WasherRondelleArandelaAnilha M101
9	8/20003NutEcrouTuercaPorca M208
10	9/20002ScrewVisTornilloParafuso M20 x 508
11	161/23000BedplatePlaque d'assisePlaca de basePlaca de Apoio1
12	161/18000Belt GuardCapot de courroieProtector de la correaGuarda da Cinta1
13	161/25500Bracket - RightVis - DroitTornillo - DerechaParafuso - Lado Direito1
14	161/25500Bracket - LeftVis - GaucheTornillo - IzquierdaParafuso - Lado Esquerdo1
15	4/1003WasherRondelleArandelaAnilha M1014
16	4/1005WasherRondelleArandelaAnilha M1014
17	7/10009ScrewVisTornilloParafuso M10 x 405
18	00.0.043BoltBoulonPernoPerno M10 x 1004
19	161/99595HandlePoigneeManillarPunho1
20	4/1004WasherRondelleArandelaAnilha M108
21	8/10006NutEcrouTuercaPorca M104
22	7/10005ScrewVisTornilloParafuso M10 x 256
23	161/25500PlatePlaquePlacaPlaca1
24	161/99747PulleyPouliePoliaPolia1
25	3/9003CirclipCirclipResorte circularGrampo circular1
26	53/0016BearingRoulementCojineteRolamento1
27	161/99750PinGoupillePasadorPino1
28	MS22CirclipCirclipResorte circularGrampo circular1
29	7/10039ScrewVisTornilloParafuso M10 x 201
30	21/0298Anti-Vibration MountTampon antivibratoireMontura antivibratoriaBloco Anti-vibração4
31	4/1609WasherRondelleArandelaAnilha M168
32	8/16003NutEcrouTuercaPorca M168



**Vloerplaat, Ruttelplaten -Zsb.,
Bundplade, Gruppo Piastra di Base**

→ 01/01/2009

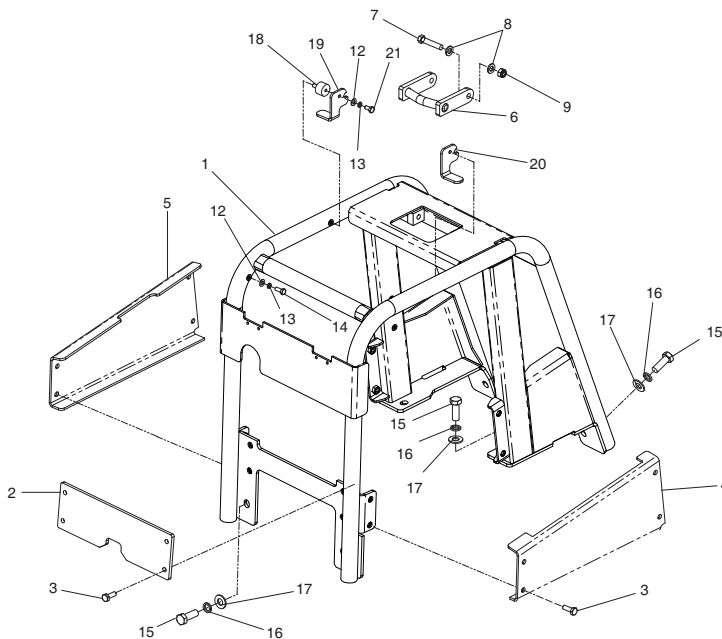
1	161/11000VloerplaatRüttelplattenBundpladePiastra di Base1
2	161/06300Bundplade - TiltagendeGrundplatte - VerlängerungVloerplaat - AchtervoegselPiastra base - Estensione75mm
2	161/06500Bundplade - TiltagendeGrundplatte - VerlängerungVloerplaat - AchtervoegselPiastra base - Estensione125mm
3	21/0139Anti-trilbevestigingSchwingungsdämpferAntivibrationsophængSupporto antivibrazioni4
4	9/16008BoutBolzenSkruerBulloneM16 x 30
5	8/16005MoerMutterMøtrikDadoM16
6	4/1601AfdichtingScheibeSpændeskiveRondellaM16
7	7/10018SchroefSchraubeSkruerViteM10 x 16
8	4/1008AfdichtingScheibeSpændeskiveRondellaM10
9	8/20003MoerMutterMøtrikDadoM20
10	9/20002SchroefSchraubeSkruerViteM20 x 50
11	161/23000GrundplaatSohlplatteFundamentpladePiastra di base1
12	161/18000RiembeschermkapTreibriemen-SchutzabdeckungRembeskyttelseProtezione della cinghia1
13	161/25500Steun - RechtsHalterung - RechtsBeslag - HøjreStaffa - Lato destro1
14	161/25500Steun - LinksHalterung - LinksBeslag - VenstreStaffa - Lato sinistro1
15	4/1003AfdichtingScheibeSpændeskiveRondellaM10
16	4/1005AfdichtingScheibeSpændeskiveRondellaM10
17	7/10009SchroefSchraubeSkruerViteM10 x 40
18	00.0.043BoutBolzenSkruerBulloneM10 x 100
19	161/99595HendelGriffHåndtagsenhedImpugnatura1
20	4/1004AfdichtingScheibeSpændeskiveRondellaM10
21	8/10006MoerMutterMøtrikDadoM10
22	7/10005SchroefSchraubeSkruerViteM10 x 25
23	161/25500PlaatPlattePladePiastra1
24	161/99747PoelieRiemscheibeRemskivePuleggia1
25	3/9003BorgveerSprengringLåseringAnello Elastico1
26	53/0016LagerLagerLøjeCuscinetto1
27	161/99750PenZapfenStiftPerno1
28	MS22BorgveerSprengringLåseringAnello Elastico1
29	7/10039SchroefSchraubeSkruerViteM10 x 20
30	21/0298Anti-trilbevestigingSchwingungsdämpferAntivibrationsophængSupporto antivibrazioni4
31	4/1609AfdichtingScheibeSpændeskiveRondellaM16
32	8/16003MoerMutterMøtrikDadoM16



**Frame Assembly, Ensemble Châssis,
Conjunto de Estrutura, Conjunto da Estrutura**

→ 043179

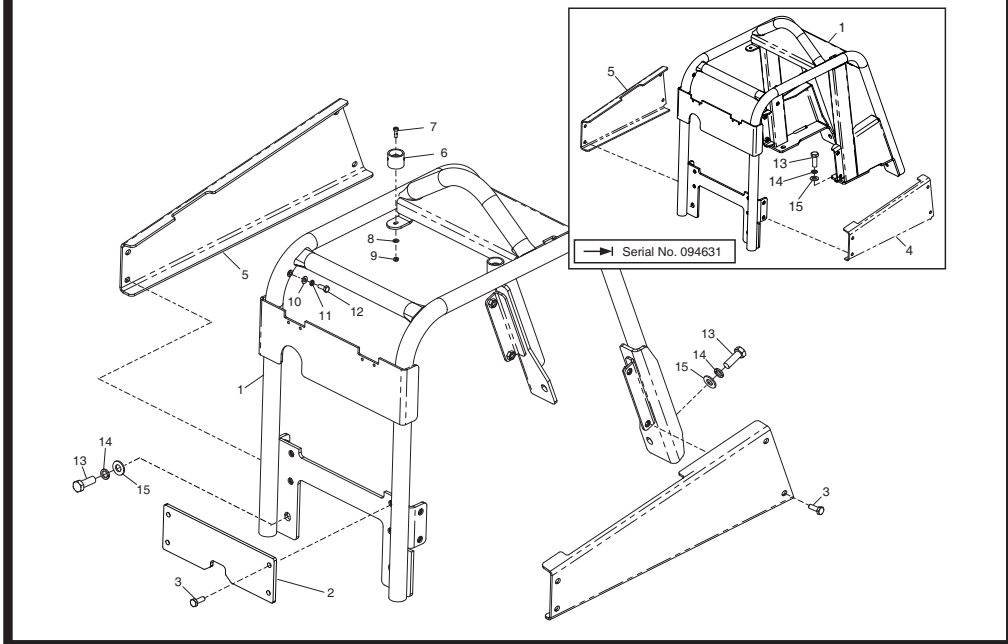
1	161/06600FrameChâssisEstructuraEstrutura	→ 031373	1
1	161/23300FrameChâssisEstructuraEstrutura	→ 031374	1
2	161/99685SFront Cover - OrangeCapot Avant - OrangeCubierta Delantera - NaranjaTampa Frontal - Laranja		1
2	161/99685GFront Cover - GreenCapot Avant - VertCubierta Delantera - VerdeTampa Frontal - Verde		1
2	161/99685YFront Cover - YellowCapot Avant - JauneCubierta Delantera - AmarilloTampa Frontal - Amarelo		1
2	161/99685BFront Cover - BlueCapot Avant - BleuCubierta Delantera - AzulTampa Frontal - Azul		1
2	161/99685RFront Cover - RedCapot Avant - RougeCubierta Delantera - RojaTampa Frontal - Vermelho		1
2	161/99685WFront Cover - WhiteCapot Avant - BlancCubierta Delantera - BlancoTampa Frontal - Branco		1
3	7/10024ScrewVisTornilloParafuseM10 x 30		12
4	161/99686SCover - Orange (Left)Couvercle - Orange (Gauche)Cubierta - Naranja (Izquierda)Tampa - Laranja (Lado Esquedo)		1
4	161/99686GCover - Green (Left)Couvercle - Grun (Gauche)Cubierta - Verde (Izquierda)Tampa - Verde (Lado Esquedo)		1
4	161/99686YCover - Yellow (Left)Couvercle - Jaune (Gauche)Cubierta - Amarillo (Izquierda)Tampa - Amarelo (Lado Esquedo)		1
4	161/99686BCover - Blue (Left)Couvercle - Bleu (Gauche)Cubierta - Azul (Izquierda)Tampa - Azul (Lado Esquedo)		1
4	161/99686RCover - Red (Left)Couvercle - Rouge (Gauche)Cubierta - Roja (Izquierda)Tampa - Vermelho (Lado Esquedo)		1
4	161/99686WCover - White (Left)Couvercle - Blanc (Gauche)Cubierta - Blanco (Izquierda)Tampa - Branco (Lado Esquedo)		1
5	161/99687SCover - Orange (Right)Couvercle - Orange (Droit)Cubierta - Naranja (Derecha)Tampa - Laranja (Lado Direito)		1
5	161/99687GCover - Green (Right)Couvercle - Grun (Droit)Cubierta - Verde (Derecha)Tampa - Verde (Lado Direito)		1
5	161/99687YCover - Yellow (Right)Couvercle - Jaune (Droit)Cubierta - Amarillo (Derecha)Tampa - Amarelo (Lado Direito)		1
5	161/99687BCover - Blue (Right)Couvercle - Bleu (Droit)Cubierta - Azul (Derecha)Tampa - Azul (Lado Direito)		1
5	161/99687RCover - Red (Right)Couvercle - Rouge (Droit)Cubierta - Roja (Derecha)Tampa - Vermelho (Lado Direito)		1
5	161/99687WCover - White (Right)Couvercle - Blanc (Droit)Cubierta - Blanco (Derecha)Tampa - Branco (Lado Direito)		1
6	161/06700HookCrochetGanchoGancho		1
7	00.0.050ScrewVisTornilloParafuseM12 x 60		2
8	4/1204WasherRondelleArandelaAnilhaM12		4
9	8/12006NutEccrouTuercasPorcasM12		2
12	4/8006WasherRondelleArandelaAnilhaM8		3
13	4/8003WasherRondelleArandelaAnilhaM8		3
14	7/8011BoltBoulonPernoPernoM8 x 20		1
15	02.0.062ScrewVisTornilloParafuseM16 x 45		6
16	05.1.009WasherRondelleArandelaAnilhaM16		6
17	4/1609WasherRondelleArandelaAnilhaM16		6
18	21/0141Anti-Vibration MountMonton antivibratoireMontura antivibratoriaBloco Anti-vibração		2
19	161/99581LatchVerrouCerrojoTrinco		1
20	161/99582LatchVerrouCerrojoTrinco		1
21	7/8008ScrewVisTornilloParafuseM8 x 16		2



Frame, Rahmen kpl., Hovedtel og Dæksel, Gruppo Telaio

→ 043179

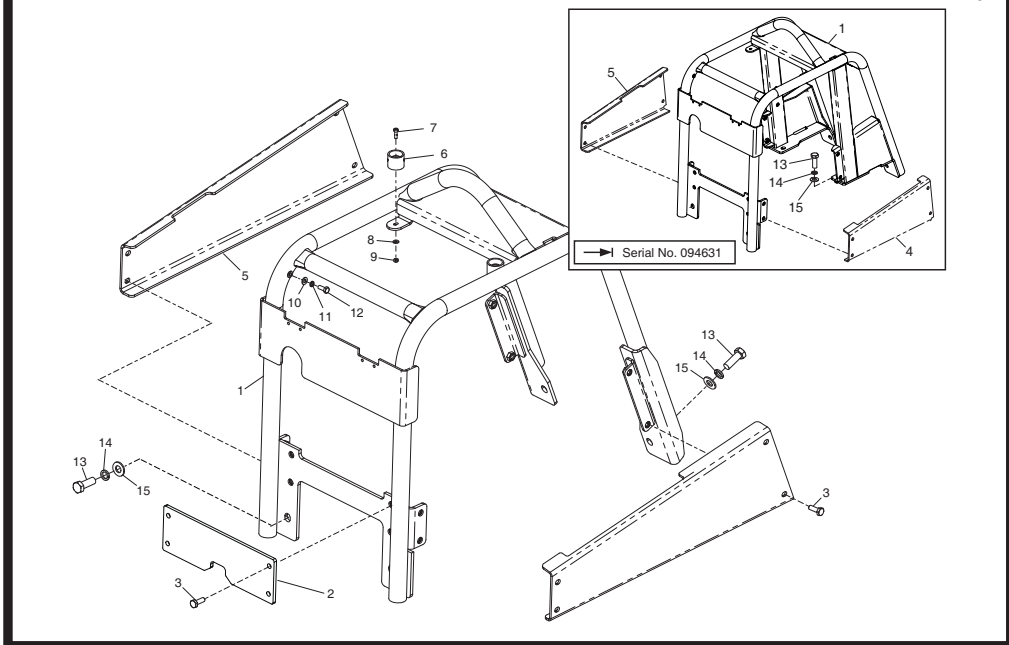
1	161/06600FrameRahmenHovedstelTelaio	→ 031373	1
1	161/23300FrameRahmenHovedstelTelaio	→ 031374	1
1	161/99685S	...Voordeksel - Oranje	...Frontabdeckung - Orange	...Forreste kappe - Orange	...Copertura anteriore - Arancione		1
2	161/99685G	...Voordeksel - Groen	...Frontabdeckung - Grün	...Forreste kappe - Grøn	...Copertura anteriore - Verde		1
2	161/99685Y	...Voordeksel - Geel	...Frontabdeckung - Gelb	...Forreste kappe - Gul	...Copertura anteriore - Giallo		1
2	161/99685B	...Voordeksel - Blauw	...Frontabdeckung - Blau	...Forreste kappe - Blå	...Copertura anteriore - Blu		1
2	161/99685R	...Voordeksel - Rood	...Frontabdeckung - Rot	...Forreste kappe - Rød	...Copertura anteriore - Rosso		1
2	161/99685W	...Voordeksel - Wit	...Frontabdeckung - Weiß	...Forreste kappe - Hvid	...Copertura anteriore - Bianco		1
3	7/10024SchroefSchraubeSkruerVite	M10 x 30	12
4	161/99686SDæksel - Oranje(Links)Abdeckung - Orange (Links)Dæk - Orange (Venstre)Coperchio - Arancione (Lato sinistro)		1
4	161/99686GDæksel - Groen (Links)Abdeckung - Grün (Links)Dæk - Grøn (Venstre)Coperchio - Verde (Lato sinistro)		1
4	161/99686YDæksel - Geel (Links)Abdeckung - Gelb (Links)Dæk - Gul (Venstre)Coperchio - Giallo (Lato sinistro)		1
4	161/99686BDæksel - Blauw (Links)Abdeckung - Blau (Links)Dæk - Blå (Venstre)Coperchio - Blu (Lato sinistro)		1
4	161/99686RDæksel - Rood (Links)Abdeckung - Rot (Links)Dæk - Rød (Venstre)Coperchio - Rosso (Lato sinistro)		1
4	161/99686WDæksel - Wit (Links)Abdeckung - Weiß (Links)Dæk - Hvid (Venstre)Coperchio - Bianco (Lato sinistro)		1
5	161/99687SDæksel - Oranje (Rechts)Abdeckung - Orange (Rechts)Dæk - Orange (Højre)Coperchio - Arancione(Lato destro)		1
5	161/99687GDæksel - Groen (Rechts)Abdeckung - Grün (Rechts)Dæk - Grøn (Højre)Coperchio - Verde (Lato destro)		1
5	161/99687YDæksel - Geel (Rechts)Abdeckung - Gelb (Rechts)Dæk - Gul (Højre)Coperchio - Giallo (Lato destro)		1
5	161/99687BDæksel - Blauw (Rechts)Abdeckung - Blau (Rechts)Dæk - Blå (Højre)Coperchio - Blu (Lato destro)		1
5	161/99687RDæksel - Rood (Rechts)Abdeckung - Rot (Rechts)Dæk - Rød (Højre)Coperchio - Rosso (Lato destro)		1
5	161/99687WDæksel - Wit (Rechts)Abdeckung - Weiß (Rechts)Dæk - Hvid (Højre)Coperchio - Bianco (Lato destro)		1
6	161/06700HaakjeHakenMadekrogGancio		1
7	00.0.050SchroefSchraubeSkruerVite	M12 x 60	2
8	4/1204AfdichtringScheibeSpændeskiveRondella	M12	4
9	8/12006MoerMutterMøtrikDado	M12	2
12	4/8006AfdichtringScheibeSpændeskiveRondella	M8	3
13	4/8003AfdichtringScheibeSpændeskiveRondella	M8	3
14	7/8011BoutenBolzenSkruboltBulloni	M8 x 20	1
15	02.0.062SchroefSchraubeSkruerVite	M16 x 45	6
16	05.1.009AfdichtringScheibeSpændeskiveRondella	M16	6
17	4/1609AfdichtringScheibeSpændeskiveRondella	M16	6
18	21/0141Anti-tribevestigingSchwingungsdämpferAntivibrationsophængSupporto antivibrazioni		2
19	161/99581AfdichtringScheibeSpændeskiveRondella		1
20	161/99582AfdichtringScheibeSpændeskiveRondella		1
21	7/8008SchroefSchraubeSkruerVite	M8 x 16	2



**Frame Assembly, Ensemble Châssis,
Conjunto de Estrutura, Conjunto da Estrutura**

► 043180

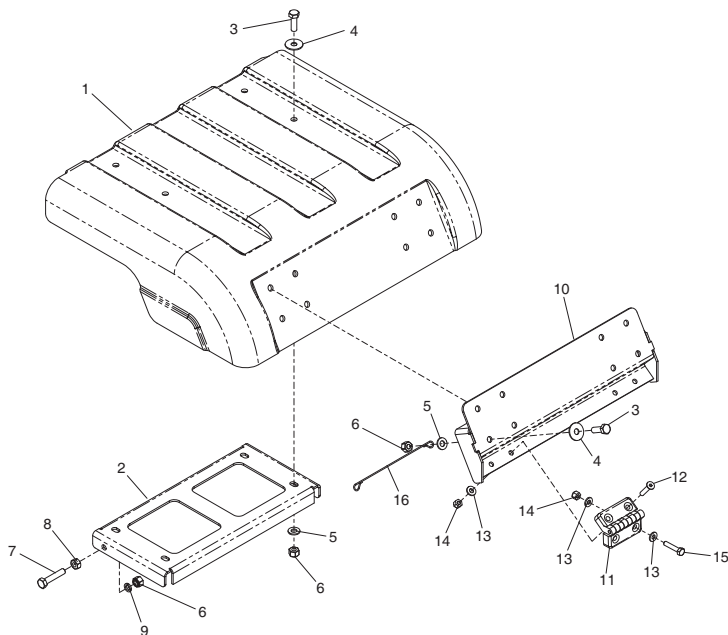
1	161/23300FrameChâssisEstruturaEstrutura► 094631	1
1	161/25300FrameChâssisEstruturaEstrutura► 094632	1
2	161/99685SFront Cover - OrangeCapot Avant - OrangeCubierta Delantera - NaranjaTampa Frontal - Laranja	1
2	161/99685GFront Cover - GreenCapot Avant - VertCubierta Delantera - VerdeTampa Frontal - Verde	1
2	161/99685YFront Cover - YellowCapot Avant - JauneCubierta Delantera - AmarilloTampa Frontal - Amarelo	1
2	161/99685BFront Cover - BlueCapot Avant - BleuCubierta Delantera - AzulTampa Frontal - Azul	1
2	161/99685RFront Cover - RedCapot Avant - RougeCubierta Delantera - RojaTampa Frontal - Vermelho	1
2	161/99685WFront Cover - WhiteCapot Avant - BlancCubierta Delantera - BlancoTampa Frontal - Branco	1
3	7/10024ScrewVisTornilloParafuseM10 x 30	12
4	161/99686SCover - Orange (Left)Couvercle - Orange (Gauche)Cubierta - Naranja (Izquierda)Tampa - Laranja (Lado Esquero)► 094631	1
4	161/99686GCover - Green (Left)Couvercle - Grun (Gauche)Cubierta - Verde (Izquierda)Tampa - Verde (Lado Esquero)► 094631	1
4	161/99686YCover - Yellow (Left)Couvercle - Jaune (Gauche)Cubierta - Amarillo (Izquierda)Tampa - Amarelo (Lado Esquero)► 094631	1
4	161/99686BCover - Blue (Left)Couvercle - Bleu (Gauche)Cubierta - Azul (Izquierda)Tampa - Azul (Lado Esquero)► 094631	1
4	161/99686RCover - Red (Left)Couvercle - Rouge (Gauche)Cubierta - Roja (Izquierda)Tampa - Vermelho (Lado Esquero)► 094631	1
4	161/99686WCover - White (Left)Couvercle - Blanc (Gauche)Cubierta - Blanco (Izquierda)Tampa - Branco (Lado Esquero)► 094631	1
4	161/99753SCover - Orange (Left)Couvercle - Orange (Gauche)Cubierta - Naranja (Izquierda)Tampa - Laranja (Lado Esquero)► 094632	1
4	161/99753GCover - Green (Left)Couvercle - Grun (Gauche)Cubierta - Verde (Izquierda)Tampa - Verde (Lado Esquero)► 094632	1
4	161/99753YCover - Yellow (Left)Couvercle - Jaune (Gauche)Cubierta - Amarillo (Izquierda)Tampa - Amarelo (Lado Esquero)► 094632	1
4	161/99753BCover - Blue (Left)Couvercle - Bleu (Gauche)Cubierta - Azul (Izquierda)Tampa - Azul (Lado Esquero)► 094632	1
4	161/99753RCover - Red (Left)Couvercle - Rouge (Gauche)Cubierta - Roja (Izquierda)Tampa - Vermelho (Lado Esquero)► 094632	1
4	161/99753WCover - White (Left)Couvercle - Blanc (Gauche)Cubierta - Blanco (Izquierda)Tampa - Branco (Lado Esquero)► 094632	1
5	161/99687SCover - Orange (Right)Couvercle - Orange (Droit)Cubierta - Naranja (Derecha)Tampa - Laranja (Lado Direito)► 094631	1
5	161/99687GCover - Green (Right)Couvercle - Grun (Droit)Cubierta - Verde (Derecha)Tampa - Verde (Lado Direito)► 094631	1
5	161/99687YCover - Yellow (Right)Couvercle - Jaune (Droit)Cubierta - Amarillo (Derecha)Tampa - Amarelo (Lado Direito)► 094631	1
5	161/99687BCover - Blue (Right)Couvercle - Bleu (Droit)Cubierta - Azul (Derecha)Tampa - Azul (Lado Direito)► 094631	1
5	161/99687RCover - Red (Right)Couvercle - Rouge (Droit)Cubierta - Roja (Derecha)Tampa - Vermelho (Lado Direito)► 094631	1
5	161/99687WCover - White (Right)Couvercle - Blanc (Droit)Cubierta - Blanco (Derecha)Tampa - Branco (Lado Direito)► 094631	1
5	161/99752SCover - Orange (Right)Couvercle - Orange (Droit)Cubierta - Naranja (Derecha)Tampa - Laranja (Lado Direito)► 094632	1
5	161/99752GCover - Green (Right)Couvercle - Grun (Droit)Cubierta - Verde (Derecha)Tampa - Verde (Lado Direito)► 094632	1
5	161/99752YCover - Yellow (Right)Couvercle - Jaune (Droit)Cubierta - Amarillo (Derecha)Tampa - Amarelo (Lado Direito)► 094632	1
5	161/99752BCover - Blue (Right)Couvercle - Bleu (Droit)Cubierta - Azul (Derecha)Tampa - Azul (Lado Direito)► 094632	1
5	161/99752RCover - Red (Right)Couvercle - Rouge (Droit)Cubierta - Roja (Derecha)Tampa - Vermelho (Lado Direito)► 094632	1
5	161/99752WCover - White (Right)Couvercle - Blanc (Droit)Cubierta - Blanco (Derecha)Tampa - Branco (Lado Direito)► 094632	1
6	72/0003SocketPrisseEnchufeTomada	1
7	7/6003ScrewVisTornilloParafuseM6 x 20	2
8	4/6007WasherRondelleArandelaAnilhaM6	2
9	8/6007NutEcrouTuercaPorcaM6	2
10	4/8006WasherRondelleArandelaAnilhaM8	3
11	4/8003WasherRondelleArandelaAnilhaM8	3
12	7/8011BoltBoulonPernoPernoM8 x 20	1
13	02.0.062ScrewVisTornilloParafuseM16 x 45	6
14	05.1.009WasherRondelleArandelaAnilhaM16	6
15	4/1609WasherRondelleArandelaAnilhaM16	6



Frame, Rahmen kpl., Hovedtel og Dæksel, Gruppo Telaio

→ 043180

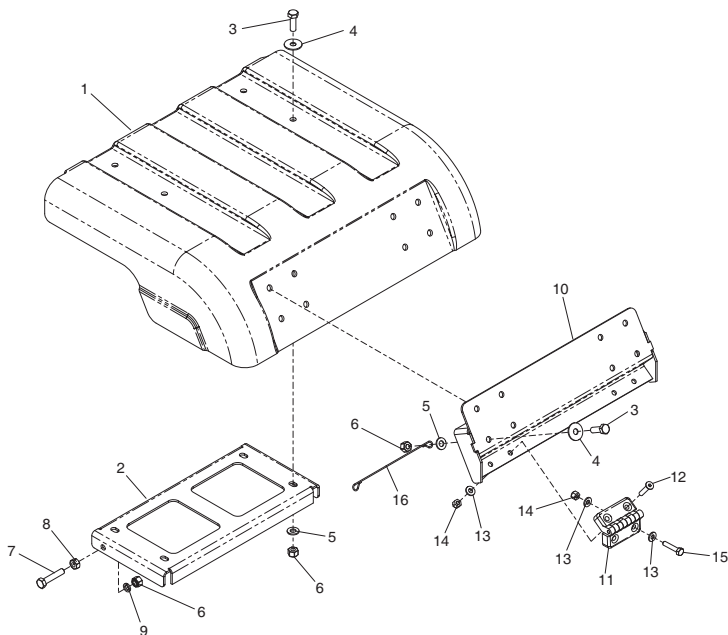
1	161/23300FrameRahmenHovedstelTelaio→ 094631	1
1	161/25300FrameRahmenHovedstelTelaio→ 094632	1
1	161/99685SVoordeksel - OranjeFrontabdeckung - OrangeForreste kappe - OranjeCopertura anteriore - Arancione		1
2	161/99685GVoordeksel - GroenFrontabdeckung - GrünForreste kappe - GrønCopertura anteriore - Verde		1
2	161/99685YVoordeksel - GeelFrontabdeckung - GelbForreste kappe - GulCopertura anteriore - Giallo		1
2	161/99685BVoordeksel - BlauwFrontabdeckung - BlauForreste kappe - BlåCopertura anteriore - Blu		1
2	161/99685RVoordeksel - RoodFrontabdeckung - RotForreste kappe - RodCopertura anteriore - Rosso		1
2	161/99685WVoordeksel - WitFrontabdeckung - WeißForreste kappe - HvidCopertura anteriore - Bianco		1
3	7/10024SchroefSchraubeSkrueViteM10 x 30	12
4	161/99686SDæksel - Oranje(Links)Abdeckung - Orange (Links)Dæk - Orange (Venstre)Coperchio - Arancione (Lato sinistro)→ 094631	1
4	161/99686GDæksel - Groen(Links)Abdeckung - Grün (Links)Dæk - Grøn (Venstre)Coperchio - Verde (Lato sinistro)→ 094631	1
4	161/99686YDæksel - Geel(Links)Abdeckung - Gelb (Links)Dæk - Gul (Venstre)Coperchio - Giallo (Lato sinistro)→ 094631	1
4	161/99686BDæksel - Blauw(Links)Abdeckung - Blau (Links)Dæk - Blå (Venstre)Coperchio - Blu (Lato sinistro)→ 094631	1
4	161/99686RDæksel - Rood(Links)Abdeckung - Rot (Links)Dæk - Rød (Venstre)Coperchio - Rosso (Lato sinistro)→ 094631	1
4	161/99686WDæksel - Wit(Links)Abdeckung - Weiß (Links)Dæk - Hvid (Venstre)Coperchio - Bianco (Lato sinistro)→ 094631	1
4	161/99753SDæksel - Oranje(Links)Abdeckung - Orange (Links)Dæk - Orange (Venstre)Coperchio - Arancione (Lato sinistro)→ 094632	1
4	161/99753GDæksel - Groen(Links)Abdeckung - Grün (Links)Dæk - Grøn (Venstre)Coperchio - Verde (Lato sinistro)→ 094632	1
4	161/99753YDæksel - Geel(Links)Abdeckung - Gelb (Links)Dæk - Gul (Venstre)Coperchio - Giallo (Lato sinistro)→ 094632	1
4	161/99753BDæksel - Blauw(Links)Abdeckung - Blau (Links)Dæk - Blå (Venstre)Coperchio - Blu (Lato sinistro)→ 094632	1
4	161/99753RDæksel - Rood(Links)Abdeckung - Rot (Links)Dæk - Rød (Venstre)Coperchio - Rosso (Lato sinistro)→ 094632	1
4	161/99753WDæksel - Wit(Links)Abdeckung - Weiß (Links)Dæk - Hvid (Venstre)Coperchio - Bianco (Lato sinistro)→ 094632	1
4	161/99687SDæksel - Oranje (Rechts)Abdeckung - Orange (Rechts)Dæk - Orange (Højre)Coperchio - Arancione(Lato destro)→ 094631	1
5	161/99687GDæksel - Groen (Rechts)Abdeckung - Grün (Rechts)Dæk - Grøn (Højre)Coperchio - Verde (Lato destro)→ 094631	1
5	161/99687YDæksel - Geel (Rechts)Abdeckung - Gelb (Rechts)Dæk - Gul (Højre)Coperchio - Giallo (Lato destro)→ 094631	1
5	161/99687BDæksel - Blauw (Rechts)Abdeckung - Blau (Rechts)Dæk - Blå (Højre)Coperchio - Blu (Lato destro)→ 094631	1
5	161/99687RDæksel - Rood (Rechts)Abdeckung - Rot (Rechts)Dæk - Rød (Højre)Coperchio - Rosso (Lato destro)→ 094631	1
5	161/99687WDæksel - Wit (Rechts)Abdeckung - Weiß (Rechts)Dæk - Hvid (Højre)Coperchio - Bianco (Lato destro)→ 094631	1
5	161/99752SDæksel - Oranje (Rechts)Abdeckung - Orange (Rechts)Dæk - Orange (Højre)Coperchio - Arancione(Lato destro)→ 094632	1
5	161/99752GDæksel - Groen (Rechts)Abdeckung - Grün (Rechts)Dæk - Grøn (Højre)Coperchio - Verde (Lato destro)→ 094632	1
5	161/99752YDæksel - Geel (Rechts)Abdeckung - Gelb (Rechts)Dæk - Gul (Højre)Coperchio - Giallo (Lato destro)→ 094632	1
5	161/99752BDæksel - Blauw (Rechts)Abdeckung - Blau (Rechts)Dæk - Blå (Højre)Coperchio - Blu (Lato destro)→ 094632	1
5	161/99752RDæksel - Rood (Rechts)Abdeckung - Rot (Rechts)Dæk - Rød (Højre)Coperchio - Rosso (Lato destro)→ 094632	1
5	161/99752WDæksel - Wit (Rechts)Abdeckung - Weiß (Rechts)Dæk - Hvid (Højre)Coperchio - Bianco (Lato destro)→ 094632	1
6	72/0003Mof.BuchsenausführungStikdåsePresa→ 094632	1
7	7/6003SchroefSchraubeSkrueViteM6 x 20	2
8	4/6007AfdichtingScheibeSpændeskiveRondellaM6	2
9	8/6007MoerMutterMøtrikDadoM6	2
10	4/8006AfdichtingScheibeSpændeskiveRondellaM8	3
11	4/8003AfdichtingScheibeSpændeskiveRondellaM8	3
12	7/8011BoutenBolzenSkruboltBulloniM8 x 20	1
13	02.0.062SchroefSchraubeSkrueViteM16 x 45	6
14	05.1.009AfdichtingScheibeSpændeskiveRondellaM16	6
15	4/1609AfdichtingScheibeSpændeskiveRondellaM16	6



Top Cover, Couvercle Sup, Cubierta - Parte Superior, Tampa Superior

→ 043179

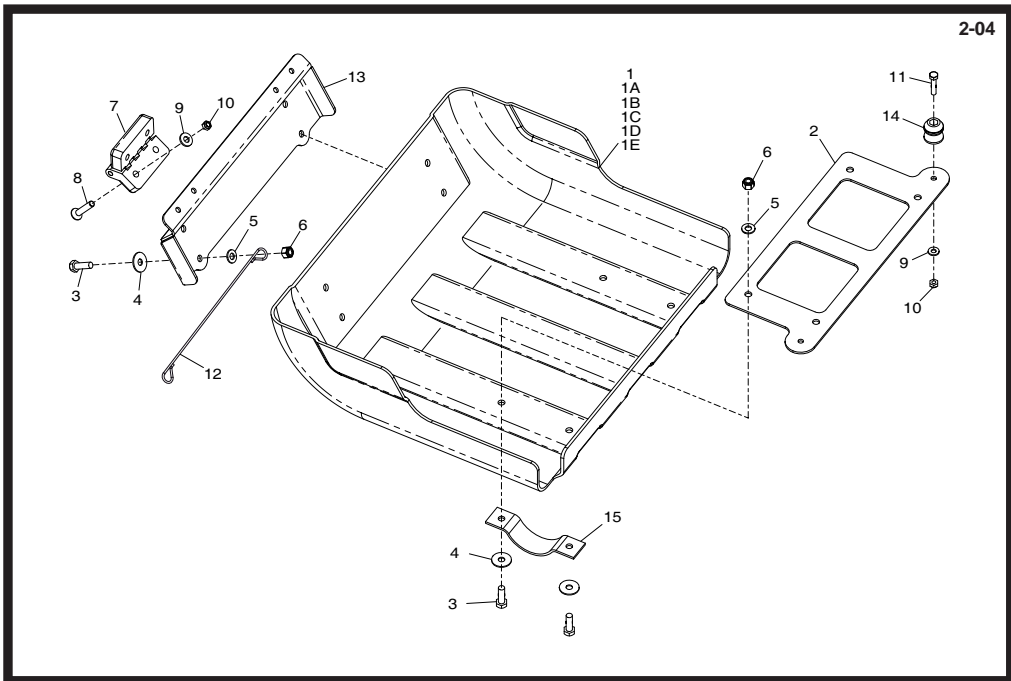
1	161/99688S ...Cover - Orange.....	Couvercle - Orange	Cubierta - Naranja	Tampa - Laranja	1
1	161/99688G ...Cover - Green.....	Couvercle - Grun	Cubierta - Verde	Tampa - Verde	1
1	161/99688Y ...Cover - Yellow.....	Couvercle - Jaune.....	Cubierta - Amarillo	Tampa - Amarelo	1
1	161/99688B ...Cover - Blue.....	Couvercle - Bleu	Cubierta - Azul.....	Tampa - Azul	1
1	161/99688R ...Cover - Red.....	Couvercle - Rouge.....	Cubierta - Roja	Tampa - Vermelho	1
1	161/99688W ...Cover - White.....	Couvercle - Blanc	Cubierta - Blanco.....	Tampa - Branco	1
2	161/99568Bracket	Patte du Montage	Escuadra	Suporte	1
3	7/8012Bolt	Boulon.....	Perno	Perno.....	M8 x 25
4	4/8008Washer	Rondelle.....	Arandela.....	Anilha.....	5/16" x 1"
5	4/8006Washer	Rondelle.....	Arandela	Anilha.....	M8.....
6	8/8008Nut	Ecrou	Tuerca	Porca	M8.....
7	9/8014Bolt	Boulon.....	Perno	Perno.....	M8 x 50
8	8/8001Nut	Ecrou	Tuerca	Porca	M8.....
9	4/8003Washer	Rondelle.....	Arandela.....	Anilha.....	M8.....
10	161/01800.....Bracket	Patte du Montage	Escuadra	Suporte	1
11	161/99573.....Hinge	Charnière	Bisagra	Dobradiça	1
12	7/6030Screw	Vis	Tornillo	Parafuse	M6 x 30
13	4/6007Washer	Rondelle.....	Arandela	Anilha.....	M6.....
14	8/6007Nut	Ecrou	Tuerca	Porca	M6.....
15	02.0.017.....Screw	Vis	Tornillo	Parafuse	M6 x 30
16	914/25303.....Cable	Câble	Cable	Cable	1



Deksel - Boven, Abdeckung - Oberteil, Dæk - Øverste, Coperchio Sommita

→ 043179

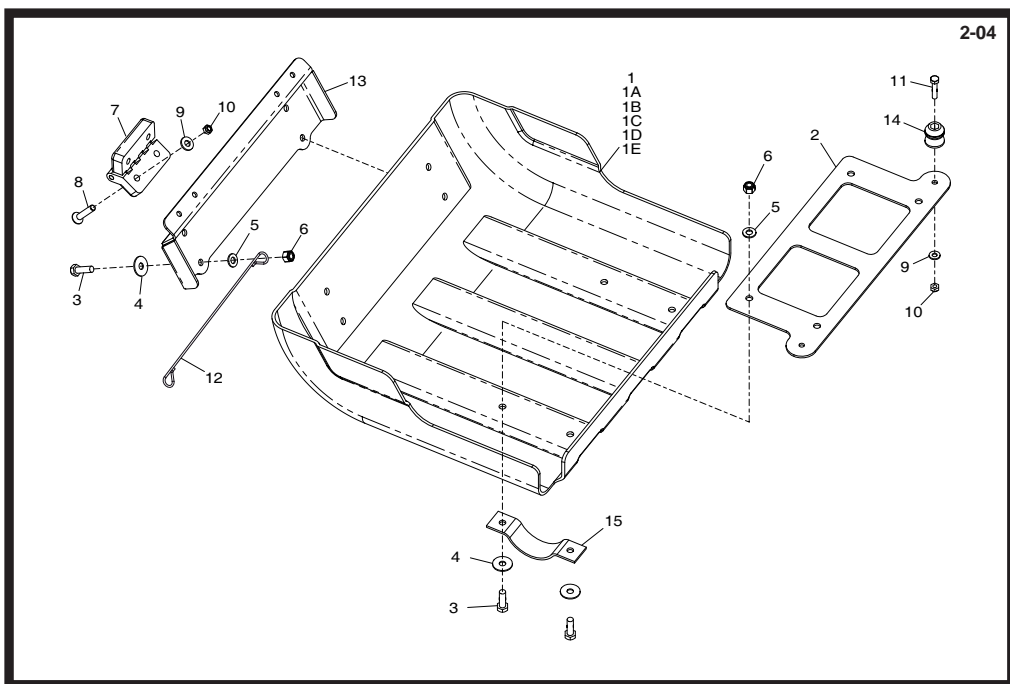
1	161/99688S ..Deksel - Oranje	Abdeckung - Orange	Dæk - Oranje	Coperchio - Arancione	1		
1	161/99688G ..Deksel - Groen	Abdeckung - Grün	Dæk - Grøn	Coperchio - Verde	1		
1	161/99688Y ..Deksel - Geel	Abdeckung - Gelb	Dæk - Gul	Coperchio - Giallo	1		
1	161/99688B ..Deksel - Blauw	Abdeckung - Blau	Dæk - Blå	Coperchio - Blu	1		
1	161/99688R ..Deksel - Rood	Abdeckung - Rot	Dæk - Rød	Coperchio - Rosso	1		
1	161/99688W ..Deksel - Wit	Abdeckung - Weiß	Dæk - Hvid	Coperchio - Bianco	1		
2	161/99568	Steun	Halterung	Staffa	1		
3	7/8012	Bouten	Bolzen	Skrubolt	Bulloni	M8 x 25	6
4	4/8008	Afdichtring	Scheibe	Spændeskive	Rondella	5/16" x 1"	6
5	4/8006	Afdichtring	Scheibe	Spændeskive	Rondella	M8	6
6	8/8008	Moer	Mutter	Metrik	Dado	M8	8
7	9/8014	Bouten	Bolzen	Skrubolt	Bulloni	M8 x 50	2
8	8/8001	Moer	Mutter	Metrik	Dado	M8	2
9	4/8003	Afdichtring	Scheibe	Spændeskive	Rondella	M8	2
10	161/01800	Bracket	Patte du Montage	Escuadra	Suporte		1
11	161/99573	Scharnier	Scharnier	Hængsel	Cardine		1
12	7/6030	Schroef	Schraube	Skru	Vite	M6 x 30	1
13	4/6007	Afdichtring	Scheibe	Spændeskive	Rondella	M6	3
14	8/6007	Moer	Mutter	Metrik	Dado	M6	2
15	02.0.017	Schroef	Schraube	Skru	Vite	M6 x 30	1
16	914/25303	Kabel	Kabel	Kabel	Cavo		1



**Top Cover, Couvercle Sup,
Cubierta - Parte Superior, Tampa Superior**

→ 043180

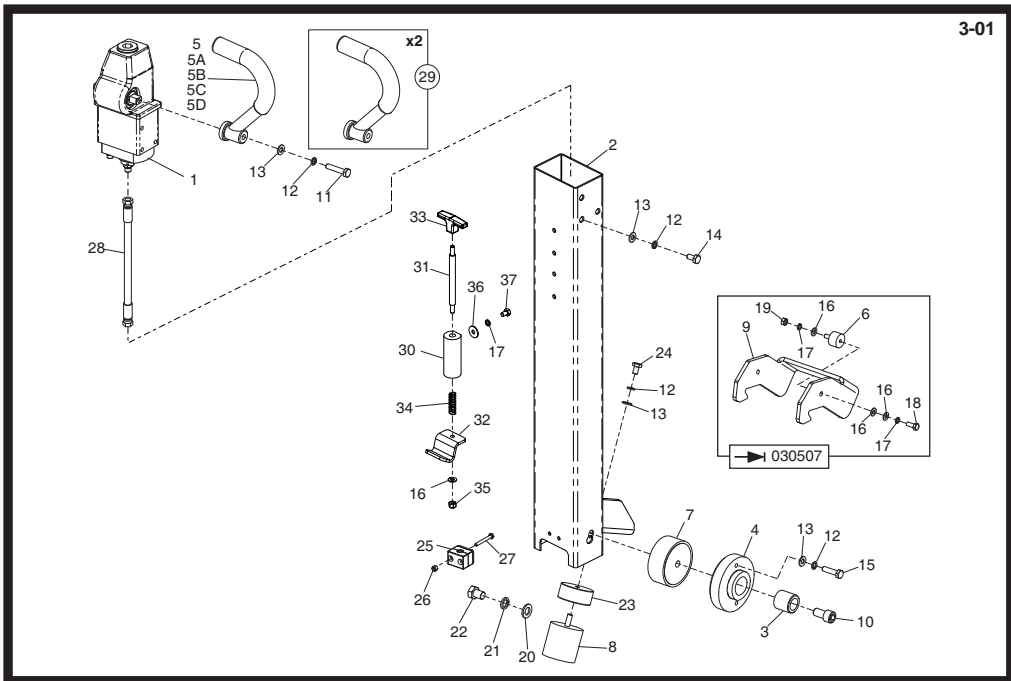
1	161/99721SCover - Orange.....	Couvercle - Orange	Cubierta - Naranja	Tampa - Laranja	1
1	161/99721GCover - Green.....	Couvercle - Grun	Cubierta - Verde	Tampa - Verde	1
1	161/99721YCover - Yellow.....	Couvercle - Jaune.....	Cubierta - Amarillo.....	Tampa - Amarelo.....	1
1	161/99721BCover - Blue.....	Couvercle - Bleu.....	Cubierta - Azul.....	Tampa - Azul	1
1	161/99721RCover - Red.....	Couvercle - Rouge.....	Cubierta - Roja.....	Tampa - Vermelho.....	1
1	161/99721WCover - White.....	Couvercle - Blanc	Cubierta - Blanco.....	Tampa - Branco	1
2	161/99712Bracket.....	Patte du Montage	Escuadra	Suporte	1
3	7/8011Bolt.....	Boulon.....	Perno.....	Perno.....	M8 x 20.....
4	4/8008Washer.....	Rondelle.....	Arandela.....	Anilha.....	5/16" x 1".....
5	4/8006Washer.....	Rondelle.....	Arandela.....	Anilha.....	M8.....
6	8/8008Nut.....	Ecrou.....	Tuerca.....	Porca.....	M8.....
7	161/99573Hinge.....	Charnière.....	Bisagra.....	Dobradiça.....
8	7/6030Screw.....	Vis.....	Tornillo.....	Parafuse.....	M6 x 30.....
9	4/6007Washer.....	Rondelle.....	Arandela.....	Anilha.....	M6.....
10	8/6007Nut.....	Ecrou.....	Tuerca.....	Porca.....	M6.....
11	02.0.017Screw.....	Vis.....	Tornillo.....	Parafuse.....	M6 x 30.....
12	914/25303Cable.....	Câble.....	Cable.....	Cable.....
13	161/99711Bracket.....	Patte du Montage	Escuadra.....	Suporte
14	72/0002Buffer.....	Butoir.....	Parachoques.....	Amortecedor.....
15	161/99723Strap.....	Bride.....	Banda.....	Tira.....



**Deksel - Boven, Abdeckung - Oberteil,
Dæk - Øverste, Coperchio Sommita**

→ 043180

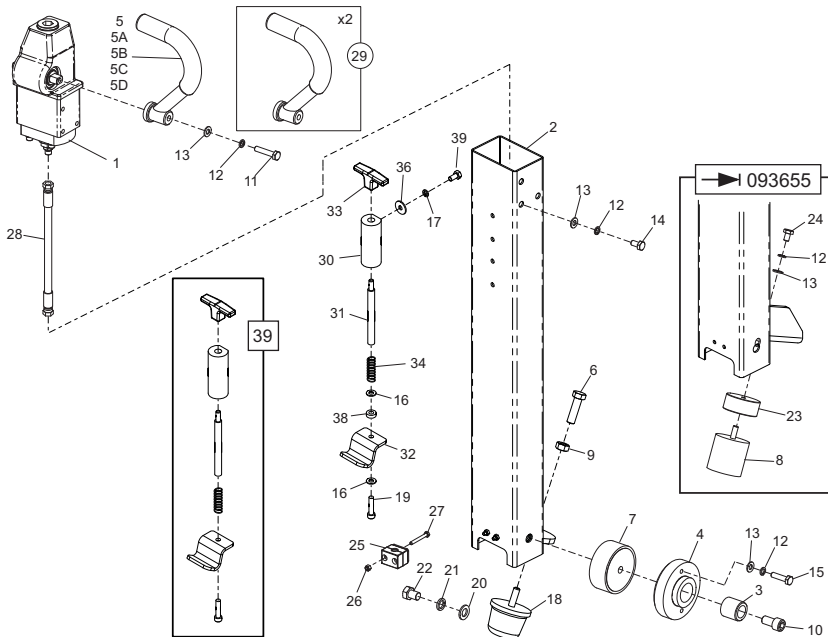
1	161/99721SDeksel - Oranje.....	Abdeckung - Orange.....	Dæk - Orange.....	Coperchio - Arancione.....	1
1	161/99721GDeksel - Groen.....	Abdeckung - Grün.....	Dæk - Grøn.....	Coperchio - Verde.....	1
1	161/99721YDeksel - Geel.....	Abdeckung - Gelb.....	Dæk - Gul.....	Coperchio - Giallo.....	1
1	161/99721BDeksel - Blauw.....	Abdeckung - Blau.....	Dæk - Blå.....	Coperchio - Blu.....	1
1	161/99721RDeksel - Rood.....	Abdeckung - Rot.....	Dæk - Rød.....	Coperchio - Rosso.....	1
1	161/99721WDeksel - Wit.....	Abdeckung - Weiß.....	Dæk - Hvid.....	Coperchio - Bianco.....	1
2	161/99712Steen.....	Halterung.....	Beslag.....	Staffa.....	1
3	7/8011Bouten.....	Bolzen.....	Skrubolt.....	Bulloni.....	8
4	4/8008Afdichtring.....	Scheibe.....	Spændeskive.....	Rondella.....	5/16" x 1"
5	4/8006Afdichtring.....	Scheibe.....	Spændeskive.....	Rondella.....	M8.....
6	8/8008Moer.....	Mutter.....	Motrik.....	Dado.....	M8.....
7	161/99573Scharnier.....	Scharnier.....	Hængsel.....	Cardine.....
8	7/6030Schroef.....	Schraube.....	Skruer.....	Vite.....	M6 x 30.....
9	4/6007Afdichtring.....	Scheibe.....	Spændeskive.....	Rondella.....	M6.....
10	8/6007Moer.....	Mutter.....	Motrik.....	Dado.....	M6.....
11	02.0.017Schroef.....	Schraube.....	Skruer.....	Vite.....	M6 x 30.....
12	914/25303Kabel.....	Kabel.....	Kabel.....	Cavo.....
13	161/99711Steen.....	Halterung.....	Beslag.....	Staffa.....
14	72/0002Buffer.....	Puffer.....	Kofanger.....	Respingente.....
15	161/99723Beugel.....	Band.....	Bøjle.....	Cinghia.....



**Hendel, Griff-zsb.,
Håndtag Montage, Gruppo Impugnatura**

→ 093553

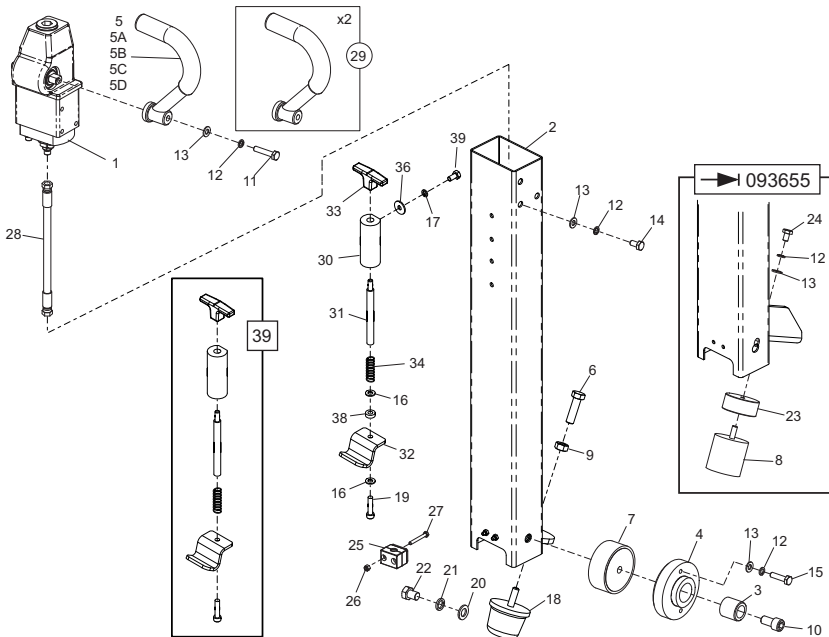
1	161.3.069SP	Pomp	Pumpe	Kontrollpumpeenhed	Pompa	1
2	161/00900	Hendel	Griff	Hovedstel	Impugnatura	→ 031373 1
2	161/23900	Hendel	Griff	Hovedstel	Impugnatura	→ 031374 1
3	161/99544	Pen	Zapfen	Stift	Perno	2
4	161/99543	Bus	Busche	Bøsning	Boccola	2
25	161/99658	Hendel - Grijs	Griff - Grau	Manillar - Grå	Punho - Grigio	2
25A	☛ Item 32	Hendel - Oranje	Griff - Orange	Håndtag - Orange	Impugnatura - Arancione	2
25B	☛ Item 32	Hendel - Groen	Griff - Grün	Håndtag - Grøn	Impugnatura - Verde	2
25C	☛ Item 32	Hendel - Geel	Griff - Gelb	Håndtag - Gul	Impugnatura - Giallo	2
25D	☛ Item 32	Hendel - Blauw	Griff - Blau	Håndtag - Blå	Impugnatura - Blu	2
6	21/0141	Anti-trilbevestiging	Schwingsdämpfer	Antivibrationsophæng	Supporto Antivibrazioni	2
7	21/0140	Anti-trilbevestiging	Schwingsdämpfer	Antivibrationsophæng	Supporto Antivibrazioni	2
8	21/0142	Anti-trilbevestiging	Schwingsdämpfer	Antivibrationsophæng	Supporto Antivibrazioni	2
9	161/99545	Grendel	Riegel	Sicherheits	Saliscendi	1
10	7/16005	Schroef	Schraube	Skruue	Vite	M16 X 30 2
11	9/10007	Schroef	Schraube	Skruue	Vite	M10 X 50 2
12	4/1003	Afdichting	Scheibe	Spændeskive	Rondella	M10 13
13	4/1005	Afdichting	Scheibe	Spændeskive	Rondella	M10 13
14	7/10004	Schroef	Schraube	Skruue	Vite	M10 X 20 6
15	7/10009	Schroef	Schraube	Skruue	Vite	M10 X 40 4
16	4/8006	Afdichting	Scheibe	Spændeskive	Rondella	M8 6
17	4/8003	Afdichting	Scheibe	Spændeskive	Rondella	M8 4
18	7/8011	Schroef	Schraube	Skruue	Vite	M8 X 20 2
19	8/8001	Moer	Mutter	Møtrik	Dado	M8 2
20	4/1601	Afdichting	Scheibe	Spændeskive	Rondella	M16 2
21	05.1.009	Afdichting	Scheibe	Spændeskive	Rondella	M16 2
22	4/8003	Afdichting	Scheibe	Spændeskive	Rondella	M8 4
23	161/99614	Afstandsstuk	Distanzstück	Afstandsstykke	Distanziale	1
24	7/10013	Schroef	Schraube	Skruue	Vite	M10 X 16 1
25	3/7039	Klem	Schelle	Klemme	Morsetto	1/4" 1
26	8/6007	Moer	Mutter	Møtrik	Dado	M6 2
27	02.0.020	Schroef	Schraube	Skruue	Vite	M6 X 50 2
28	30/0080	Slang	Schlauchstück	Slange	Flessibile	1
29	161/07700	Hendelset	Griffsatz	Håndtagsskit	Kit Impugnatura	1
30	161.0.240	Grendel	Riegel	Sicherheits	Saliscendi	1
31	161/27300	Draadbuis	Gewinderohr	Gevindskæret Rør	Tubo Filettato	1
32	161.0.238	Steen	Halterung	Beslag	Staffe	1
33	19.0.843	Hendel	Griff	Håndtag	Impugnatura	1
34	19.0.095	Veer	Feder	Fjeder	Molla	1
35	8/8008	Moer	Mutter	Møtrik	Dado	M8 1
36	4/8004	Afdichting	Scheibe	Spændeskive	Rondella	8 X 25 X 2 2
37	02.0.086	Schroef	Schraube	Skruue	Vite	M8 X 12 2



Handle Assembly, Ensemble Poignée, Conjunto de Manillar, Conjunto do Punho

→ 093554

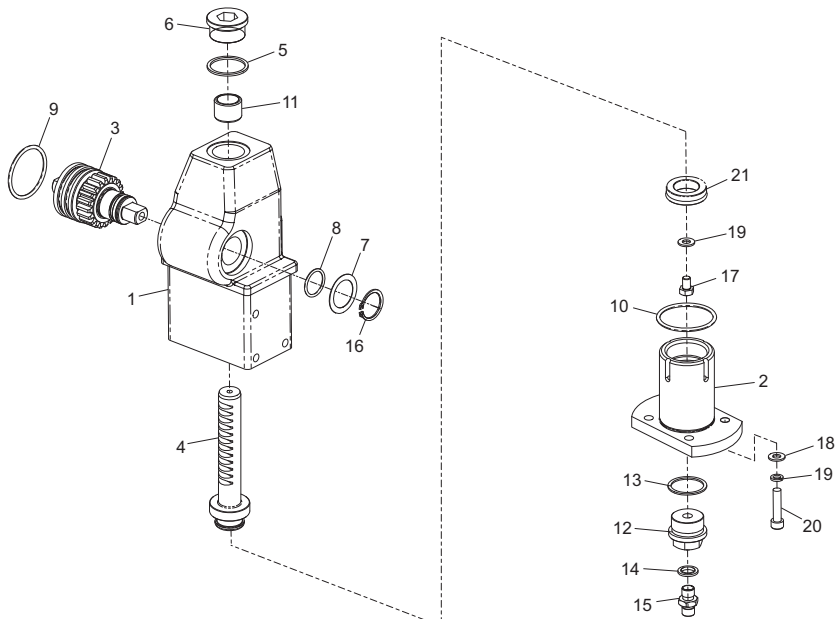
1	161.3.069SP	Pump	Tête de Timon Complète	Cabeza de la Bomba	Cabeça da Bomba	→ 093655	1
2	161/23900	Handle	Guidon	Manillar	Punho	→ 093655	1
2	161/23800	Handle	Guidon	Manillar	Punho	→ 093656	1
3	161/99544	Pin	Goupille	Pasador	Pino		2
4	161/99543	Bush	Douille	Buje	Bucha		2
5	161/99658	Handle - Grey	Guidon - Gris	Manillar - Gris	Punho - Cinzento		2
5A	Item 29	Handle - Orange	Guidon - Orange	Manillar - Narajá	Punho - Laranja		2
5B	Item 29	Handle - AP Green	Guidon - Grun	Manillar - Verde	Punho - Verde		2
5C	Item 29	Handle - Yellow	Guidon - Jaune	Manillar - Azul	Punho - Azul		2
5D	Item 29	Handle - Blue	Guidon - Bleu	Manillar - Amarillo	Punho - Amarelo		2
6	161/99725	Screw	Vis	Tornillo	Parafuse		1
7	21/0140	Anti-Vibration Mount	Tampon antivibratoire	Montura antivibratoria	Bloco Anti-vibração		2
8	21/0142	Anti-Vibration Mount	Tampon antivibratoire	Montura antivibratoria	Bloco Anti-vibração		1
9	8/2001	Nut	Ecrou	Tuerca	Porca	M20	1
10	7/16005	Screw	Vis	Tornillo	Parafuse	M16 x 30	2
11	9/10007	Screw	Vis	Tornillo	Parafuse	M10 x 50	2
12	4/1003	Washer	Rondelle	Arandela	Anilha	M10	13
13	4/1005	Washer	Rondelle	Arandela	Anilha	M10	13
14	7/10004	Screw	Vis	Tornillo	Parafuse	M10 x 20	6
15	7/10009	Screw	Vis	Tornillo	Parafuse	M10 x 40	4
16	4/8006	Washer	Rondelle	Arandela	Anilha	M8	7
17	4/8003	Washer	Rondelle	Arandela	Anilha	M8	6
18	21/0283	Buffer	Butoir	Parachoques	Amortecedor		1
19	7/10047	Screw	Vis	Tornillo	Parafuse	M10	1
20	4/1601	Washer	Rondelle	Arandela	Anilha	M16	2
21	05.1.009	Washer	Rondelle	Arandela	Anilha	M16	2
22	7/16007	Screw	Vis	Tornillo	Parafuse	M16	4
23	161/99614	Spacer	Entretoise	Espaciador	Espaciador		1
24	7/10013	Screw	Vis	Tornillo	Parafuse	M10 x 16	1
25	3/7039	Clamp	Bride	Mordaza	Grampo	1/4"	1
26	8/6007	Nut	Ecrou	Tuerca	Porca	M6	2
27	02.0.020	Screw	Vis	Tornillo	Parafuse	M6 x 50	2
28	30/0080	Hose	Durit	Flexible	Tubagem		1
29	161/07700	Handle Kit	Kit de Guidon	Kit Manillar	Kit do Punho		1
30	161.0.240	Latch	Verrou	Cerrojo	Trinco		1
31	161/99806	Threaded Rod	Tube Fileté	Tubo Roscado	Tubo Roscado		1
32	161.0.238	Bracket	Patte de montage	Escuadra	Suporte		1
33	19.0.843	Handle	Guidon	Manillar	Punho		1
34	19.0.095	Spring	Ressort	Resorte	Mola		1
35	8/8008	Nut	Ecrou	Tuerca	Porca	M8	1
36	4/8004	Washer	Rondelle	Arandela	Anilha	8 x 25 x 2	2
37	7/8008	Screw	Vis	Tornillo	Parafuse	M8 x 12	2
38	161/99805	Spacer	Entretoise	Espaciador	Espaciador		1
39	161/27300	Latch Kit	Kit Verrou	Kit Cerrojo	Kit Trinco		1



Hendel, Griff-zsb., Håndtag Montage, Gruppo Impugnatura

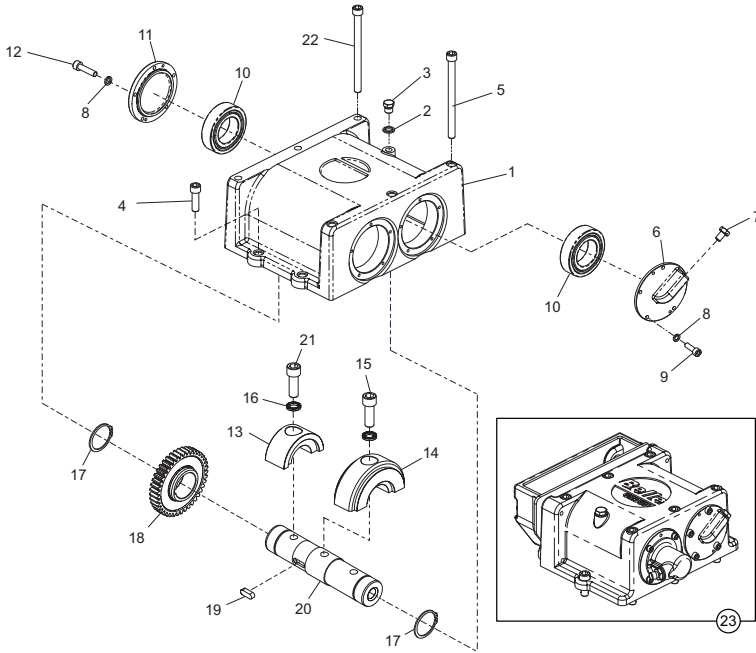
→ 093554

1	161.3.069SP	Pomp	Pumpe	Kontrollpumpeenhed	Pompa	→ 093655	1
2	161/23900	Hendel	Griff	Hovedstel	Impugnatura	→ 093655	1
2	161/23800	Hendel	Griff	Hovedstel	Impugnatura	→ 093656	1
3	161/99544	Pen	Zapfen	Stift	Perno		1
4	161/99543	Bus	Busche	Bøsning	Boccola		2
25	161/99658	Hendel - Grijs	Griff - Grau	Manillar - Grå	Punho - Grigio		2
25A	☛ Item 32	Hendel - Oranje	Griff - Orange	Håndtag - Orange	Impugnatura - Arancione		2
25B	☛ Item 32	Hendel - Groen	Griff - Grün	Håndtag - Grøn	Impugnatura - Verde		2
25C	☛ Item 32	Hendel - Geel	Griff - Gelb	Håndtag - Gul	Impugnatura - Giallo		2
25D	☛ Item 32	Hendel - Blauw	Griff - Blau	Håndtag - Blå	Impugnatura - Blu		2
6	161/99725	Schroef	Schraube	Skruue	Vite		2
7	21/0140	Anti-trilbevestiging	Schwingungsdämpfer	Antivibrationsophæng	Supporto Antivibrazioni		2
8	21/0142	Anti-trilbevestiging	Schwingungsdämpfer	Antivibrationsophæng	Supporto Antivibrazioni		2
9	8/2001	Moer	Mutter	Møtrik	Dado	M20	1
10	7/16005	Schroef	Schraube	Skruue	Vite	M16 X 30	2
11	9/10007	Schroef	Schraube	Skruue	Vite	M10 X 50	2
12	4/1003	Afdichting	Scheibe	Spændeskive	Rondella	M10	13
13	4/1005	Afdichting	Scheibe	Spændeskive	Rondella	M10	13
14	7/10004	Schroef	Schraube	Skruue	Vite	M10 X 20	6
15	7/10009	Schroef	Schraube	Skruue	Vite	M10 X 40	4
16	4/8006	Afdichting	Scheibe	Spændeskive	Rondella	M8	6
17	4/8003	Afdichting	Scheibe	Spændeskive	Rondella	M8	4
18	21/0283	Buffer	Puffer	Kofanger	Respingente		1
19	7/10047	Schroef	Schraube	Skruue	Vite	M10	2
20	4/1601	Afdichting	Scheibe	Spændeskive	Rondella	M16	2
21	05.1.009	Afdichting	Scheibe	Spændeskive	Rondella	M16	2
22	7/16007	Schroef	Schraube	Skruue	Vite	M16	4
23	161/99614	Afstandsstuk	Distanzstück	Afstandsstykke	Distanziale		1
24	7/10013	Schroef	Schraube	Skruue	Vite	M10 X 16	1
25	3/7039	Klem	Schelle	Klemme	Morsetto	1/4"	1
26	8/6007	Moer	Mutter	Møtrik	Dado	M6	2
27	02.0.020	Schroef	Schraube	Skruue	Vite	M6 X 50	2
28	30/0080	Slang	Schlauchstück	Slange	Flessibile		1
29	161/07700	Hendelset	Griffsatz	Håndtagskit	Kit Impugnatura		1
30	161.0.240	Grendel	Riegel	Sicherheits	Saliscendi		1
31	161/99806	Draadbuis	Gewinderohr	Gevindskåret Rør	Tubo Filettato		1
32	161.0.238	Steen	Halterung	Beslag	Staffe		1
33	19.0.843	Hendel	Griff	Håndtag	Impugnatura		1
34	19.0.095	Veer	Feder	Fjeder	Molla		1
35	8/8008	Moer	Mutter	Møtrik	Dado	M8	1
36	4/8004	Afdichting	Scheibe	Spændeskive	Rondella	8 X 25 X 2	2
37	7/8008	Schroef	Schraube	Skruue	Vite	M8 X 16	2
38	161/99805	Afstandsstuk	Distanzstück	Afstandsstykke	Distanziale		1
39	161/27300	Grendel Kit	Riegel Kit	Sicherheits Kit	Kit Saliscendi		1



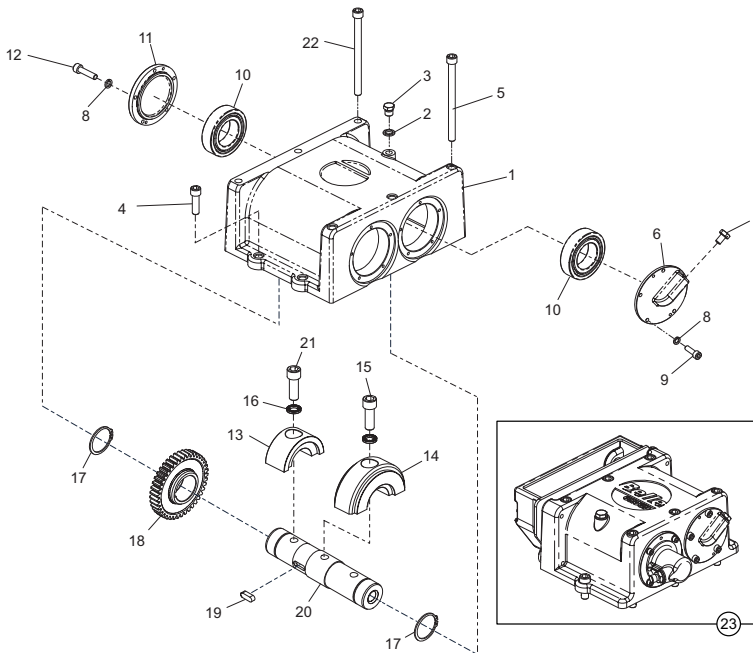
Pump Assembly, Pompa, Bomba, Conjunto Bomba

1	161/99642	Handle Head	Tête de poignée	Cabeza del asa	Punho do Manipulo	1
2	161/99639	Piston Guide	Guide de piston	Guía de pistón	Pino do Pistão	1
3	161/99549	Pinion Shaft	Axe de pignon	Eje de piñón	Veio do Pinhão	1
4	161/99638	Pinion Rack	Crémaillere de pignon	Barra de piñones	Cremalheira de Pinhão	1
5	161.0.158	Washer	Rondelle	Arandela	Anilha	36.5 x 41.75 x 2
6	03.0.031	Screw	Vis	Tornillo	Parafuse	1
7	161/99548	Shim	Cale d'épaisseur	Cuña	Calço	30 x 42 x 0.5
8	5/0059	O-Ring	Joint torique	Junta tórica	Anel Vedante	25ID x 2.65
9	5/0058	O-Ring	Joint torique	Junta tórica	Anel Vedante	50.5ID x 3.53
10	5/0060	O-Ring	Joint torique	Junta tórica	Anel Vedante	54.5ID x 3.55
11	50/000066	Bush	Douille	Buje	Bucha	28 x 22 x 20
12	161/99546	Plug	Bougie	Tapón	Bujão	M33 X 2
13	4/3301	Washer	Rondelle	Arandela	Anilha	33 x 39 x 2
14	15.0.102	Washer	Rondelle	Arandela	Anilha	1/4"
15	14.0.533	Adaptor	Adapteur	Adaptador	Adaptador	1/4"X1/4"
16	3/9013	Circlip	Circlip	Resorte circular	Grampo circular	1
17	7/8004	Screw	Vis	Tornillo	Parafuse	M8 x 12
18	4/8006	Washer	Rondelle	Arandela	Anilha	M8
19	4/8003	Washer	Rondelle	Arandela	Anilha	M8
20	07.0.028	Screw	Vis	Tornillo	Parafuse	M8 x 30
21	5/0064	Seal	Joint d'étanchéité	Obturador	Vedação	1



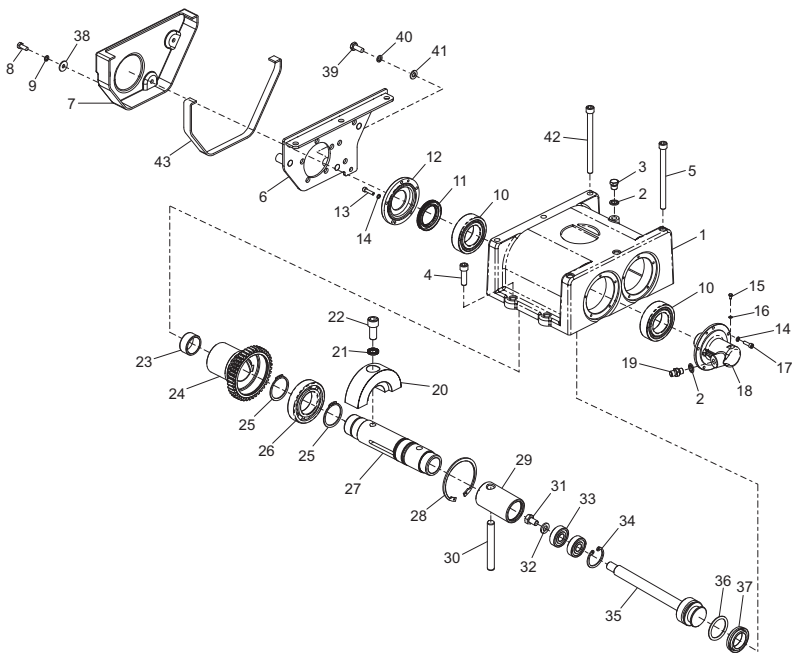
**Gearbox Assembly, Ensemble Boîte de Vitesses,
Conjunto de Caja de Engranajes, Conjunto da Caixa de Engrenagens**

1	161/99527Gearbox CasingCarter de boîte de vitessesEnvoltura de la transmisiónEstojo da caixa de engrenagens	→ 0221071
1	161/99675Gearbox CasingCarter de boîte de vitessesEnvoltura de la transmisiónEstojo da caixa de engrenagens	→ 0221081
2	15.0.102WasherRondelleArandelaAnilha	1/4"1
3	14.0.108PlugBougieTapónBujão	1/4"1
4	7/12010ScrewVisTornilloParafuse	→ 0221072
4	7/14015ScrewVisTornilloParafuse	→ 0221082
5	7/12025ScrewVisTornilloParafuse	→ 0221073
5	7/14013ScrewVisTornilloParafuse	→ 0221083
6	161/99532End CoverCarter d'extrémitéTapa de fondoTampa de extremidade	1
7	161/99513ScrewVisTornilloParafuse	M10 x 201
8	4/6005WasherRondelleArandelaAnilha	M610
9	7/6040ScrewVisTornilloParafuse	M6 x 205
10	53/0017BearingRoulementCojineteRolamento	1
11	161/99525End CoverCarter d'extrémitéTapa de fondoTampa de extremidade	1
12	7/6042ScrewVisTornilloParafuse	M6 x 305
13	161/99652Weight 60Poids 60Peso 60Peso 60	2
14	161/99654Weight 60Poids 60Peso 60Peso 60	1
15	7/16015ScrewVisTornilloParafuse	M16 x 551
16	05.3.069WasherRondelleArandelaAnilha	M163
17	3/9012CirclipCirclipResorte circularGrampo circular	2
18	161/99521GearPignonEngranajeEngrenagen	1
19	161/99523KeyClavetteChavetaChave	M10 x 8 x 181
20	161/99530ShaftAxeEjeViejo	1
21	7/16014ScrewVisTornilloParafuse	M16 x 402
22	7/12026ScrewVisTornilloParafuse	→ 0221073
22	7/14014ScrewVisTornilloParafuse	→ 0221083
23	161.3.073SPGearbox AssemblyEnsemble boîte de vitessesConjunto de caja de engranajesConjunto da Caixa de Engrenagens	→ 0221081



**Gearkassemontage, Getriebe-Zsb.,
Vernellingsbak., Gruppo Scatola Ingranaggi**

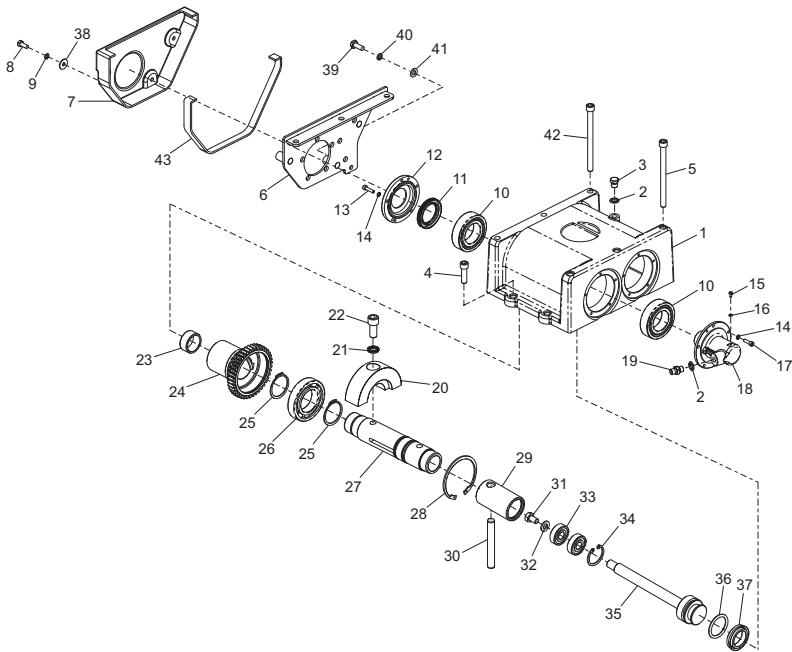
1	161/99527Vernellingsbakhuis.....	Getriebekasten	Gearkassehus	Involucro scatola ingranaggi.....	→ 022107.....	1
1	161/99675Vernellingsbakhuis.....	Getriebekasten	Gearkassehus	Involucro scatola ingranaggi.....	→ 022108.....	1
2	15.0.102Afdichtring	Scheibe	Spændeskive	Cuscinetto	1/4"	1
3	14.0.108Plug	Verslucsschraube	Prop	Candela	1/4"	1
4	7/12010Schroef	Schraube	Skruue	Vite	→ 022107.....	2
4	7/14015Schroef	Schraube	Skruue	Vite	→ 022108.....	2
5	7/12025Schroef	Schraube	Skruue	Vite	→ 022107.....	3
5	7/14013Schroef	Schraube	Skruue	Vite	→ 022108.....	3
6	161/99532Einddeksel	Endschild	Endedæksel	Coperchio estremità	1
7	161/99513Schroef	Schraube	Skruue	Vite	M10 x 20	1
8	4/6005Afdichtring	Scheibe	Spændeskive	Cuscinetto	M6	10
9	7/6040Schroef	Schraube	Skruue	Vite	M6 x 20	5
10	53/0017Lager	Lager	Leje	Cuscinetto	1
11	161/99524Einddeksel	Endschild	Endedæksel	Coperchio estremità	1
12	7/6042Schroef	Schraube	Skruue	Vite	M6 x 30	5
13	161/99652Gewicht 60	Gewicht 60	Vægt 60	Peso 60	2
14	161/99654Gewicht 60	Gewicht 60	Vægt 60	Peso 60	2
15	7/16015Schroef	Schraube	Skruue	Vite	M16 x 55	1
16	05.3.069Afdichtring	Scheibe	Spændeskive	Cuscinetto	M16	3
17	3/9012Borgveer	Sprengring	Låsering	Anello Elastico	2
18	161/99521Tandwiele	Zahnrade	Gear	Ingranaggi	1
19	161/99523Spie	Keile	Kile	Chiave	M10 x 8 x 18	1
20	161/99530As	Welle	Aksel	Albero	1
21	7/16014Schroef	Schraube	Skruue	Vite	M16 x 40	2
22	7/12026Schroef	Schraube	Skruue	Vite	→ 022107.....	3
22	7/14014Schroef	Schraube	Skruue	Vite	→ 022108.....	3
23	161.3.073SPGearkassemontage	Getriebe-Zsb.	Vernellingsbak	Gruppo scatola ingranaggi	→ 022108.....	1



**Gearbox Assembly, Ensemble Boîte de Vitesses,
Conjunto de Caja de Engranajes, Conjunto da Caixa de Engrenagens**

→ 11.06.2007

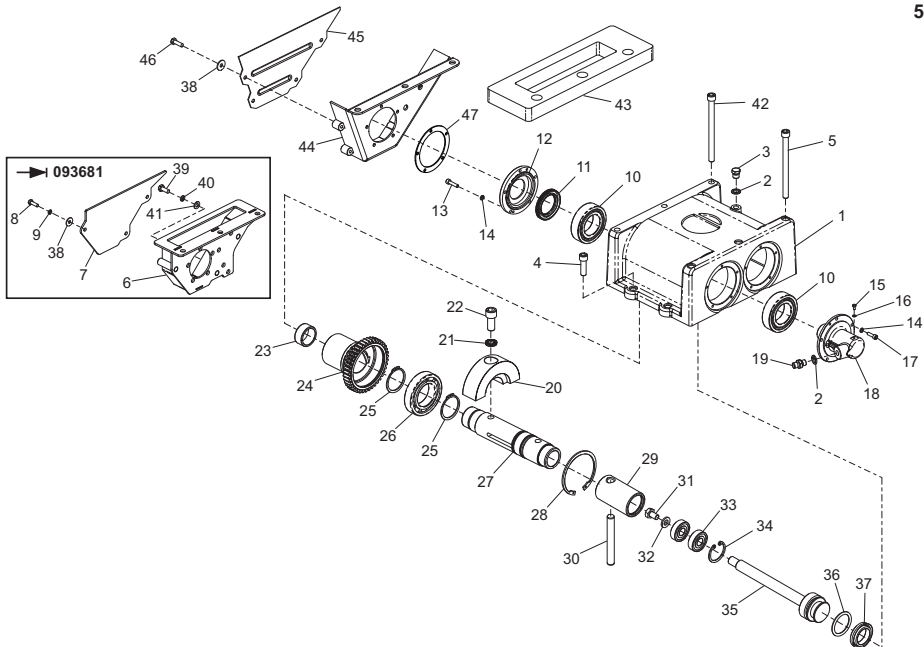
1	161/99527Gearbox Casing	Cartier de boîte de vitesses...	Envoltura de la transmisión	Estojo da caixa de engrenagens	1
2	15.0.102Washer	Rondelle	Arandela	Anilha	1/4"
3	14.0.108Plug	Bougie	Tapón	Bujão	1/4"
4	7/12010Screw	Vis	Tornillo	Parafuse	M12 x 40
5	7/12021Screw	Vis	Tornillo	Parafuse	M12 x 160 x 1.75
6	161/06100Belt Guard	Capot de courroie	Protector de la correa	Guarda da Cinta	→ 022107
6	161/09900Belt Guard	Capot de courroie	Protector de la correa	Guarda da Cinta	→ 022108
7	161/99651Belt Guard	Capot de courroie	Protector de la correa	Guarda da Cinta
8	7/8011Screw	Vis	Tornillo	Parafuse	M8 x 20
9	4/8003Washer	Rondelle	Arandela	Anilha	M10
10	53/0017Bearing	Roulement	Cojinete	Rolamanto
11	5/0056Seal	Joint d'étanchéité	Obturador	Vedação
12	161/99525End Cover	Cartier d'extrémité	Tapa de fondo	Tampa de extremidade
13	7/6042Screw	Vis	Tornillo	Parafuse	M6 x 30
14	4/6005Washer	Rondelle	Arandela	Anilha	M6
15	7/4004Screw	Vis	Tornillo	Parafuse	M4 x 8
16	4/4004Washer	Rondelle	Arandela	Anilha	M4
17	7/6040Screw	Vis	Tornillo	Parafuse	M4 x 20
18	161/99531End Cover	Cartier d'extrémité	Tapa de fondo	Tampa de extremidade
19	14.0.533Adaptor	Adaptateur	Adaptador	Adaptador	1/4"X1/4"
20	161/99653Weight 60	Poids 60	Peso 60	Peso 60
21	05.3.069Washer	Rondelle	Arandela	Anilha	M10
22	7/16013Screw	Vis	Tornillo	Parafuse	M16 x 40
23	50/00065Bearing	Roulement	Cojinete	Rolamanto
24	161/99522Gear	Pignon	Engranaje	Engrenagen
25	3/9009Circlip	Circlip	Resorte circular	Grampo circular
26	53/0018Bearing	Roulement	Cojinete	Rolamanto
27	161/99526Shaft	Axe	Eje	Veio
28	3/9010Circlip	Circlip	Resorte circular	Grampo circular	100 x 3
29	161/99540Piston	Piston	Pistón	Pistão
30	161/99533Pin	Goupille	Pasador	Pino
31	7/6011Screw	Vis	Tornillo	Parafuse	M6 x 10
32	4/6001Washer	Rondelle	Arandela	Anilha	M6
33	53/0019Bearing	Roulement	Cojinete	Rolamanto
34	3/9011Circlip	Circlip	Resorte circular	Grampo circular	42 x 1.75
35	161/99539Piston	Piston	Pistón	Pistão
36	5/0057O-Ring	Joint torique	Junta tórica	Anel Vedante	300D x 3
37	5/0055Oil Seal	Joint d'étanchéité à l'huile	Obturador aceite	Vedação de Óleo	M8 x 25 x 2
38	4/8004Washer	Rondelle	Arandela	Anilha	M10 x 25
39	7/10005Screw	Vis	Tornillo	Parafuse	M10
40	4/1003Washer	Rondelle	Arandela	Anilha	M10
41	4/1005Washer	Rondelle	Arandela	Anilha	M10
42	7/12026Screw	Vis	Tornillo	Parafuse	→ 022107
42	7/14014Screw	Vis	Tornillo	Parafuse	→ 022108
43	21.0.029Edging Strip	Gaine Protection	Banda Protectora	Fita de rebordo



**Gearkassemontage, Getriebe-Zsb.,
Vernellingsbak., Gruppo Scatola Ingranaggi**

→ 11.06.2007

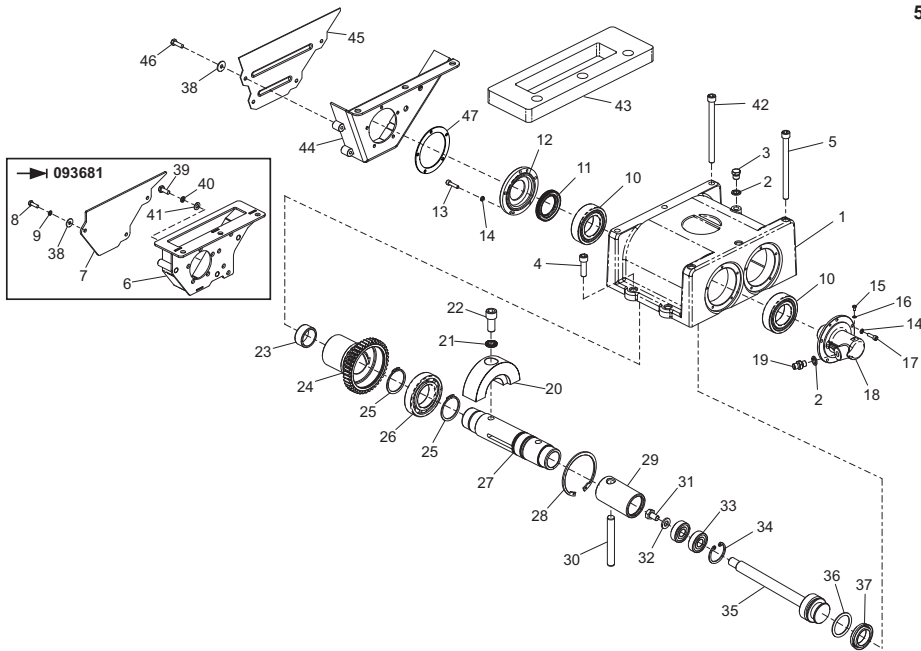
1	161/99527	Vernellingsbakhuis	Getriebekasten	Gearkassehous	Involucro scatola ingranaggi	1
2	15.0.102	Afdichting	Scheibe	Spændeskive	Cuscinetto	1/4"
3	14.0.108	Plug	Versluissekschraube	Prop	Candela	1/4"
4	7/12010	Schroef	Schraube	Skruue	Vite	M12 x 40
5	7/12021	Schroef	Schraube	Skruue	Vite	M12 x 160 x 1.75
6	161/06100	Riemschermkap	Treibriemen-Schutzabdeckung	Rembeskyttelse	Protezione della cinghia	→ 022107
6	161/09900	Riemschermkap	Treibriemen-Schutzabdeckung	Rembeskyttelse	Protezione della cinghia	→ 022108
7	161/99651	Riemschermkap	Treibriemen-Schutzabdeckung	Rembeskyttelse	Protezione della cinghia	1
8	7/8011	Schroef	Schraube	Skruue	Vite	M8 x 20
9	4/8003	Afdichting	Scheibe	Spændeskive	Cuscinetto	M10
10	53/0017	Lager	Lager	Leje	Cuscinetto	1
11	5/0056	Afdichting	Dichtung	Tætning	Tenuta	1
12	161/99525	Einddeksel	Endschild	Endedæksel	Coperchio estremità	1
13	7/6042	Schroef	Schraube	Skruue	Vite	M6 x 30
14	4/6005	Afdichting	Scheibe	Spændeskive	Cuscinetto	M6
15	7/4004	Schroef	Schraube	Skruue	Vite	M4 x 8
16	4/4004	Afdichting	Scheibe	Spændeskive	Cuscinetto	M4
17	7/6040	Schroef	Schraube	Skruue	Vite	M6 x 20
18	161/99531	Einddeksel	Endschild	Endedæksel	Coperchio estremità	1
19	14.0.533	Adaptor	Adaptor	Adaptor	Adattatore	1/4"x1/4"
20	161/99653	Gewicht 60	Gewicht 60	Vægt 60	Peso 60	1
21	05.3.069	Afdichting	Scheibe	Spændeskive	Cuscinetto	M10
22	7/16013	Schroef	Schraube	Skruue	Vite	M16 x 40
23	50/00065	Lager	Lager	Leje	Cuscinetto	1
24	161/99522	Tandwiele	Zahnraede	Gear	Ingranaggi	1
25	3/9009	Borgveer	Sprengring	Låsering	Anello Elastico	2
26	53/0018	Lager	Lager	Leje	Cuscinetto	1
27	161/99526	As	Welle	Aksel	Albero	1
28	3/9010	Borgveer	Sprengring	Låsering	Anello Elastico	100 x 3
29	161/99540	Zuiger	Kolben	Zuiger	Stantuffo	1
30	161/99533	Pen	Zapfen	Stift	Perno	1
31	7/6011	Schroef	Schraube	Skruue	Vite	M6 x 10
32	4/6001	Afdichting	Scheibe	Spændeskive	Cuscinetto	M6
33	53/0019	Lager	Lager	Leje	Cuscinetto	2
34	3/9011	Borgveer	Sprengring	Låsering	Anello Elastico	42 x 1.75
35	161/99539	Zuiger	Kolben	Zuiger	Stantuffo	1
36	5/0057	O-Ring	O-Ring	O-Ring	O-Ring	300D x 3
37	5/0055	Oliefdichting	Oliefichtung	Oliepakning	Paralolio	1
38	4/8004	Afdichting	Scheibe	Spændeskive	Cuscinetto	M8 x 25 x 2
39	7/10005	Schroef	Schraube	Skruue	Vite	M10 x 25
40	4/1003	Afdichting	Scheibe	Spændeskive	Cuscinetto	M10
41	4/1005	Afdichting	Scheibe	Spændeskive	Cuscinetto	M10
42	7/12026	Schroef	Schraube	Skruue	Vite	→ 022107
42	7/14014	Schroef	Schraube	Skruue	Vite	→ 022108
43	21.0.029	Kantstrip	Kantenschutz	Kantband	Gaina Protettiv	3



Gearbox Assembly, Ensemble Boîte de Vitesses, Conjunto de Caja de Engranajes, Conjunto da Caixa de Engrenagens

→ 11.06.2007

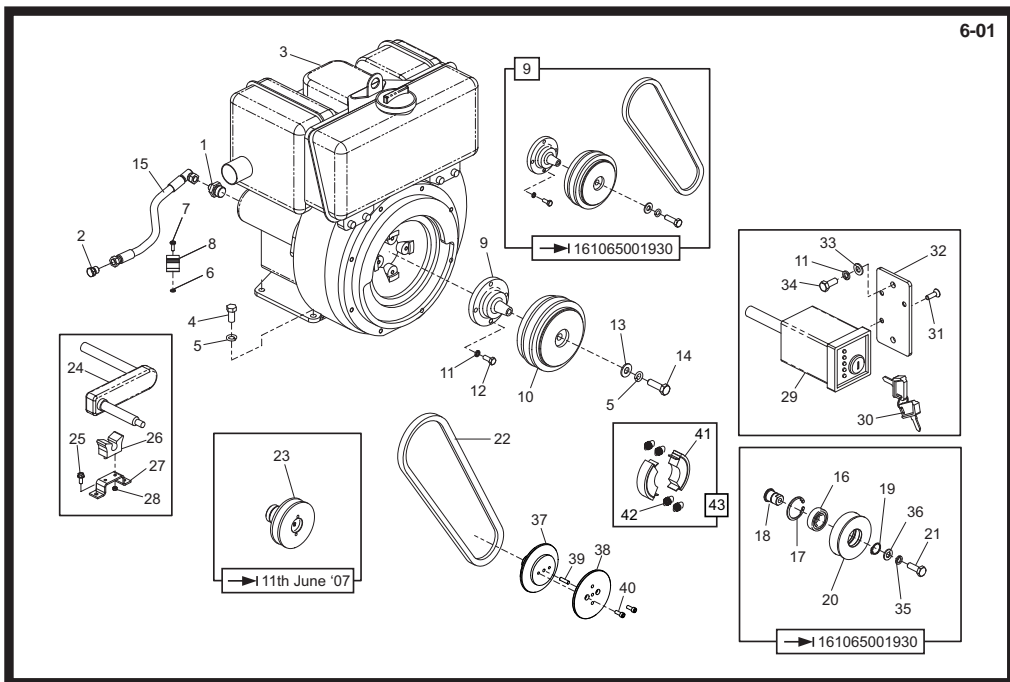
1	161/99527.....	Gearbox Casing	Carter de boîte de vitesses	Envoltura de la transmisión	Estojo da caixa de engrenagens	1
2	15.0.102.....	Washer	Rondelle	Arandela	Anilha	1/4"
3	14.0.108.....	Plug	Bougie	Tapón	Bujão	1/4"
4	7/12010.....	Screw	Vis	Tornillo	Parafuse	M12 x 40
5	7/12021.....	Screw	Vis	Tornillo	Parafuse	M12 x 160 x 1.75
6	161/19000.....	Belt Guard	Capot de courroie	Protector de la correa	Guarda da Cinta	→ 093681
7	161/99709.....	Cover	Couvercle	Cubierta	Tampa	→ 093681
8	7/8012.....	Screw	Vis	Tornillo	Parafuse	→ 093681
9	4/8003.....	Washer	Rondelle	Arandela	Anilha	M10
10	53/0017.....	Bearing	Roulement	Cojinete	Rolamento	1
11	5/0056.....	Seal	Joint d'étanchéité	Obturador	Vedação	1
12	161/99525.....	End Cover	Carter d'extrémité	Tapa de fondo	Tampa de extremidade	1
13	7/6042.....	Screw	Vis	Tornillo	Parafuse	M6 x 30
14	4/6005.....	Washer	Rondelle	Arandela	Anilha	M6
15	7/4004.....	Screw	Vis	Tornillo	Parafuse	M4 x 8
16	4/4004.....	Washer	Rondelle	Arandela	Anilha	M4
17	7/6040.....	Screw	Vis	Tornillo	Parafuse	M6 x 20
18	161/99531.....	End Cover	Carter d'extrémité	Tapa de fondo	Tampa de extremidade	1
19	14.0.533.....	Adaptor	Adaptateur	Adaptador	Adaptador	1/4"X1/4"
20	161/99653.....	Weight 60	Poids 60	Peso 60	Peso 60	2
21	05.3.069.....	Washer	Rondelle	Arandela	Anilha	M10
22	7/16006.....	Screw	Vis	Tornillo	Parafuse	M16 x 40
23	50/000065.....	Bearing	Roulement	Cojinete	Rolamento	1
24	161/99522.....	Gear	Pignon	Engranaje	Engrenagem	1
25	3/9009.....	Circlip	Circlip	Resorte circular	Grampo circular	2
26	53/0018.....	Bearing	Roulement	Cojinete	Rolamento	1
27	161/99526.....	Shaft	Axe	Eje	Veio	1
28	3/9010.....	Circlip	Circlip	Resorte circular	Grampo circular	100 x 3
29	161/99540.....	Piston	Piston	Pistón	Pistão	1
30	161/99533.....	Pin	Goupille	Pasador	Pino	1
31	7/6011.....	Screw	Vis	Tornillo	Parafuse	M6 x 10
32	4/6001.....	Washer	Rondelle	Arandela	Anilha	M6
33	53/0019.....	Bearing	Roulement	Cojinete	Rolamento	2
34	3/9011.....	Circlip	Circlip	Resorte circular	Grampo circular	42 x 1.75
35	161/99539.....	Piston	Piston	Pistón	Pistão	1
36	5/0057.....	O-Ring	Joint torique	Junta tórica	Anel Vedante	300D x 3
37	5/0055.....	Oil Seal	Joint d'étanchéité à l'huile	Obturador aceite	Vedação de Oleo	1
38	4/8004.....	Washer	Rondelle	Arandela	Anilha	M8
39	7/10005.....	Screw	Vis	Tornillo	Parafuse	M10 x 25
40	4/1003.....	Washer	Rondelle	Arandela	Anilha	M10
41	4/1005.....	Washer	Rondelle	Arandela	Anilha	M10
42	7/14014.....	Screw	Vis	Tornillo	Parafuse	3
43	161/99705.....	Pad	Tampon	Tampón	Bloco	→ 093682
44	161/26900.....	Belt Guard	Capot de courroie	Protector de la correa	Guarda da Cinta	→ 093682
45	161/99759.....	Cover	Couvercle	Cubierta	Cubierta	→ 093682
46	7/8037.....	Screw	Vis	Tornillo	Parafuse	→ 093682
47	161/99818.....	Spacer	Entretoise	Espaciador	Espaçador	1



**Gearkassemontage, Getriebe-Zsb.,
Vernellingsbak., Gruppo Scatola Ingranaggi**

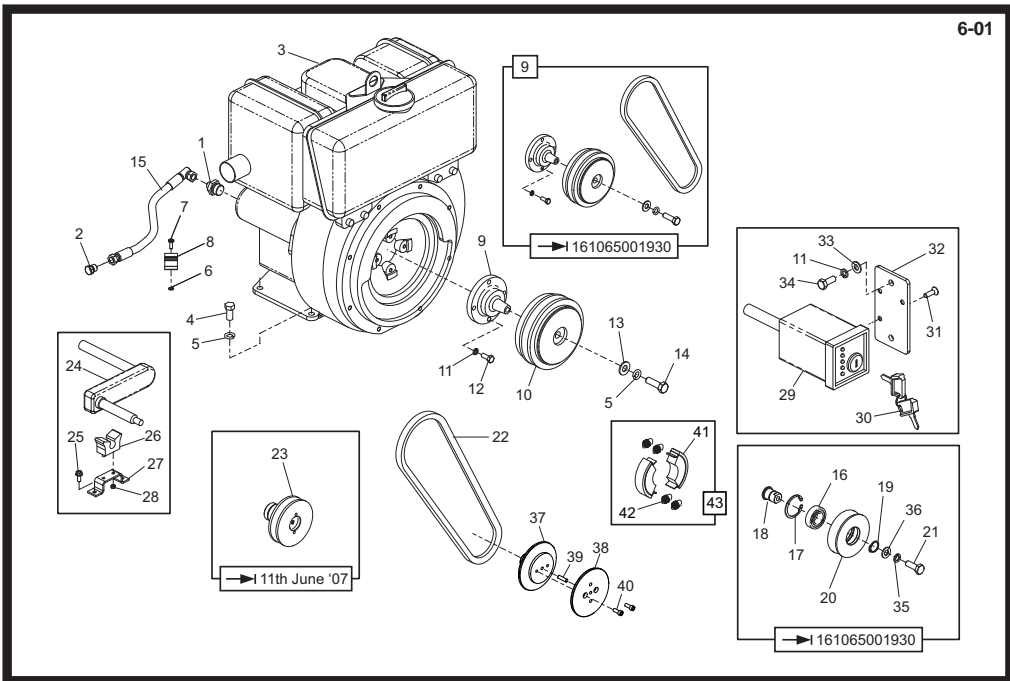
→ 11.06.2007

1	161/99527Vernellingsbakhuis.....	GetriebekastenGearkassehous	Involucro scatola ingranaggi	1
2	15.0.102Afdichting.....	ScheibeSpændeskive	Cuscinetto1/4"	1
3	14.0.108PlugVerschlusschraubePropCandela1/4"	1
4	7/12010SchroefSchraubeSkruue	ViteM12 x 40	1
5	7/12021SchroefSchraubeSkruue	ViteM12 x 160 x 1.75	1
6	161/19000Riemschermkap.....	Treibriemen-Schutzabdeckung	Rembeskyttelse	Protezione della cinghia	→ 093681	1
7	161/99709DekselAbdeckungDæk	Coperchio	→ 093681	1
8	7/8012SchroefSchraubeSkruue	Vite	→ 093681	3
9	4/8003Afdichting.....	ScheibeSpændeskive	CuscinettoM10	3
10	53/0017LagerLagerLeje	Cuscinetto	3
11	5/0056Afdichting.....	DichtungTætning	Tenuta	1
12	161/99525Einddæksel	EndschildEndedæksel	Coperchio estremità	1
13	7/6042SchroefSchraubeSkruue	ViteM6 x 30	1
14	4/6005Afdichting.....	ScheibeSpændeskive	CuscinettoM6	1
15	7/4004SchroefSchraubeSkruue	ViteM4 x 8	1
16	4/4004Afdichting.....	ScheibeSpændeskive	CuscinettoM4	1
17	7/6040SchroefSchraubeSkruue	ViteM6 x 20	1
18	161/99531Einddæksel	EndschildEndedæksel	Coperchio estremità	1
19	14.0.533Adaptor	AdaptorAdaptor	Adattatore1/4"x1/4"	1
20	161/99653Gewicht 60	Gewicht 60Vægt 60	Peso 60	2
21	05.3.069Afdichting.....	ScheibeSpændeskive	CuscinettoM10	2
22	7/16006SchroefSchraubeSkruue	ViteM16 x 40	2
23	50/00065LagerLagerLeje	Cuscinetto	1
24	161/99522Tandwiele	ZahnradeGear	Ingranaggi	1
25	3/9009Borgveer	SprengningLåsering	Anello Elastico	2
26	53/0018LagerLagerLeje	Cuscinetto	1
27	161/99526As	WelleAksel	Albero	1
28	3/9010Borgveer	SprengningLåsering	Anello Elastico100 x 3	1
29	161/99540Zuiger	KolbenZuiger	Stantuffo	1
30	161/99539Fen	ZapfenStift	Perno	1
31	7/6011SchroefSchraubeSkruue	ViteM6 x 10	1
32	4/6001Afdichting.....	ScheibeSpændeskive	CuscinettoM6	1
33	53/0019LagerLagerLeje	Cuscinetto	2
34	3/9011Borgveer	SprengningLåsering	Anello Elastico42 x 1.75	1
35	161/99539Zuiger	KolbenZuiger	Stantuffo	1
36	5/0057O-Ring	O-RingO-Ring	O-Ring300D x 3	1
37	5/0055Oliefafdichting.....	OldichtungOliepakning	Paralolio	1
38	4/8004Afdichting.....	ScheibeSpændeskive	CuscinettoM8	3
39	7/10005SchroefSchraubeSkruue	ViteM10 x 25	1
40	4/1003Afdichting.....	ScheibeSpændeskive	CuscinettoM10	1
41	4/1005Afdichting.....	ScheibeSpændeskive	CuscinettoM10	1
42	7/14014SchroefSchraubeSkruue	Vite	3
43	161/99705Onderplaat	RüttelplatteKlods	Tampone	1
44	161/26900Riemschermkap.....	Treibriemen-Schutzabdeckung	Rembeskyttelse	Protezione della cinghia	→ 093682	1
45	161/99759Deksel	AbdeckungDæk	Coperchio	→ 093682	1
46	7/8037SchroefSchraubeSkruue	Vite	→ 093682	4
47	161/99818Afstandsstuk	DistanzstückAfstandsstykke	Distanziale	1



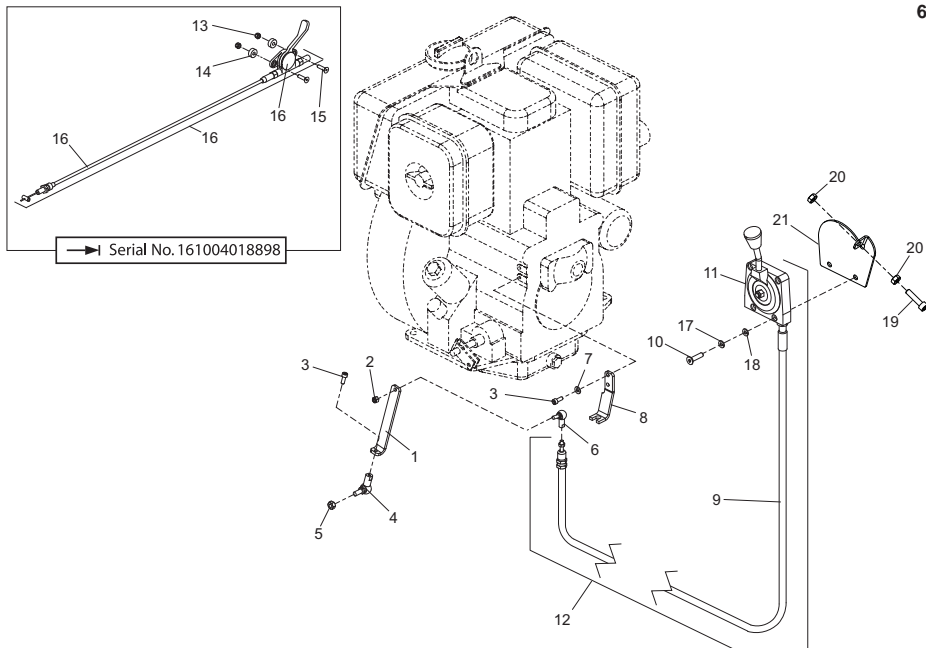
Motor and Drive Kit, Moteur et Kit d'Entrainement, Motor y Kit Transmission, Motor e Kit de Transmissão

1	6/0202	Adaptor	Adaptateur	Adaptador	Adaptador	1	
2	14.0.108	Plug	Bougie	Bujón	Bujón	1	
3	20/0071	Engine - Electric	Moteur - Electrique	Motor - Electricidad	Motor - Eléctrico	Non EPA Only	1
3	20/0117	Engine - Electric	Moteur - Electrique	Motor - Electricidad	Motor - Eléctrico	EPA Only	1
3	20/0072	Engine - Crank Handle	Moteur - Manivelle	Motor - Por Manivela	Motor - Por Manivela	Non EPA Only	1
3	20/0118	Engine - Crank Handle	Moteur - Manivelle	Motor - Por Manivela	Motor - Por Manivela	EPA Only	1
4	7/12004	Screw	Vis	Tornillo	Parafuso	M12 x 25	4
5	4/1202	Washer	Rondelle	Arandela	Anilha	M12	5
6	05.1.002	Washer	Rondelle	Arandela	Anilha	M4	1
7	7/4002	Screw	Vis	Tornillo	Parafuso	M4 x 12	1
8	21.0.336	Clip	Chape	Presilla	Grampo	M5 x 20	1
9	161/11600	Kit	Kit	Kit	Kit	→ 001930	1
9	161/99692	Shaft	Axe	Eje	Veio	→ 001931	1
10	161/11600	Kit	Kit	Kit	Kit	→ 001930	1
10	161/27500	Kit	Kit	Kit	Kit	→ 001931 → 093506	1
10	21/0393	Clutch	Embrayage	Embrague	Embraiagem	→ 093507	1
11	4/8003	Washer	Rondelle	Arandela	Anilha	M8	3
12	7/8012	Bolt	Boulon	Perno	Perno	M8 x 25	1
13	4/1201	Washer	Rondelle	Arandela	Anilha	M12	1
14	9/12038	Bolt	Boulon	Perno	Perno	M12 x 50	1
15	30/0081	Hose	Durit	Flexible	Tubagem		1
16	53/0016	Bearing	Roulement	Rolamete	Rolamento		1
17	MS22	Circlip	Circlip	Resorte circular	Grampo circular		1
18	161/26100	Pin	Goupille	Pasador	Pino		1
19	3/9003	Circlip	Circlip	Resorte circular	Grampo circular		1
20	161/26100	Pulley	Poulie	Polia	Polia		1
21	7/10010	Screw	Vis	Tornillo	Parafuso	M10 x 30	1
22	21/0170	Belt	Courroie	Correa	Cinta		1
23	161/99650	Pulley	Poulie	Polia	Polia		1
24	21/0230	Handle	Poignee	Manillar	Punho	M8 x 20	1
25	7/8037	Screw	Vis	Tornillo	Parafuso	M8 x 20	5
26	21/0144	Clip	Chape	Presilla	Grampo		2
27	161/99619	Bracket	Patte du Montage	Escuadra	Suporte		2
28	8/6002	Nut	Ecrou	Tuerca	Porca	M6	4
29	21/0231	Ignition	Ignition	Ignición	Ignição		1
30	21/0229	Key	Clavette	Chaveta	Chave		1
31	7/6025	Screw	Vis	Tornillo	Parafuso	M6 x 20	1
32	161/99574	Plate	Plaque	Placa	Placa		3
33	4/8006	Washer	Rondelle	Arandela	Anilha	M8	2
34	7/8011	Screw	Vis	Tornillo	Parafuso	M8 x 20	2
35	4/1003	Washer	Rondelle	Arandela	Anilha	M10	1
36	4/1005	Washer	Rondelle	Arandela	Anilha	M10	1
37	161/99763	Pulley	Poulie	Polia	Polia		1
38	161/99764	Pulley	Poulie	Polia	Polia		1
39	161/99715	Pin	Goupille	Pasador	Pino		1
40	7/8077	Screw	Vis	Tornillo	Parafuso	M8 x 20	1
41	21/0362	Spring	Ressort	Resorte	Mola		2
42	21/0367	Clutch Lining	Doubleur embrayage	Guarnición de embrague	lona de embraegem		2
43	21/0368KIT	Clutch Kit	Kit d'embrayage	Kit de embrague	Kit de embraegem		1



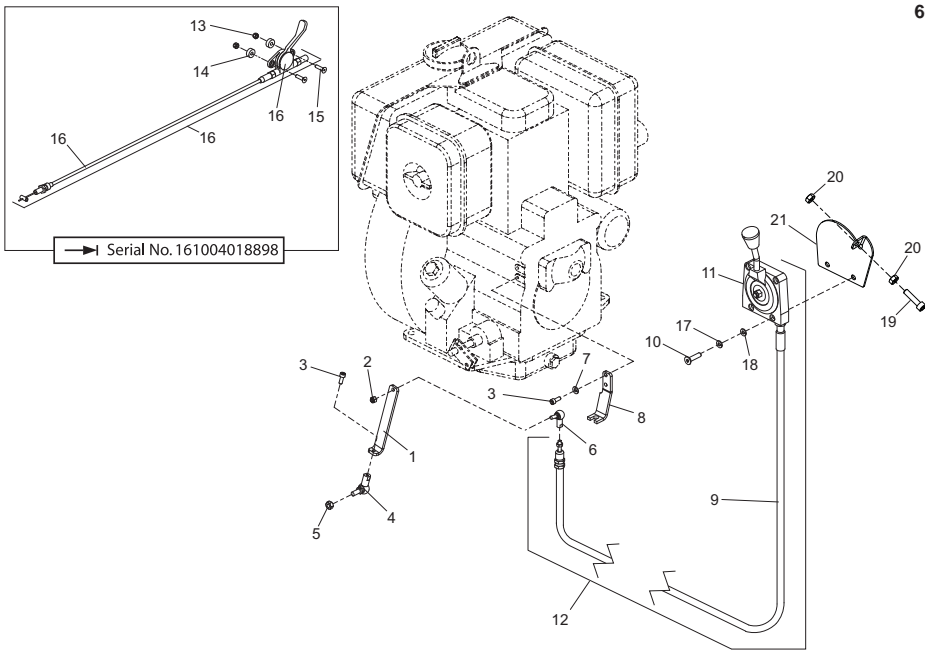
Motor en Aandrijfset, Motor und Antriebsbausatz, Motor og Gearkit, Motore e Kit Trasmissione

1	6/202	Adaptor	Adaptor	Adaptor	Adattatore	1
2	14.0.108	Plug	Verschlusschraube	Prop	Candela	1
3	20/0071	Motor - Electrisch	Motor - Electrisch	Motor - Elektrisk	Motore - Elettrico	Non EPA Only
3	20/0117	Motor - Electrisch	Motor - Electrisch	Motor - Elektrisk	Motore - Elettrico	EPA Only
3	20/0072	Motor - onstabiel handvat	Motor - reizbarer Handgriff	Motor - crank manipulere med	Motore - Manovella	Non EPA Only
3	20/0118	Motor - onstabiel handvat	Motor - reizbarer Handgriff	Motor - crank manipulere med	Motore - Manovella	EPA Only
4	7/12004	Schroef	Schraube	Skrue	Vite	M12 x 25
5	4/1202	Afdichtring	Scheibe	Spændeskive	Cuscinetto	M12
6	05.1.002	Afdichtring	Scheibe	Spændeskive	Cuscinetto	M4
7	7/4002	Schroef	Schraube	Skrue	Vite	M4 x 12
8	21.0.336	Klem	Klemme	Klemme	Fermaglio	M5 x 20
9	161/11600	Set	Satz	Kit	Kit	→ 001930
9	161/99692	As	Velle	Aksel	Albero	→ 001931
10	161/11600	Set	Satz	Kit	Kit	→ 001930
10	161/27500	Set	Satz	Kit	Kit	→ 001931 → 093506
10	21/0393	Kuppling	Koppeling	Kobling	Frizione	→ 093507
11	4/8003	Afdichtring	Scheibe	Spændeskive	Cuscinetto	M8
12	7/8012	Bouten	Bolzen	Skruebolt	Bulloni	M8 x 25
13	4/1201	Afdichtring	Scheibe	Spændeskive	Cuscinetto	M12
14	9/12038	Bouten	Bolzen	Skruebolt	Bulloni	M12 x 50
15	30/0081	Slang	Schlauchstück	Slange	Flessibile	
16	53/0016	Lager	Lager	Leje	Cuscinetto	
17	MS22	Borgveer	Sprengring	Låsering	Anello Elastico	
18	161/26100	Pen	Zapfen	Stift	Perno	
19	3/9003	Borgveer	Sprengring	Låsering	Anello Elastico	
20	161/26100	Poelie	Riemscheibe	Riemskive	Puleggia	
21	7/10010	Schroef	Schraube	Skrue	Vite	M10 x 30
22	21/0170	Riem	Riemen	Remmen	Cinghia	
23	161/99650	Poelie	Riemscheibe	Riemskive	Puleggia	
24	21/0230	Hendel	Griff	Håndtag	Impugnatura	M8 x 20
25	7/8037	Schroef	Schraube	Skrue	Vite	M8 x 20
26	21/0144	Klem	Clip	Klemme	Fermaglio	
27	161/99619	Steen	Halterung	Bestaff	Staffa	M8 x 20
28	8/6002	Moer	Mutter	Matrix	Dado	M6
29	21/0231	Ontsteking	Zündschloß	Tændling	Accensione	
30	21/0229	Spie	Keil	Kile	Chiave	
31	7/6025	Schroef	Schraube	Skrue	Vite	M6 x 20
32	161/99574	Plaat	Platte	Plade	Piastra	
33	4/8006	Afdichtring	Scheibe	Spændeskive	Cuscinetto	M8
34	7/8011	Schroef	Schraube	Skrue	Vite	M8 x 20
35	4/1003	Afdichtring	Scheibe	Spændeskive	Cuscinetto	M10
36	4/1005	Afdichtring	Scheibe	Spændeskive	Cuscinetto	M10
37	161/99763	Poelie	Riemscheibe	Riemskive	Puleggia	
38	161/99764	Poelie	Riemscheibe	Riemskive	Puleggia	
39	161/99715	Pen	Zapfen	Stift	Perno	
40	7/8077	Schroef	Schraube	Skrue	Vite	M8 x 20
41	21/0362	Spring	Ressort	Resorre	Mola	
42	21/0367	Clutch Lining	Doubleure embrayage	Guarnición de embrague	Jonca de embragem	
43	21/0368KIT	Clutch Kit	Kit d'embrayage	Kit de embrague	Kit de embragem	



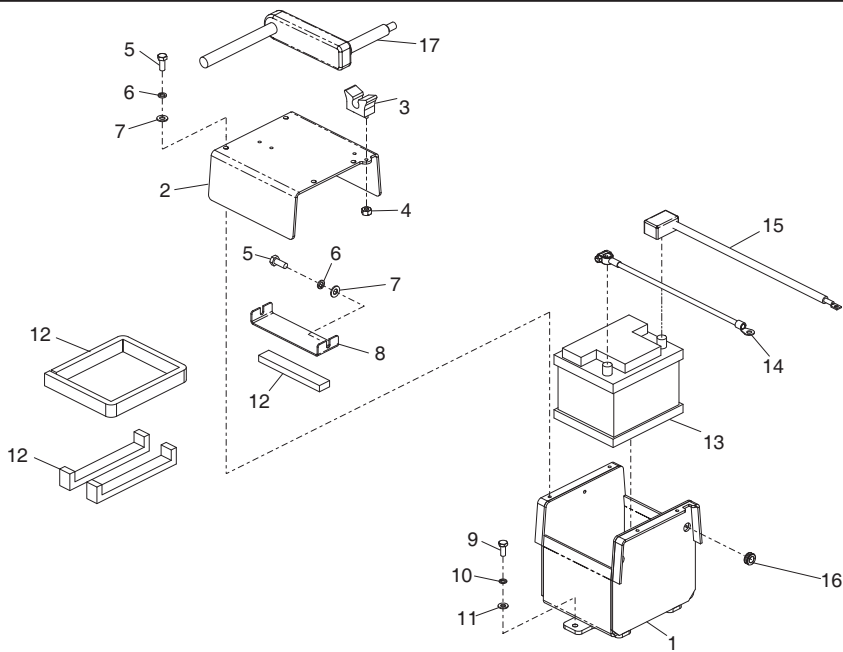
Throttle Cable, Cable d'Accélérateur, Cable de Aceleración, Cabo do Estrangulador

1	161/99665LeverManettePalancaAlavanca1
2	8/6007NutEcrouTuercaPorcaM6.....1
3	7/6004ScrewVisTornilloParafusoM6 x 16.....3
4	3/5044AdaptorAdapteurAdaptadorAdaptador1
5	8/8001NutEcrouTuercaPorcaM8.....1
6	3/5044AdaptorAdapteurAdaptadorAdaptador1
7	4/6007WasherRondelleArandelaAnilhaM6.....1
8	161/99666BracketPatte du MontageEscuadraSuporte1
9	161/08101Throttle CableCâble d'accélérateurCable de aceleraciónCabo do estranguladorNon EPA/Tier 4 Only.....1
10	7/6012ScrewVisTornilloParafusoNon EPA/Tier 4 Only.....4
10	7/6039ScrewVisTornilloParafusoEPA/Tier 4 Only.....4
11	161/08102Throttle LeverManette d'accélérateurPalanca de aceleraciónAlavanca do estranguladorNon EPA/Tier 4 Only.....1
12	161/08100Throttle Lever & CableManette des gaz et le câblePalanca del acelerador y el cableAlavanca do acelerador e caboNon EPA/Tier 4 Only.....1
12	21/0355Throttle Lever & CableManette des gaz et le câblePalanca del acelerador y el cableAlavanca do acelerador e caboEPA/Tier 4 Only.....1
13	8/5002NutEcrouTuercaPorcaM5.....2
14	161/99662SpacerEntretoiseEspañadorEspaçador2
15	07.0.140ScrewVisTornilloParafusoM5 x 20.....2
16	161/08300Throttle LeverManette d'accélérateurPalanca de aceleraciónAlavanca do estrangulador1
17	4/6005WasherRondelleArandelaAnilhaEPA/Tier 4 Only.....2
18	4/6001WasherRondelleArandelaAnilhaEPA/Tier 4 Only.....2
19	7/6051ScrewVisTornilloParafusoEPA/Tier 4 Only.....1
20	8/6001NutEcrouTuercaPorcaEPA/Tier 4 Only.....2
21	161/99418BracketPatte du MontageEscuadraSuporteEPA/Tier 4 Only.....1



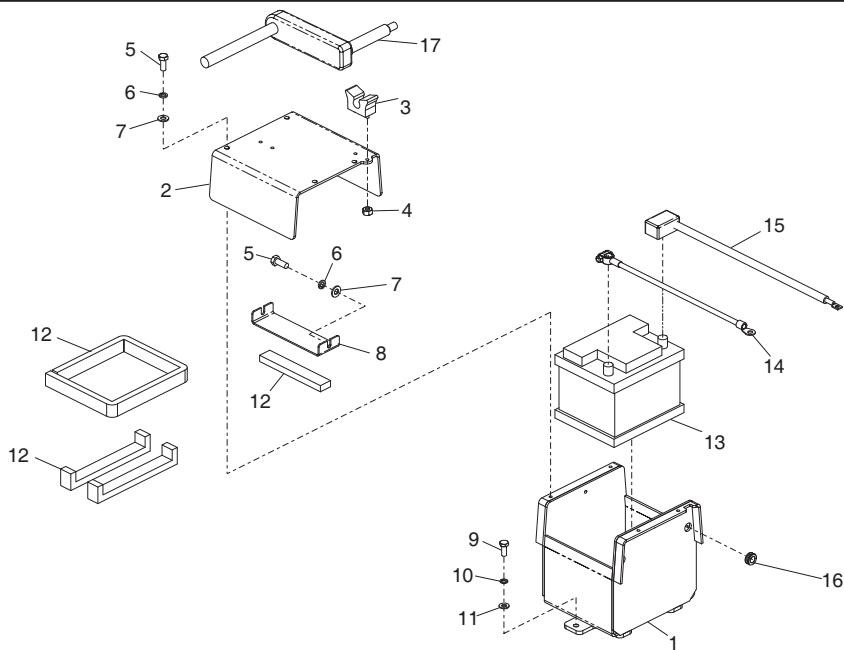
**Gaskabel, Drosselklappenkabel,
Gashåndtagskabel, Cavo dell'Acceleratore**

1	161/99665	Hendel	Hebel	Arm	Leva	1
2	8/6007	Moer	Mutter	Møtrik	Dado	M6.....1
3	7/6004	Schroef	Schraube	Skruue	Vite	M6 x 16.....3
4	3/5044	Adaptor	Adaptor	Adaptor	Adattatore1
5	8/8001	Moer	Mutter	Møtrik	Dado	M8.....1
6	3/5044	Adaptor	Adaptor	Adaptor	Adattatore1
7	4/6007	Afdichtring	Scheibe	Spændeskive	Cuscinetto	M6.....1
8	161/99666	Steun	Halterung	Beslag	Staffa1
9	161/08101	Gaskabel	Drosselklappenkabel	Gashåndtagskabel	Cavo dell'acceleratore	Non EPA/Tier 4 Only.....1
10	7/6012	Schroef	Schraube	Skruue	Vite	Non EPA/Tier 4 Only.....4
10	7/6039	Schroef	Schraube	Skruue	Vite	EPA/Tier 4 Only.....4
11	161/08102	Gashendel	Drosselklappenhebel	Gashåndtag	Leva dell'acceleratore	Non EPA/Tier 4 Only.....1
12	161/08100	Gashendel en kabel	Gashebel und Kabel	Gashåndtaget og kabel	Leva dell'acceleratore e il cavo	Non EPA/Tier 4 Only.....1
12	21/0355	Gashendel en kabel	Gashebel und Kabel	Gashåndtaget og kabel	Leva dell'acceleratore e il cavo	EPA/Tier 4 Only.....1
13	8/5002	Moer	Mutter	Møtrik	Dado	M5.....2
14	161/99662	Afstandsstuk	Distanzstück	Afstandsstykke	Distanziale2
15	07.0.140	Schroef	Schraube	Skruue	Vite	M5 x 20.....2
16	161/08300	Gashendel	Drosselklappenhebel	Gashåndtag	Leva dell'acceleratore1
17	4/6005	Afdichtring	Scheibe	Spændeskive	Cuscinetto	EPA/Tier 4 Only.....2
18	4/6001	Afdichtring	Scheibe	Spændeskive	Cuscinetto	EPA/Tier 4 Only.....2
19	7/6051	Schroef	Schraube	Skruue	Vite	EPA/Tier 4 Only.....1
20	8/6001	Moer	Mutter	Møtrik	Dado	EPA/Tier 4 Only.....2
21	161/99418	Steun	Halterung	Beslag	Staffa	EPA/Tier 4 Only.....1



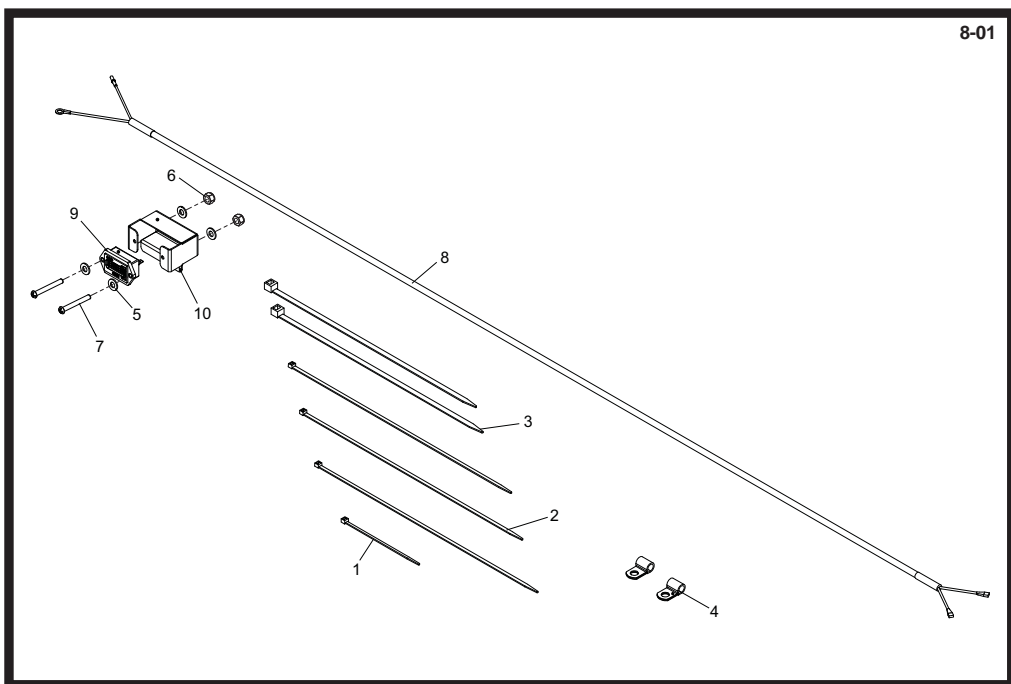
Battery Holder, Support de Batterie Soporte de Bateria, Suporte de Bateria

1	161/02400	Battery Holder	Support de Batterie	Soporte de Bateria	Suporte de Bateria	1
2	161/99577	Cover	Couvercle	Cubierta	Tampa	1
3	21/0144	Clip	Chape	Presilla	Grampo	2
4	8/6002	Nut	Ecrou	Tuerca	Porca	M6..... 2
5	7/8011	Bolt	Boulon	Perno	Perno	M8 x 20..... 5
6	4/8003	Washer	Rondelle	Arandela	Anilha	M8..... 5
7	4/8006	Washer	Rondelle	Arandela	Anilha	M8..... 5
8	161/99578	Clamp	Blocage	Mordaza	Grampo	1
9	7/10005	Screw	Vis	Tornillo	Parafuso	M10 x 25..... 2
10	4/1003	Washer	Rondelle	Arandela	Anilha	M10..... 2
11	4/1005	Washer	Rondelle	Arandela	Anilha	M10..... 2
12	3/4110	Edging Strip	Gainé Protection	Banda Protectora	Fita de rebordo	M10..... 3
13	70/0217	Battery	Batterie	Bateria	Bateria	X
14	70/0232	Cable	Cable	Cable	Cable	1
15	140/05500	Cable	Cable	Cable	Cable	1
16	3/4036	Grommet	Passe-fil	Anillo	Anel Isolante	1
17	21/0230	Handle	Poignée	Manillar	Punho	1



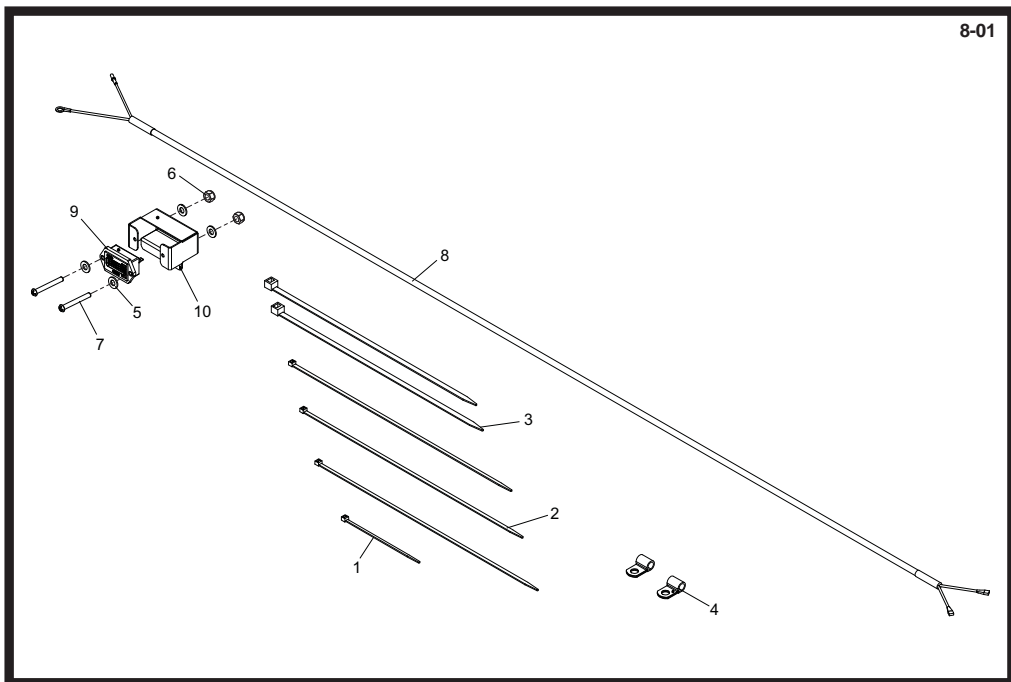
Accu Houder, Batterie Halter, Batteri Beslag, Contenitore Batteria

1	161/02400	Accu Houder	Batterie Halter	Batteri Beslag	Contenitore batteria	1
2	161/99577	Deksel	Abdeckung	Dæk	Coperchio	1
3	21/0144	Klem	Clip	Klemme	Fermaglio	2
4	8/6002	Moer	Mutter	Møtrik	Dado	M6
5	7/8011	Bouten	Bolzen	Skruebolt	Bulloni	M8 x 20
6	4/8003	Afdichtring	Scheibe	Spændeskive	Cuscinetto	M8
7	4/8006	Afdichtring	Scheibe	Spændeskive	Cuscinetto	M8
8	161/99578	Klem	Schelle	Klemme	Morsetto	1
9	7/10005	Schroef	Schraube	Skrue	Vite	M10 x 25
10	4/1003	Afdichtring	Scheibe	Spændeskive	Cuscinetto	M10
11	4/1005	Afdichtring	Scheibe	Spændeskive	Cuscinetto	M10
12	3/4110	Kantstrip	Kantenschutz	Kantband	Gaina Protettiv	X
13	70/0217	Accu	Batterie	Batteri	Batteria	1
14	70/0232	Kabel	Kabel	Kabel	Cavo	1
15	140/05500	Kabel	Kabel	Kabel	Cavo	1
16	3/4036	Pakkingring	Auge	Kordelstrop	Anello in gomma	1
17	21/0230	Handel	Griff	Håndtag	Impugnatura	1



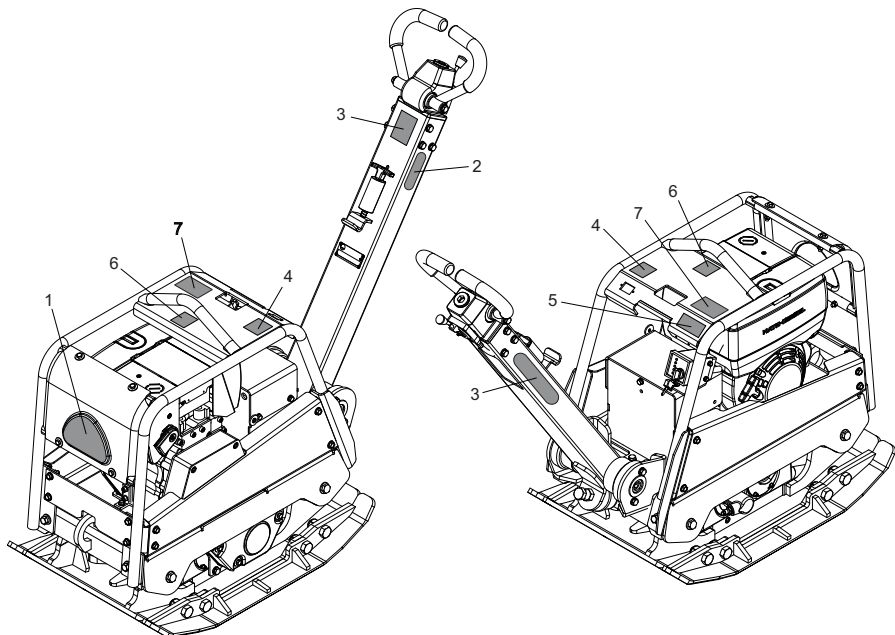
Hourmeter, Compteur Horaire, Cuenta Horas, Horímetro

1	3/6005.....	Cable Tie	Serre-câble	Unión cable.....	Tirante de Cabo.....	3.6 x 140 Lg.....	1
2	3/6007.....	Cable Tie	Serre-câble	Unión cable.....	Tirante de Cabo.....	4.8 x 390 Lg.....	3
3	3/6009.....	Cable Tie	Serre-câble	Unión cable.....	Tirante de Cabo.....	7.6 x 370 Lg.....	2
4	3/7039.....	P-Clip.....	Pince en P.....	Mordaza P.....	Grampo em P.....		2
5	4/3002.....	Washer.....	Rondelle.....	Arandela.....	Anilha.....	M3.....	4
6	8/3002.....	Nut.....	Ecrou.....	Tuerca.....	Porca.....	M3.....	2
7	7/3013.....	Screw.....	Vis.....	Tornillo.....	Parafuso.....	M3 X 25.....	2
8	71/0273.....	Harness.....	Faisceau.....	Partida.....	Arnés.....		1
9	100/02400.....	Hourmeter.....	Compteur horaire.....	Cuenta horas.....	Horímetro.....		1
10	161/99815GR.....	Bracket.....	Patte de montage.....	Escuadra.....	Suporte.....		1



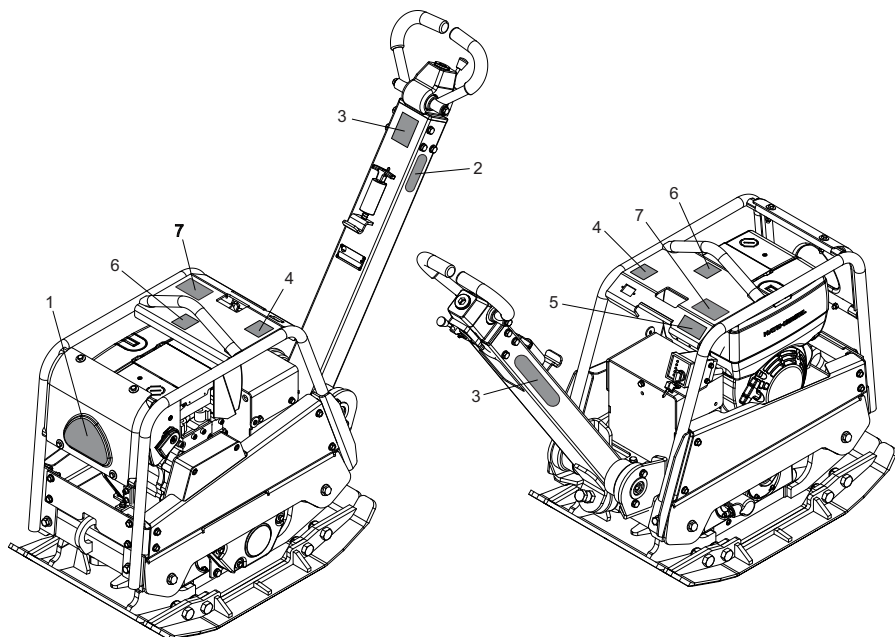
Urenteller, Stundenzähler, Timetæller, Contaore

1	3/6005	Kabelgat	Kabelbinder	Kabelbånd	Legaccio per cavo	3.6 x 140 Lg	1
2	3/6007	Kabelgat	Kabelbinder	Kabelbånd	Legaccio per cavo	4.8 x 390 Lg	3
3	3/6009	Kabelgat	Kabelbinder	Kabelbånd	Legaccio per cavo	7.6 x 370 Lg	2
4	3/7039	P-klem	P-Schelle	P-klemme	Morsetto P		2
5	4/3002	Afdichting	Scheibe	Spandeskive	Cuscinetto	M3	4
6	8/3002	Moef	Mutter	Motrik	Dado	M3	2
7	7/3013	Schroef	Schraube	Skru	Vite	M3 X 25	2
8	71/0273	Bedrading	Kabelbaum	Ledningsnet	Cablaggio		1
9	100/02400	Urenteller	Stundenzähler	Timetæller	Contaore		1
10	161/99815GR	Steun	Halterung	Beslag	Staffa		1



**Decals, Autocollant,
Rótulo, Decalque**

1	161/99547 Decal Autocollant Rótulo Decalque RPC 60/80 1
2	161/99547 Decal Autocollant Rótulo Decalque RPC 60/80 1
3	161.0.293 Decal - Control Autocollant - Controler Rótulo - Control Decalque - Controle 1
4	800/99782 Decal - Noise Autocollant - Bruits Rótulo - Ruidos Decalque - Ruído 109dB(A) 1
5	161.0.293 Decal - Warning Autocollant - Avertissement Rótulo - Aviso Decalque - Aviso 1
6	161.0.293 Decal - Throttle Autocollant - Accélérateur Rótulo - Acelerador Decalque - Estrangulador Non EPA Only 1
6	800/99506 Decal - Throttle Autocollant - Accélérateur Rótulo - Acelerador Decalque - Estrangulador EPA Only 1
7	161.0.293 Decal Autocollant Rótulo Decalque 1



Label, Abziehbild, Skilt, Decalomanie

1	161.0.429	Label	Abziehbild	Skilt	Decalomania	RPC 60/80	1
2	161.0.429	Label	Abziehbild	Skilt	Decalomania	RPC 60/80	1
3	161.0.293	Label - Heerschappij	Abziehbild - Bowden	Skilt - Regere	Decalomania - Controlle		1
4	800/99782	Label - Gultuid	Abziehbild - Geräuschpegelschild	Skilt - Skilt Støj	Decalomania - Sulla rumorosità	109dB(A)	1
5	161.0.293	Label - Waarschuwing	Abziehbild - Warning	Skilt - Advarsel	Decalomania - Avvertenza		1
6	161.0.293	Label - Gashendel	Abziehbild - Drossel	Skilt - Gashåndtags	Decalomania - Acceleratore	Non EPA Only	1
6	800/99506	Label - Gashendel	Abziehbild - Drossel	Skilt - Gashåndtags	Decalomania - Acceleratore	EPA Only	1
7	161.0.429	Label	Abziehbild	Skilt	Decalomania		1