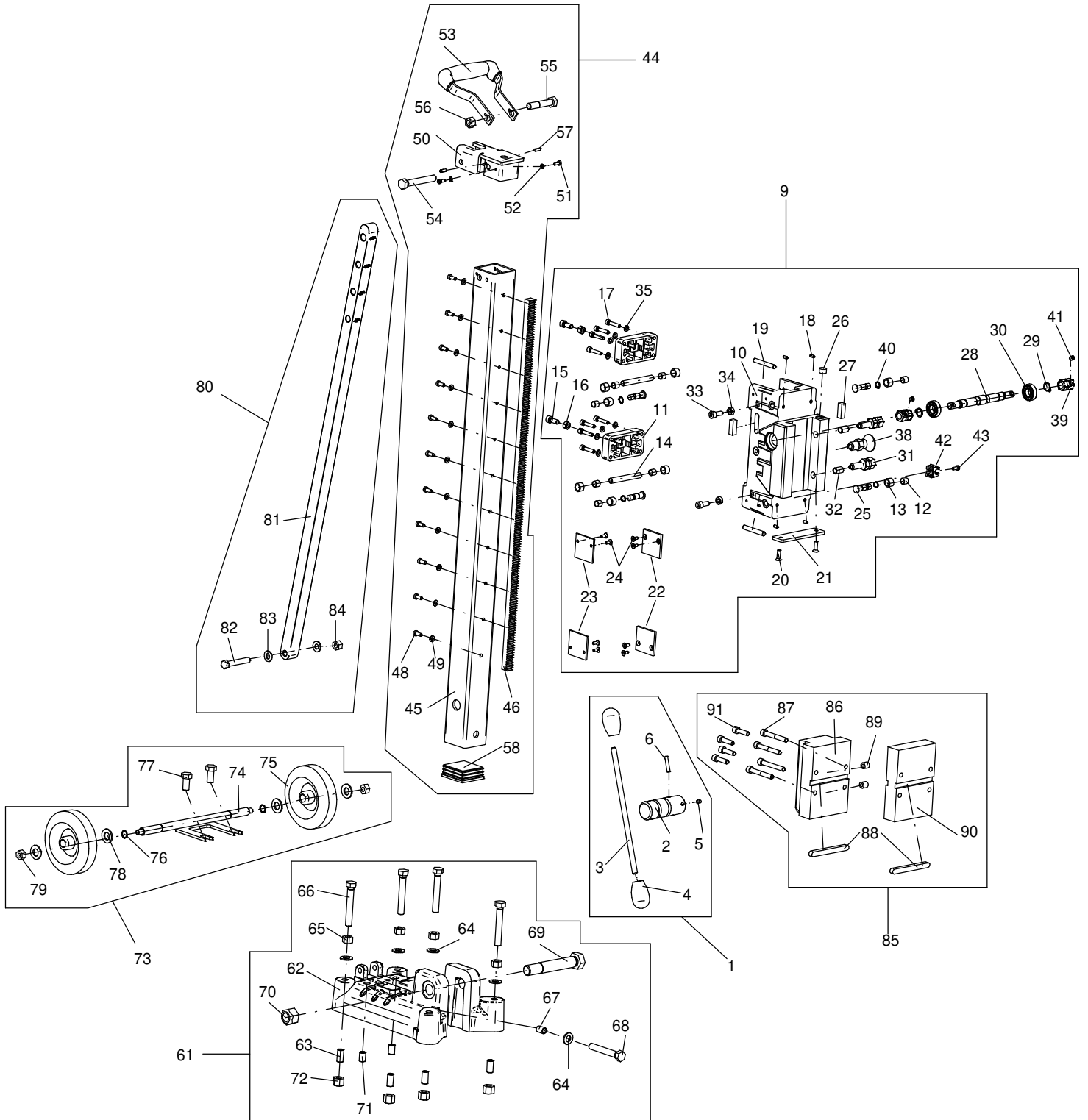




Bohrständer  
PLB 450





| Pos. | Description                   | Item No. | pc. |
|------|-------------------------------|----------|-----|
| 1    | Turnstile compl.              | 796T0001 | 1   |
| 2    | Turnstile                     | 796UN361 | 1   |
| 3    | Lever                         | 796UN746 | 1   |
| 4    | Knob                          | 80201254 | 2   |
| 5    | Spring loaded thrust piece    | 85000157 | 1   |
| 6    | Parallel pin 6x32             | 80200624 | 1   |
| 9    | Machine holder compl.         | 79600605 | 1   |
| 10   | Machine holder                | 796UN605 | 1   |
| 11   | Bow                           | 796UN620 | 2   |
| 12   | Bearing                       | 80420242 | 8   |
| 13   | Bushing                       | 796UN622 | 8   |
| 14   | Parallel pin 10x50            | 796UN627 | 2   |
| 15   | Screw M8x20                   | 80201147 | 2   |
| 16   | Nut M8                        | 80201006 | 2   |
| 17   | Screw M6x35                   | 80201136 | 8   |
| 18   | Threaded pin M5x10            | 80200783 | 4   |
| 19   | Parallel pin 8x55             | 80200631 | 2   |
| 20   | Screw M6x20                   | 80201158 | 2   |
| 21   | Bracket                       | 796UN915 | 1   |
| 22   | Pad 2 4mm                     | 796UN629 | 2   |
| 23   | Pad 1 3mm                     | 796UN628 | 2   |
| 24   | Screw M5x12                   | 80201226 | 8   |
| 25   | Bolt                          | 796UN623 | 4   |
| 26   | Circular level                | 85000153 | 1   |
| 27   | Horizontal bubble level       | 85000152 | 2   |
| 28   | Pinion shaft                  | 796UN588 | 1   |
| 29   | Retaining ring 15x1           | 80201322 | 2   |
| 30   | Grooved ball bearing 6002 2RS | 80410037 | 2   |
| 31   | Locking device                | 796UN587 | 2   |
| 32   | Thread insert M12x18          | 85000177 | 2   |
| 33   | Screw M8x20                   | 80201147 | 2   |
| 34   | Nut M8                        | 80201006 | 2   |
| 35   | Spring lock washer 6          | 80201303 | 8   |
| 38   | Lock pin M16                  | 85000179 | 1   |
| 39   | Bush SW 19                    | 796UN586 | 2   |
| 40   | Circlip SW11                  | 80200738 | 4   |
| 41   | Threaded pin M8x8             | 80201427 | 2   |
| 42   | Clamp                         | 80600178 | 1   |
| 43   | Screw M5x12                   | 80201230 | 1   |
| 44   | Column compl.                 | 79600696 | 1   |

| Pos. | Description           | Item No. | pc. |
|------|-----------------------|----------|-----|
| 45   | Column                | 796UN696 | 1   |
| 46   | Gear rack             | 796UN698 | 1   |
| 48   | Screw M6x14           | 80201428 | 11  |
| 49   | Spring lock washer 6  | 80201300 | 11  |
| 50   | Cover                 | 796UN612 | 1   |
| 51   | Screw M5x12           | 80201230 | 2   |
| 52   | Spring lock washer 5  | 80201302 | 2   |
| 53   | Handle                | 796UN607 | 1   |
| 54   | Screw M12x60          | 40600011 | 1   |
| 55   | Screw M12x80          | 80201118 | 1   |
| 56   | Nut M12               | 80201036 | 2   |
| 57   | Grooved pin 5x14      | 80200569 | 2   |
| 58   | Conductor 60x60x5     | 80899995 | 1   |
| 61   | Base compl.           | 79600578 | 1   |
| 62   | Base                  | 796UN578 | 1   |
| 63   | Thread insert M12x24  | 85000163 | 4   |
| 64   | Washer 13             | 80201381 | 4   |
| 65   | Nut M12               | 80201014 | 4   |
| 66   | Screw M12x80          | 80201118 | 4   |
| 67   | Thread insert M12x18  | 85000177 | 1   |
| 68   | Screw M12x80          | 80201118 | 1   |
| 69   | Screw M20x130         | 40600117 | 1   |
| 70   | Nut M20               | 80201017 | 1   |
| 71   | Thread insert M12x18  | 85000177 | 2   |
| 72   | Nut M12               | 80201013 | 4   |
| 73   | Wheel axle, compl.    | 79600666 | 1   |
| 74   | Wheel axle            | 796UN666 | 1   |
| 75   | Solid rubber wheel    | 40600005 | 2   |
| 76   | Retaining ring 14x1   | 80201318 | 2   |
| 77   | Screw M12x25          | 40600014 | 2   |
| 78   | Washer 15             | 80201352 | 4   |
| 79   | Nut M10               | 80201034 | 2   |
| 80   | Brace support compl.  | 79600570 | 1   |
| 81   | Supporting bracer     | 796UN598 | 1   |
| 82   | Screw M10x60          | 80201223 | 1   |
| 83   | Washer 10,5           | 80201380 | 2   |
| 84   | Nut M10               | 80201034 | 1   |
| 85   | Adapter plate, compl. | 79600945 | 1   |
| 86   | Adapter plate         | 796UN945 | 1   |
| 87   | Screw M8x60           | 40600006 | 4   |



0962M000

PLB 450 - V

Version: 01

Dated: 26.06.2023

| Pos. | Description           | Item No. | pc. |
|------|-----------------------|----------|-----|
| 88   | Parallel key 10x8x100 | 80200613 | 2   |
| 89   | Drill bushing         | 80201051 | 2   |
| 90   | Spacer plate          | 796UN939 | 1   |
| 91   | Screw M8x30           | 80201143 | 4   |

| Pos. | Description | Item No. | pc. |
|------|-------------|----------|-----|
|------|-------------|----------|-----|