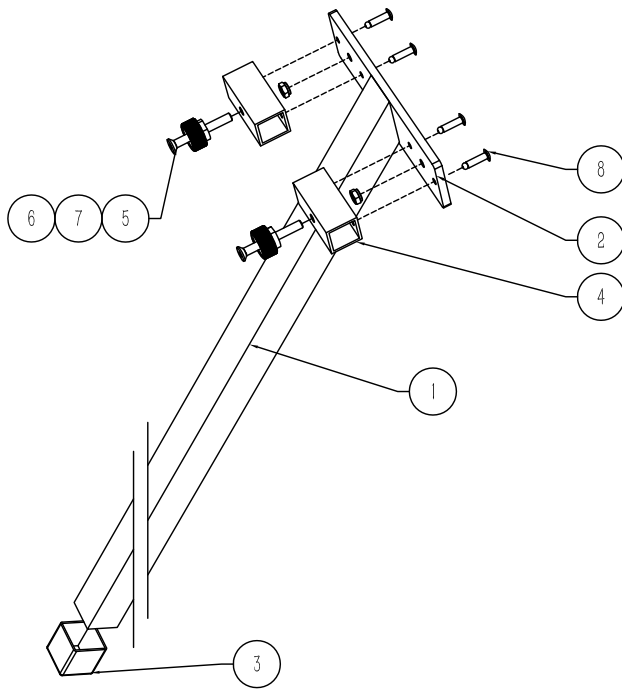
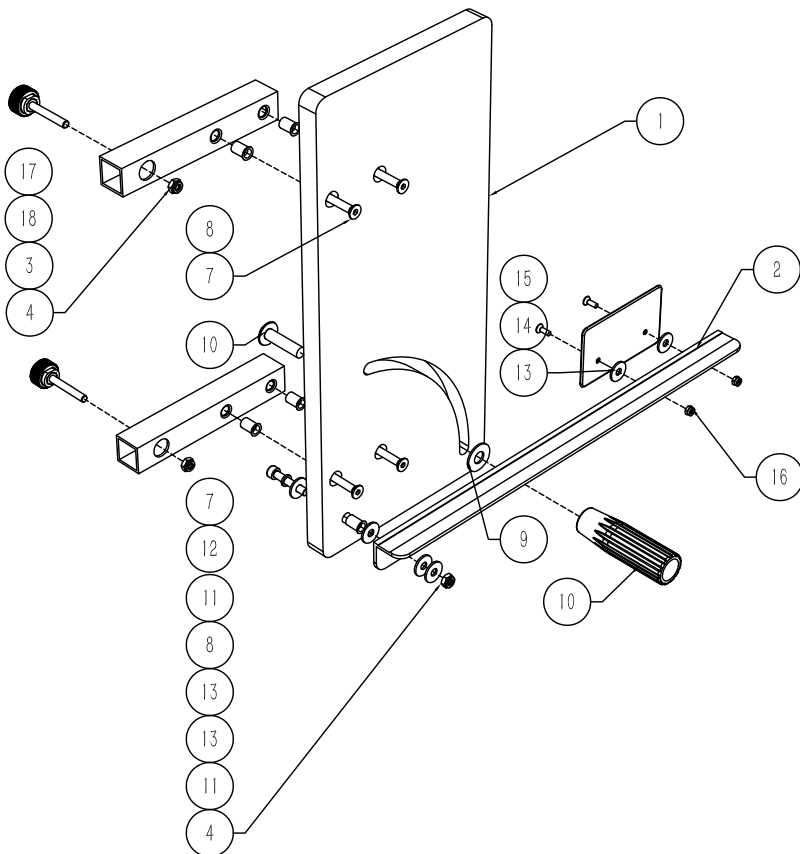


NO.	Description	QTY	NO.	Description	QTY
1	bottom base plate for bow	1	41	top wood board	1
2	top base plate for bow	1	42	Narrow rivet nuts 6x9x15	31
3	bottom holder for bow	1	43	Machine screws m6 x 25	4
4	top holder for bow	1	44	eccenter out of plastic	1
5	Longitudinal square tube	1	45	metal washer 6x12x1.5	1
6	Square tube top	1	46	Flat head bolt M6 x 20	1
7	Square tube bottom	1	47	Flat cup bolt M6 x 35	1
8	Limit angle aluminum	2	48	ruler	1
9	Wide-edge rivet nuts 9x6x15.5	19	49	metal construction with plastic caps	1
10	metal washer 6x18x1.5	15	50	metal construction with plastic tread	1
11	allen screw M6 x 12	4	51	Blind rivet 3.2 x 9	3
12	square nut M6	2	52	Square pipe plug 30 x 30	2
13	switch	1	53	knurled screw plastic M6x30	1
14	Buckle cork12	2	54	Plate	1
15	Integrated plug 30x30	2	55	Cross recessed countersunk screw M4 x 12	2
16	spring protecting sleeve 14*30	2	56	Locknut M4	2
17	nut M4	4	57	Flat cup screw M6 x 30	24
18	Machine self tapping screw M3.5 x 13	2	58	Middle aluminum tube	2
19	female plug of transformer	1	59	Middle board	4
20	pad of transformer	1	60	Flat cup screw M6 x 50	8
21	Flat machine self tapping screw M2.9x13	2	61	front leg	2
22	plastic washer 6x18x1.5	12	62	25tube overcoat	2
23	slef-retaining nut M6	19	63	M10x40 Hexagon flat round head with padded screws	1
24	Flat cup screw M6 x 25	2	64	Frame Holder	1
25	137 hot wire	1	65	Flat cup screw M6 x 40	2
26	knurled nut M6, plastic	4	66	aluminium tube of Frame Holder	1
27	plastic nut	13	67	allen screw M6 x 80	2
28	Rivet screws M6*35	2	68	metal washer 10x25x1.5	2
29	Rivet screws M6*20	2	69	230V 180W transformer (Inc female plug)	1
30	slide 33cm	2	70	Narrow rivet nuts M6 x 12	1
31	spring 13x30x1.5	2	71	Vertical handle screw M10 x 86 x 25	1
32	allen screw M4 x 8	2			
33	Flat tail self-tapping screws ST3.5 x 12	2			
34	Pan head screws with cross recess M4 x 6	2			
35	Pan head screws with cross recess M4 x 10	2			
36	Double drum rivet 4.8*11	7			
37	Receding spring	2			
38	metal washer 4x9x0.8	2			
39	Motherboard	1			
40	bottom wood board	1			



NO.	Description	QTY
1	Rear support tube	1
2	Rear support plate	1
3	Tube jacket 30x30	1
4	Rear support short tube	2
5	Hexagonal locknut M6	2
6	Flat cup screw M6X50	2
7	Plastic nut (1.5 knurled)	2
8	Double drum rivet 4.8*16	4
9	Narrow side rivet nut M6X13.5	1



NO.	Description	QTY
1	Right attached board	1
2	Right attached ruler	1
3	Right attached square tube	2
4	Hexagonal locknut M6	3
5	Vertical nylon handle M10	1
6	Flat cup screw M6X30	4
7	Hexagon socket head cap screw M6 x 35	1
8	Narrow side rivet nut M6X13.5	5
9	Flat pad 10 x 25X1.5	1
10	M10X40 Hexagon Flat Round Head with Pad Screw	1
11	Flat pad 6x18x1.5	2
12	Spring pad 6X10X1.5	1
13	Nylon flat pad 6x18x1.5	4
14	Plastic backing	1
15	Cross recessed countersunk head screw M4 x 12	2
16	Lock nut M4	2
17	Plastic nut (1.5 knurled)	2
18	Flat cup screw M6X50	2