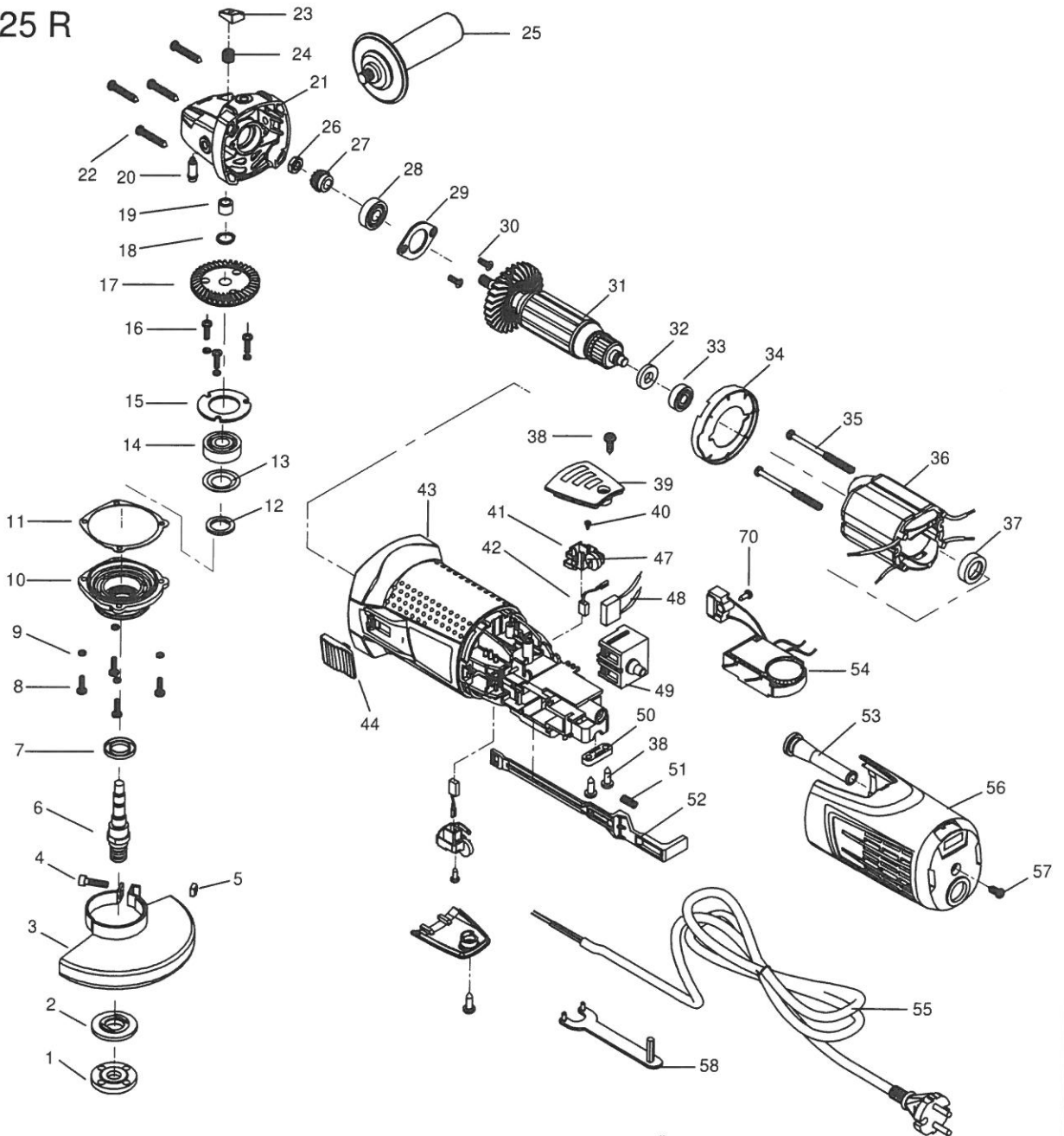




# Ersatzteilliste

## EZW 125 R





06801000

EZW 125 R - 230V

Version

01

Dated: 06.07.2023

Pos.	Description	Item No.	pc.
1	Clamp nut	66534001	1
2	Guide washer	66534002	1
3	Protection hood	80300299	1
4	Screw M6x25	80201125	1
5	Nut M6	80201012	1
6	Work spindle	66534006	1
7	Dust protection	66534007	1
8	Screw M4x12	80201180	4
9	Spring lock washer 4	80201301	4
10	Gearbox cover	66534010	1
11	Gearbox seal	66534011	1
12	Felt ring 16,8x24x2	66534012	1
13	Disc	66534013	1
14	Grooved ball bearing 6201 2RS	80410100	1
15	Bearing cover	66534015	1
16	Screw M4x10	80201201	3
17	Wheel	66534017	1
18	Retaining ring 10x1	80201305	1
19	Needle sleeve HK0810	80420110	1
20	Spindle lock	66534020	1
21	Gearbox housing	66534021	1
22	Screw 3,9x32	66534022	4
23	Locking knob	66534023	1
24	Spring	66534024	1
25	Support handle	80900235	1
26	Nut M8	80201006	1
27	Pinion	66534027	1
28	Grooved ball bearing 6000 2RSL C3	80410029	1
29	Bearing cover	66534029	1
30	Screw M5x10	80201094	2
31	Rotor, compl. 230V	66534031	1
32	Magnet	66534032	1
33	Grooved ball bearing 608 2RSL C3	80410026	1
34	Air guiding washer	66534034	1
35	Screw 3,9x74	66811029	2
36	Stator, compl. 230V	66534036	1
37	Bearing cap	66534037	1
38	Screw 3,9x13	80201261	4
39	Brush holder cover	66534039	2
40	Screw 2,9x6,5	80201142	2

Pos.	Description	Item No.	pc.
41	Brush holder, compl.	66534041	2
42	Carbon brush 6x11x14	66534042	2
43	Motor housing	66534043	1
44	Switch knob	66534044	1
47	Spring	66534047	2
48	Capacitor	66534048	1
49	Switch	80600502	1
50	Wire locking flange	66534050	1
51	Spring	66534051	1
52	Slider	66534052	1
53	Cable grommet	66534053	1
54	Electronic 230V	6662H054	1
55	Connecting cable 2x1mm <sup>2</sup> 3m	80600470	1
56	Cover	6662H056	1
57	Screw 3,9x16	80201115	1
58	Face spanner	66534058	1
70	Screw 2,9x9,5	80201251	1