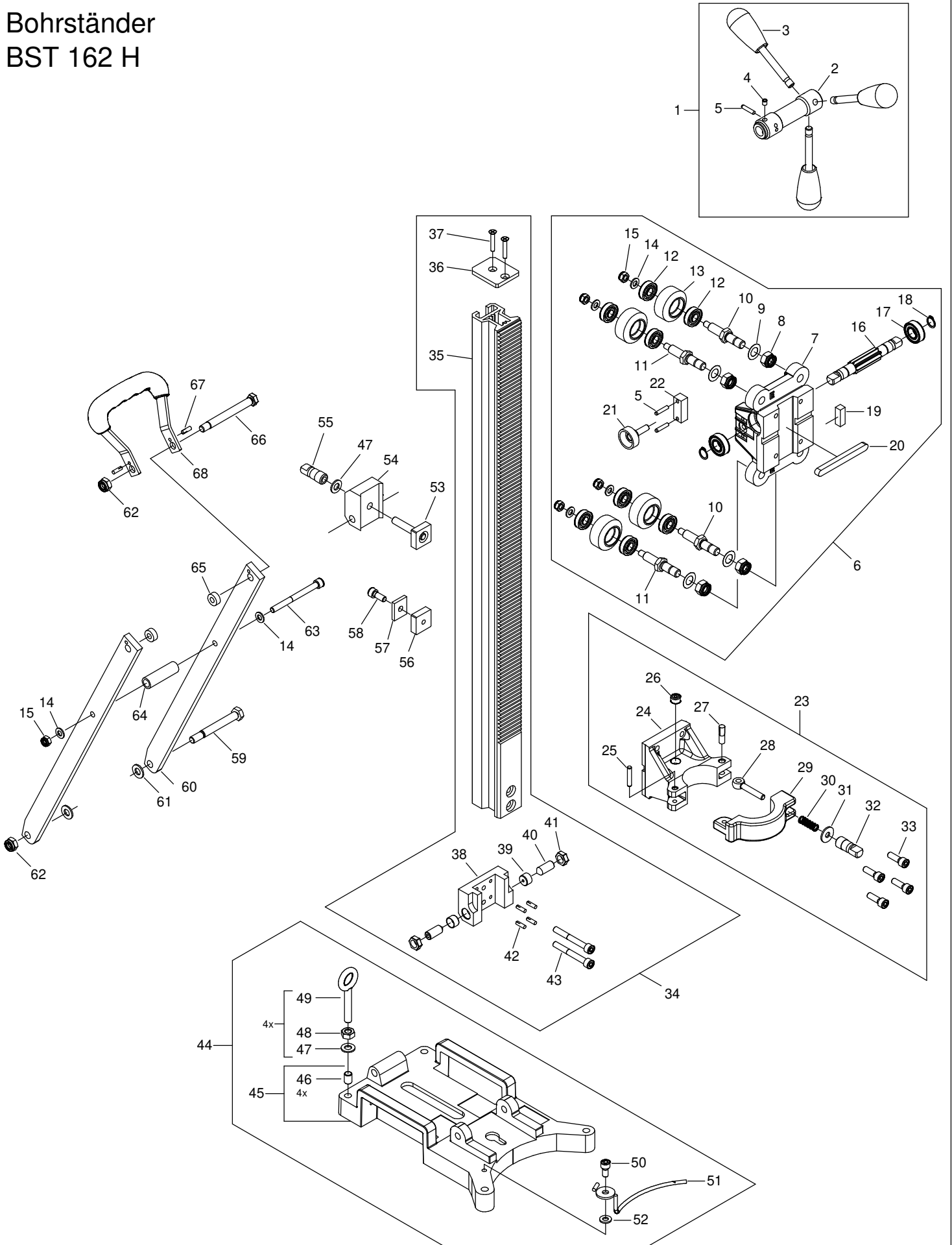




Bohrständer
BST 162 H





0963W000

BST 162 H - V

Version: 01

Dated: 19.12.2022

Pos.	Description	Item No.	pc.
1	Turnstile, compl.	7963W670	1
2	Turnstile	796UN504	1
3	Lever, compl.	79600748	3
4	Spring loaded thrust piece	85000157	1
5	Parallel pin 5x24	80200588	3
6	Machine holder, compl.	7963W79U	1
7	Machine holder	7963W790	1
8	Nut M12	80201036	4
9	Shim ring 12x18x0,2	80200502	4
10	Bolt	796R3730	2
11	Eccentric	796R3765	2
12	Grooved ball bearing 6001 2RS	80410036	8
13	Roller	796R1763	4
14	Washer 8,4	80201377	6
15	Nut M8	80201221	5
16	Pinion shaft	796UN505	1
17	Grooved ball bearing 6002 2RS	80410037	2
18	Retaining ring 14x1	80201318	2
19	Horizontal bubble level	85000152	1
20	Parallel key 10x8x100	80200613	1
21	Knurled screw M8x25	85000158	1
22	Brake block	796R1906	1
23	Adapter, compl.	7963W78U	1
24	Adaptor	7963W780	1
25	Parallel pin 6x32	80200624	1
26	Circular level	85000153	1
27	Grooved pin 8x30	80200621	2
28	Eye bolt M8x50	80201112	1
29	Bow	7963W785	1
30	Compression spring	85000192	1
31	Washer 8,4	80201391	1
32	Locking device short M8	7963W770	1
33	Screw M8x30	80201143	4
34	Column, compl.	7963W80U	1
35	Column 850mm	7963W800	1
36	Column cap	796UN916	1
37	Screw M6x30	80201148	2
38	Support bracket	796R1850	1
39	Conical insert	796R1855	2
40	Threaded pin M12x30	80200762	2

Pos.	Description	Item No.	pc.
41	Nut M12	80201037	2
42	Grooved pin 5x16	80200573	4
43	Screw M8x65	80201114	2
44	Base, compl.	7963W81U	1
45	Base	7963W810	1
46	Thread insert M10x20	85000181	4
47	Washer 10,5	80201380	5
48	Nut M10	80201033	4
49	Ring screw M10x60	80201236	4
50	Screw M8x16	80201160	1
51	Centring pointer	796UN224	1
52	Washer 8,4 PA6	80201383	1
53	Square M10x60	796UN517	1
54	Supporting holder	796UN521	1
55	Locking device	796UN536	1
56	Square M8	79623755	1
57	Support plate	796UN927	1
58	Screw M8x20	80201147	1
59	Screw M10x90	80201613	1
60	Supporting bracer	7963W820	2
61	Washer 10,5 PA6	80201384	2
62	Nut M10	80201034	2
63	Screw M8x90	80201255	1
64	Handle tube	796UN518	1
65	Spacer sleeve	80200633	2
66	Screw M10x100	80201612	1
67	Grooved pin 5x14	80200569	2
68	Handle	796UN543	1