

Minidumper KMD 500 & KMD 500D

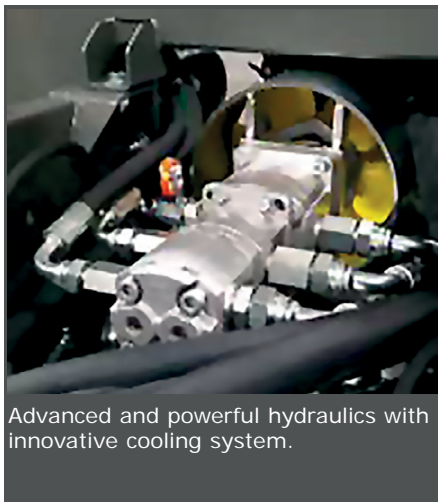
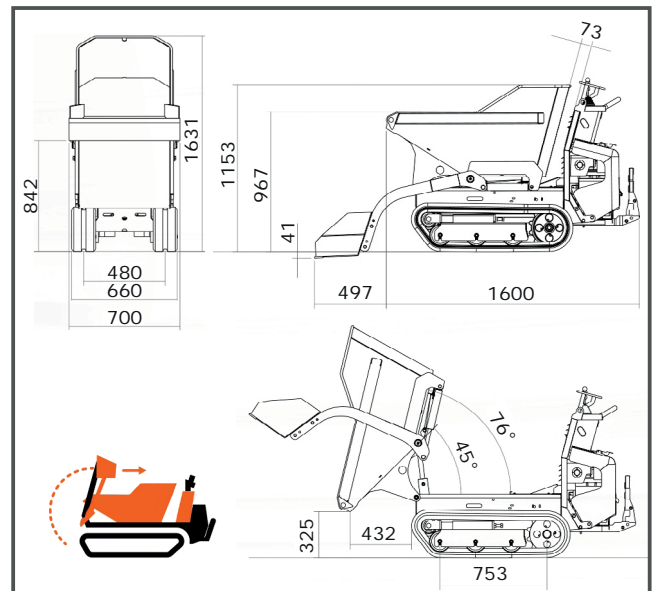
- flexible Minidumper with rubber tracked chassis, Honda petrol - (KMD 500) or Yanmar diesel engine (KMD 500D) as well as hydrostatic drive
- hydraulic control with three gear pumps and orbital motors
- easy steering by independent rotation of the tracks
- powerful hydraulics with innovative cooling system
- two travel speeds
- with hydraulically operated loading shovel & tipping tray
(further variants available on request)



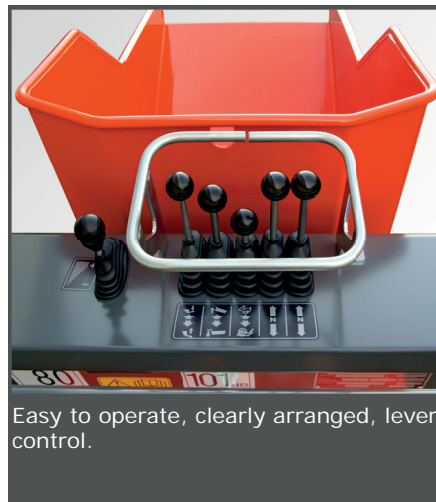
KMD 500 & KMD 500D

Equipment:

- with powerful Honda petrol engine *or* Yanmar diesel engine as well as hydrostatic drive
- easy, hydraulic control with three gear pumps and orbital motors
- easy to operate lever control
- hydraulically operated loading shovel & tipping tray
- narrow & sturdy rubber tracked chassis
- two travel speeds
- powerful hydraulics with innovative cooling system
- further variants available on request:



Advanced and powerful hydraulics with innovative cooling system.



Easy to operate, clearly arranged, lever control.



Compact design, ideal for working on constricted spaces. With hydraulically operated loading shovel and tipping tray.

Minidumper	KMD 500	KMD 500D	Logistic Data
Petrol- / Diesel engine (4-stroke / air cooled)	Honda GX200	Yanmar L70N6	REF 319300
Displacement (1 Cylinder)	196 cm ³	320 cm ³	1600 x 700 x 1631 mm + EP
Power max.	4.8 kW / 6.5 PS	4.9 kW / 6.6 PS	[PU 1] 505 kg + EP
Hydraulic system	3 gear pumps		4 260 182 072 868
Total flow-through	2x 12.5 litres/min (190 bar)		
	1x 14 l/min (135 bar)	1x 19 l/min (135 bar)	
Payload max.	500 kg		
Tray capacity (flat / heaped)	260 / 300 litres		
Loading height max. (Shovel)	1631 mm		REF 319301
Ground pressure (empty / loaded)	0.118 / 0.254 kg/cm ²	0.151 / 0.240 kg/cm ²	1600 x 700 x 1631 mm + EP
Track chain (material / width)	Rubber with iron wire core / 180 mm		[PU 1] 550 kg + EP
2 travel speeds max.	1.8 / 3.9 km/h	1.6 / 5.2 km/h	4 260 182 072 875
Gradient max. (loaded)	30°		
Tank capacity (Fuel / Hydraulic oil)	3.6 / 18 litres	3.3 / 18 litres	
Level control and lifting eyes	✓		
Powerful hydraulics with innovative cooling system	✓		
Hydraulically operated loading shovel and tipping tray	✓		
Weight approx.	505 kg	550 kg	
Order-no.	319300	319301	



ALTRAD LESCHA ATIKA GMBH
 Josef-Drexler-Str. 8 - 89331 Burgau - Germany
 Tel.: +49 (0) 82 22 / 4130-0 - Fax: +49 (0) 82 22 / 4130-24 - E-mail: info@lescha-atika.de
www.lescha-atika.de