

HYSTREAM 3400



EN

OPERATING MANUAL
HOT AIR BLOWER

 **TROTEC**

Table of contents

Notes regarding the operating manual	B - 1
Safety	B - 1
Operation	B - 3
Transport	B - 4
Errors and faults	B - 4
Maintenance	B - 4
Repair	B - 5
Technical data	B - 5
Optional accessories	B - 5
Disposal	B - 6

Notes regarding the operating manual

Symbols



Hazardous electric voltage!

Warns about a hazard from electrical voltage which can lead to injuries or even death.



Hazard from hot surfaces!

Warns of a hazard resulting from hot surfaces which can lead to injuries.



Danger!

Warns of a hazard which can lead to injuries.

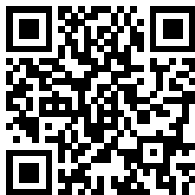


Caution!

Warns of a hazard which can lead to property damage.

The current version of the operating manual can be found at:

www.trotec.de



<http://hub.trotec.com/?id=26899>

Legal notice

This release replaces all previous versions. No part of this publication may be reproduced without written permission from Trotec. The same applies for electronically processing, duplicating or spreading the publication. Subject to technical changes. All rights reserved. Trademarks are used without guarantee that they may be used freely and primarily following the spelling of the manufacturer. Product names are registered.

Changes to construction in the interests of constant improvements to the product, as well as changes to the shape and colour are reserved. The scope of delivery may vary from product images. This document was created with all due care. Trotec accepts no liability whatsoever for possible mistakes or omissions. © Trotec

Safety

Carefully read the operating manual before using the device and keep it within reach!



Danger!

The device becomes very hot! Improper use of the hot air blower can result in injuries due to burns and in an imminent fire hazard!



- Do not use the device in rooms exposed to explosion hazards where fuel, solvents, varnishes or other easily inflammable vapours are stored nor in atmospheres containing oil, sulphur, chlorine or salt.
- Do not use the device in humid, wet or muddy surroundings.
- Ensure a minimum distance of 50 cm to combustible substances. Do not use the device in immediate proximity to curtains.
- Do not use the device on combustible ground or near inflammable objects.
- Make sure that air inlet and nozzle are not obstructed.
- Only connect the device to the mains if voltage and frequency correspond to the values given on the nameplate.
- Keep a sufficient distance to animals, especially small animals, e.g. aviaries.

- Keep away children. People who use this device must be aware of the dangers that occur when working with a hot air blower.
- Never reach or put objects into the device.
- Never cover the device during operation, for it becomes very hot!
- **Never point the activated device at people, animals, plants or combustible objects or liquids.**
- Never leave the activated device unattended.
- Ensure that all electric cables outside of the device are protected from damage (e.g. caused by animals).
- Observe the device's power input, cable length and intended use when selecting extensions to the connecting cable. Avoid electrical overload. Extension cables must always be reeled off completely.
- Pull the plug from the socket if the device is not in use for extended periods of time.
- Allow the device to cool down completely before transporting it.

Intended use

The device was developed for the purpose of generating hot air and may only be used whilst adhering to the technical data.

The hot air blower HyStream 3400 was designed for the following fields of application:

- for hot air applications combined with a tile lifting system such as the TilexPro from Trotec
- to remove flooring
- to shrink foils and shrinking hoses
- to dry incombustible paints and varnishes, damp objects or grounds
- to remove incombustible paints and varnishes
- to bend and heat-seal plastics
- for sealing work e.g. roofs, plastic foil, tents, tarpaulin and the like
- for melting and thawing incombustible parts

Every application going beyond these terms of use is prohibited!

Improper use

Only use the device as intended, never in the immediate vicinity of combustible objects and not to set fire.

Residual risks



Hazard from hot surfaces!
Parts of the device, especially at the nozzle, become very hot during operation. There is a danger of burning and fire.



Danger!
Parts of this appliance can become very hot and cause burns. Particular attention is to be paid when there are children or vulnerable persons present!



Danger!
Improper handling entails a risk of burning. Only use the device as intended!



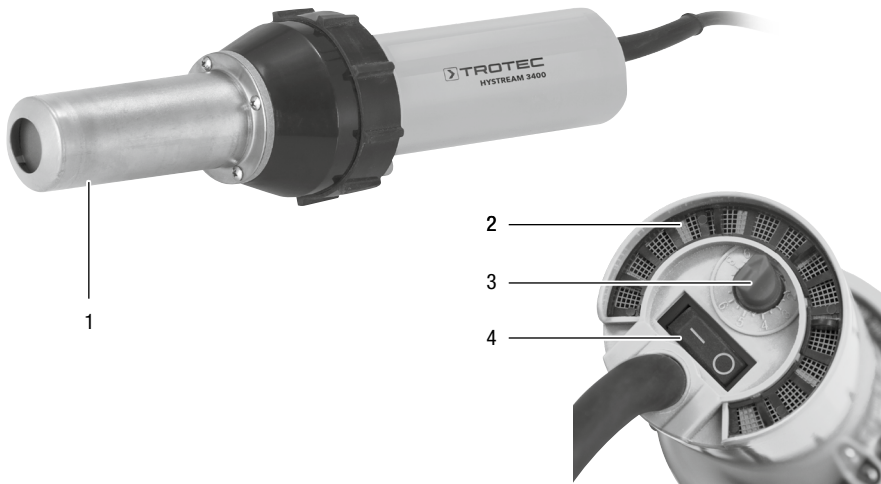
Danger!
The device must not be covered, there is an imminent fire hazard!



Hazardous electric voltage!
Work on the electrical components must only be carried out by an authorised specialist company!

Behaviour in the event of an emergency

1. In case of an emergency, immediately switch the device off using the ON/OFF switch.
2. Remove the mains plug from the mains socket. Do not reconnect a defective device to the mains.



No.	Designation
(1)	Nozzle
(2)	Venting slots
(3)	temperature setting +/- °C [1-9]
(4)	ON/OFF switch [0/1]

Operation

- The device was designed for many application areas, plan yours carefully and prepare a corresponding work space with sufficient distance to combustible materials.
- The device must be connected to a properly secured mains power socket.



Start-up

1. Set the device via the temperature setting (3) to the lowest level [1].
2. Then use the ON/OFF switch (4) to switch the device on.
3. Select the desired temperature range via the temperature setting (3): the temperature can be steplessly adjusted between 20 °C and 650 °C.
4. Only hold the device in one hand or place it on the working surface. Make sure that the hot air blower cannot be pulled down by the power cable.
5. Always start out at a low temperature and then slowly adjust it to your operating range.

6. Further information regarding the use of the HyStream 3400 with tile lifting system TilexPro 30 or TilexPro 50 can be gathered from the operating manual of the TilexPro.
7. This professional tool is equipped with a highly efficient ceramic heating element. Handle the device carefully. **Do not drop it. Always put it safely aside after use.**

Switching the device off

1. Turn the temperature setting (3) to minimum [1]. Allow the device to cool down in the air flow.
2. Then use the ON/OFF switch to switch the device off. Wait for the end of the brief rundown period, then pull the mains plug from the socket.
3. Before performing any further activities, e.g. storage or transport, wait until the device has cooled down completely.

Transport

Before transporting the device, proceed as follows:

- Switch the device off.
- Remove the mains plug from the mains socket. Do not use the power cable to drag the device!
- Wait until the device has cooled down completely.

Errors and faults

The device has been checked for proper functioning several times during production. If malfunctions occur nonetheless, check the device according to the following list.



Troubleshooting tasks which require the housing to be opened must only be carried out by a specialist dealer or by Trotec.

Slight smoke or odour are emitted during first use:

- This is not a fault. These phenomena disappear after a brief runtime.

The device does not start:

- Check the power connection (230 V/1~/50 Hz).
- Check the mains plug for damages.
- Have an electrical inspection carried out by Trotec.

The device supplies cold air only:

- The ceramic heating element or the temperature control might be damaged.
- Please contact the Trotec customer service.

Your device still does not operate correctly after these checks?

- In case of unusual sounds, sparking or motor problems, switch the device off and put it down carefully.
- Please contact the Trotec customer service.

Maintenance

Activities required before starting maintenance:

- Do not touch the mains plug with wet or damp hands.
- Allow the device to cool down completely before performing any maintenance work!
- Always remove the mains plug before any maintenance work!



Maintenance tasks which require the housing to be opened must only be carried out upon consultation with Trotec.



Cleaning the housing:



Hazard from hot surfaces!
Burn hazard! Allow the device to cool down completely before cleaning the housing!

Clean the device with a soft, damp and lint-free cloth. Make sure that no moisture enters the housing. Do not use sprays, solvents, harsh or abrasive cleaners to dampen the cloth.

Repair

Replacing the ceramic heating element (qualified persons only)

- Remove the mains plug from the mains socket.
- Put the cooled-off device on a working surface.
- Use a Phillips screwdriver to loosen the nozzle's 4 screws (1), then carefully pull it off towards the front.
- Carefully hold the ceramic element directly by the white rim and remove it from the plug connection by pulling and shaking it gently.
- Observe the fits before inserting the new heating element: the notches and cut-outs must be compatible.
- Push the new heating element firmly into the plug connection until the white rim is seated flush within the device.
- Fasten the nozzle back in place.
- Switch the device back on – starting at the lowest temperature level.



Technical data

Nominal capacity	3400 W
Mains connection with protective insulation	1/N ~ 230 V yes <input type="checkbox"/>
Power frequency	50 Hz
Shaped plug	CEE 7/17
Cable length	2.90 m
Air temperature	20 °C – 650 °C
Air flow rate	320 l/min
Air pressure	3000 Pa
Noise level	65 dB (A)

Optional accessories

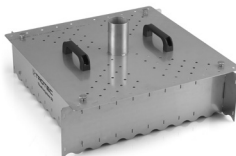
TilexPro system 30

for tile formats sized up to 30 cm
art. no. 6.100.000.050



TilexPro system 50

for tile formats sized up to 50 cm
art. no. 6.100.000.052



Disposal



Always dispose of packing materials in an environmentally friendly manner and in accordance with the applicable local disposal regulations.

The icon with the crossed-out waste bin on waste electrical or electronic equipment is taken from Directive 2012/19/EU. It states that this device must not be disposed of with the household waste at the end of its life. You will find collection points for free return of waste electrical and electronic equipment in your vicinity. The addresses can be obtained from your municipality or local administration. You can also find out about other return options that apply for many EU countries on the website <https://hub.trotec.com/?id=45090>.

Otherwise, please contact an official recycling centre for electronic and electrical equipment authorised for your country. The separate collection of waste electrical and electronic equipment aims to enable the re-use, recycling and other forms of recovery of waste equipment as well as to prevent negative effects for the environment and human health caused by the disposal of hazardous substances potentially contained in the equipment.

Only for United Kingdom

According to Waste Electrical and Electronic Equipment Regulations 2013 (SI 2013/3113) (as amended) devices that are no longer usable must be collected separately and disposed of in an environmentally friendly manner.

Trotec GmbH

Grebbener Str. 7
D-52525 Heinsberg

☎ +49 2452 962-400

☎ +49 2452 962-200

✉ info@trotec.com

www.trotec.com