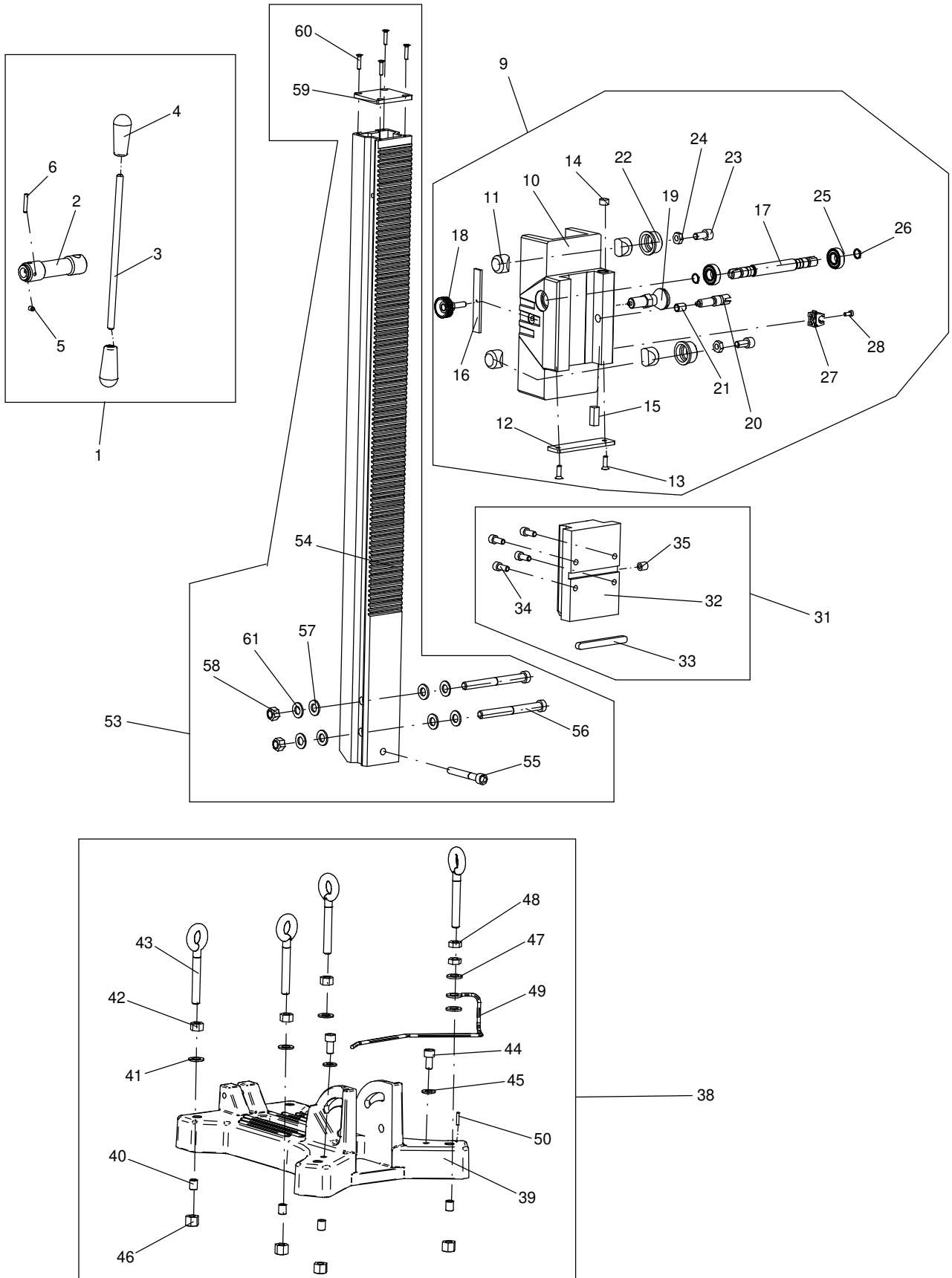




Bohrständer BST 250





09631000

BST 250 - V

Version

01

Dated: 07.07.2023

Pos.	Description	Item No.	pc.
1	Turnstile, compl.	15200100	1
2	Turnstile	796UN740	1
3	Lever	796UN746	1
4	Knob	40600061	2
5	Spring loaded thrust piece	85000157	1
6	Parallel pin 5x30	80200627	1
9	Machine holder, compl.	79600781	1
10	Machine holder	796UN781	1
11	Thrust piece	796UN763	4
12	Bracket	796UN915	1
13	Screw M6x20	80201158	2
14	Circular level	85000153	1
15	Horizontal bubble level	85000152	1
16	Flat clamp	796UN778	1
17	Pinion shaft	7300W730	1
18	Knurled screw M8x30	85000189	1
19	Locking bolt M16	85000191	1
20	Locking device	796UN735	1
21	Thread insert M12x18	85000177	1
22	Fitting	796DE766	2
23	Screw M10x18	80201453	2
24	Nut M10	80201039	2
25	Grooved ball bearing 6002 2RS	80410037	2
26	Retaining ring 14x1	80201318	2
27	Clamp	80600178	1
28	Screw M5x12	80201230	1
31	Adapter plate, compl.	79600911	1
32	Adapter plate	796UN911	1
33	Parallel key 10x8x100	80200613	1
34	Screw M8x25	80201145	4
35	Drill bushing	80201051	1
38	Base, compl.	79600860	1
39	Base	796UN860	1
40	Thread insert M12x24	85000163	4
41	Washer 13	80201381	3
42	Nut M12	80201014	3
43	Ring screw M12x85	80201144	4
44	Screw M10x20	80201146	2
45	Washer 10,5	80201380	2
46	Nut M12	80201013	4

Pos.	Description	Item No.	pc.
47	Washer 13 PA6	80201388	2
48	Nut M12	80201037	2
49	Centring display	796UN855	1
50	Parallel pin 4x20	80200622	1
53	Column, compl.	79600951	1
54	Column	796UN950	1
55	Screw M10x75	80201139	1
56	Screw M12x120	80201176	2
57	Washer 13 PA6	80201388	4
58	Nut M12	80201036	2
59	Column cover	796UN920	1
60	Screw M5x20	80201168	4
61	Washer 13	80201381	4